

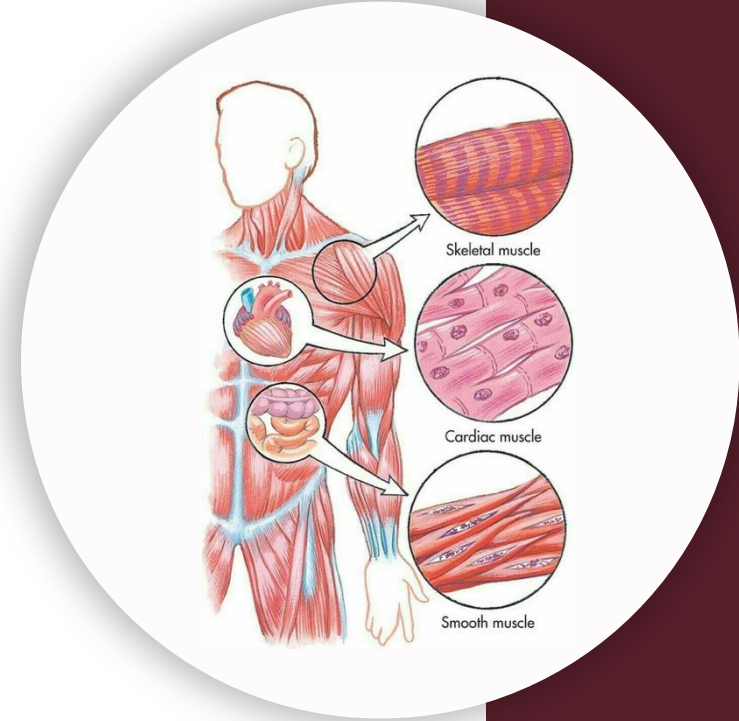
بِسْمِ اللّٰهِ الرَّحْمٰنِ الرَّحِیْمِ
(وَفَوْقَ كُلِّ ذِي عِلْمٍ عَلِيمٌ)



جناح

Histology | Final

Past Papers



Written by : DST

Reviewed by : Rama Ejueidi

**Q1:All of the following are lined by simple columnar with goblet
EXCEPT:**

- A. ileum.
- B. gallbladder.
- C. Small intestine.
- D. jejunum.
- E. colon.

Ans: B

Q2: Which one of the following organs the lining epithelium is simple columnar With numerous goblet cells:

- A. Gallbladder.
- B. Duodenum.
- C. Appendix.
- D. Colon.
- E. Stomach.

Ans: D

The defining keyword in this question is "numerous".

Q3: Mucosa of the large intestine are characterized by all the following EXCEPT:

- A. Lymphatic nodules are frequently seen in lamina propria.
- B. Mucosa is thicker than that of the small intestine it contains crypts of Lieberkühn but no villi.
- C. Muscularis mucosa is well developed.
- D. The cells of the crypts of Lieberkühn in lamina propria are the same as those of the small intestine.
- E. Lining epithelium is simple columnar absorbing cells with numerous goblet cells.

Q4: Intestinal glands contain all of the following except:

- Answer: Lacteals

Q5: The intestinal Villi contain all the followings EXCEPT:

- A. Smooth muscle.
- B. Striated borders.
- C. Paneth cells.
- D. Lacteals.
- E. Simple columnar epithelium and goblet cells.

Ans: c

Q6: All the following statements concerning the jejunum are correct EXCEPT:

- A. The mucosa has prominent plicae circularis.
- B. The mesentery contains simple arcades and long vasa recta.
- C. The submucosa contains Brunner's gland.
- D. The villi contain blood capillaries and lacteals.
- E. It is suspended from the posterior abdominal wall by mesentery.

Ans: C

Not all options were mentioned in the required material

Q7:Liver sinusoids, all of the following are correct EXCEPT:

- A. Separated from the underlying hepatocytes by the space of Disse
- B. Hepatocytes are in direct contact with the bloodstream
- C. Supported by reticular fibers
- D. Contain mixed blood
- E. Lined by endothelial cells and Kupffer cells

Ans: B

Q8:Section in the pancreas showed all the followings EXCEPT one:

- A.Intercalated duct
- B.Pancreatic acinar cells with polarity
- C.Striated ducts
- D.Centroacinar cells
- E.Interlobular ducts

Ans: C

Q9:Space of Disse: all the following statements are correct EXCEPT:

- A.It contains Ito cells
- B.It contains Kupffer cells
- C.It houses the microvilli of hepatocytes
- D.Supported by reticular fibers
- E.It intervenes between hepatocytes and sinusoidal lining cells

Ans: B

Not all options were mentioned in the required material

Q10:Regarding organs involved in bile production or storage, choose the correct statement:

- A.Mucus production in the cystic duct is due to presence of goblet cells
- B.Bile canaliculi are lined by hepatocytes
- C.Bile canaliculi connect the portal triad to the central vein
- D.The gallbladder is the site of bile dilution
- E.Hepatic stellate cells are found between canaliculi and hepatocytes

Ans: B

Not all options were mentioned in the required material

- **Q11: Which of the following is NOT part of a classic hepatic lobule?**
- A. Central vein
- B. Portal triads
- C. Hepatocyte plates
- D. Gallbladder duct
- E. Liver sinusoids

Ans: D

- **Q12:Kupffer cells are best described as:**
- A.Hepatic stellate cells responsible for vitamin A storage
- B.Fixed macrophages lining sinusoidal endothelium
- C.Ductal cells of bile canaliculi
- D.Portal fibroblasts
- E.Columnar epithelium of bile ducts

Ans: B

Not all options were mentioned in the required material

- **Q13: Which of the following organs is lined by simple columnar epithelium with microvilli and no goblet cells?**
- A. Colon
- B. Duodenum
- C. Appendix
- D. Ileum
- E. Gallbladder

Ans: E

- **Q14:Pancreatic islets differ from exocrine pancreas in that they:**
- A. Secrete enzymes
- B. Have ducts
- C. Are surrounded by acinar cells
- D. Secrete hormones into bloodstream
- E. Contain centroacinar cells

Ans: D

- **Q15: Which of the following is NOT true of the classic liver lobule?**
 - A. Central vein is at the center
 - B. Portal triads are at the periphery
 - C. Blood flows from central vein toward portal area
 - D. Sinusoids radiate from periphery to center
 - E. Hepatocyte plates radiate from the central vein

Ans: C

• **Q16: All of the following are features of hepatocytes EXCEPT:**

- A. Polyhedral shape
- B. Binucleation
- C. Presence of bile canaliculi
- D. Presence of secretory granules
- E. Microvilli projecting into the space of Disse

Ans: D

• **Q17: The gallbladder differs from most of the GI tract by:**

- A. Having no submucosa
- B. Having goblet cells
- C. Having crypts
- D. Having villi
- E. Lacking muscularis externa

Ans: A

• **Q18:Centroacinar cells of pancreas are part of:**

- A.Endocrine islets
- B.Exocrine acini
- C.Interlobular ducts
- D.Portal triad
- E.Gallbladder

Ans: B

- **Q19: The anal canal above the pectinate line is lined by which type of epithelium?**
- A. Stratified squamous keratinized
- B. Stratified cuboidal
- C. Stratified squamous non-keratinized
- D. Simple cuboidal
- E. Simple columnar

Ans: E

- **Q20: Wrong about colon histology:**
 - A. Presence of Peyer's patches
 - B. Presence of crypts
 - C. Numerous goblet cells
 - D. Simple columnar epithelium
 - E. Muscularis mucosa is well developed

Ans: A

• **Q21:One of the following has simple columnar epithelium with numerous goblet cells and lymphoid aggregates:**

- A.Colon
- B.Duodenum
- C..Jejunum
- D.Appendix
- E.Stomach

Ans: D

(we referred to lymphoid aggregates more than numerous goblet cells) that's why it is D and not A

• **Q22:Identify the pointed structures in this section::**

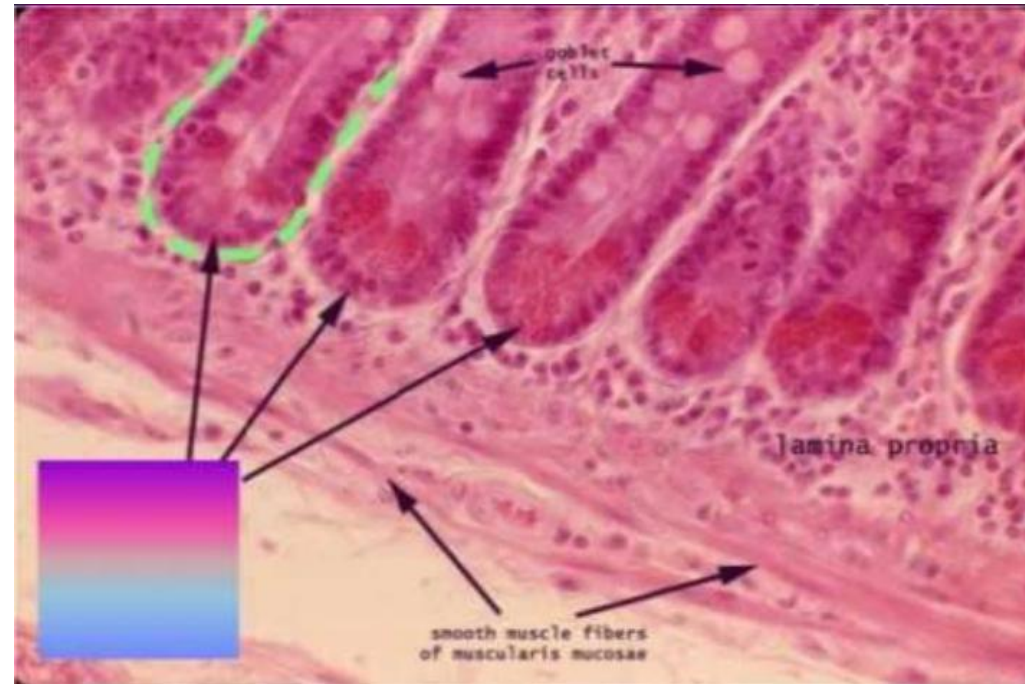
• A.Intestinal gland

• B.Brunner's gland

• C.Gastric gland

• D.Von Ebner's gland

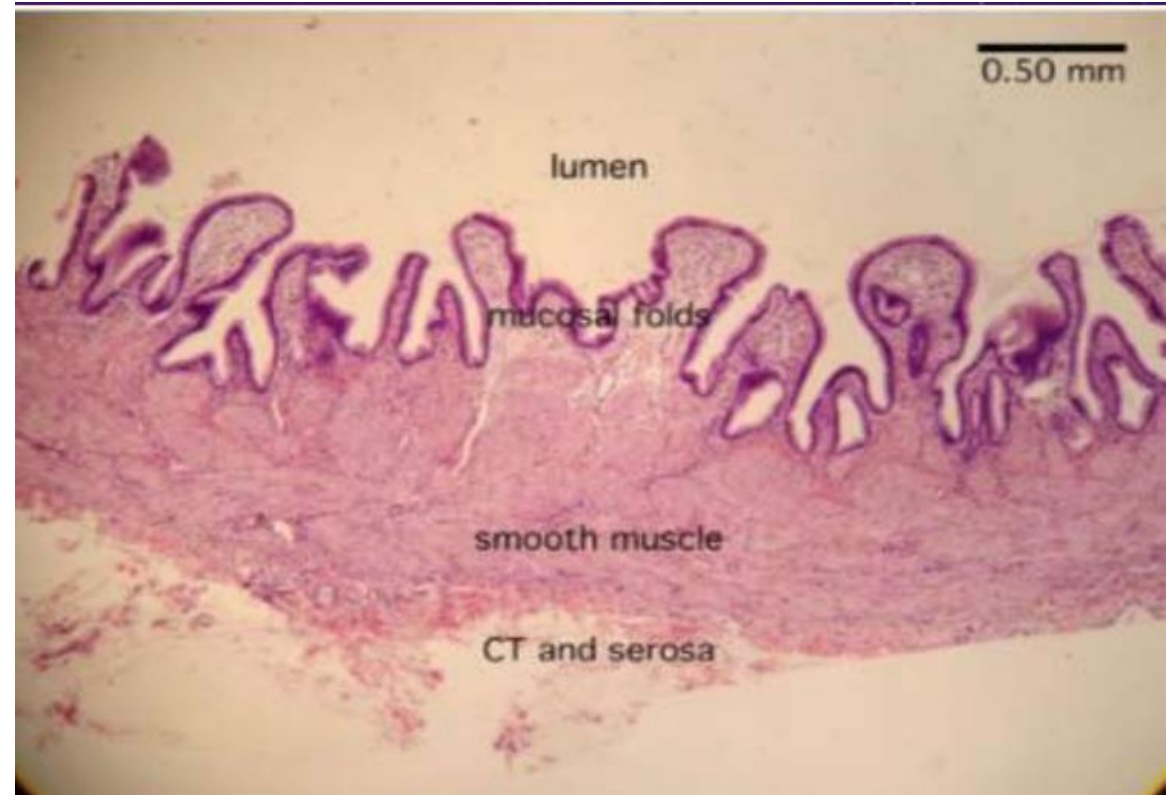
• E.Esophageal gland



Ans: A

• **Q23:Identify this section::**

- A.Esophagus.
- B.Duodenum.
- C.Colon.
- D.Appendix.
- E.Gallbladder.



Ans: E

• **Q24: Identify the pointed structure in this section:**

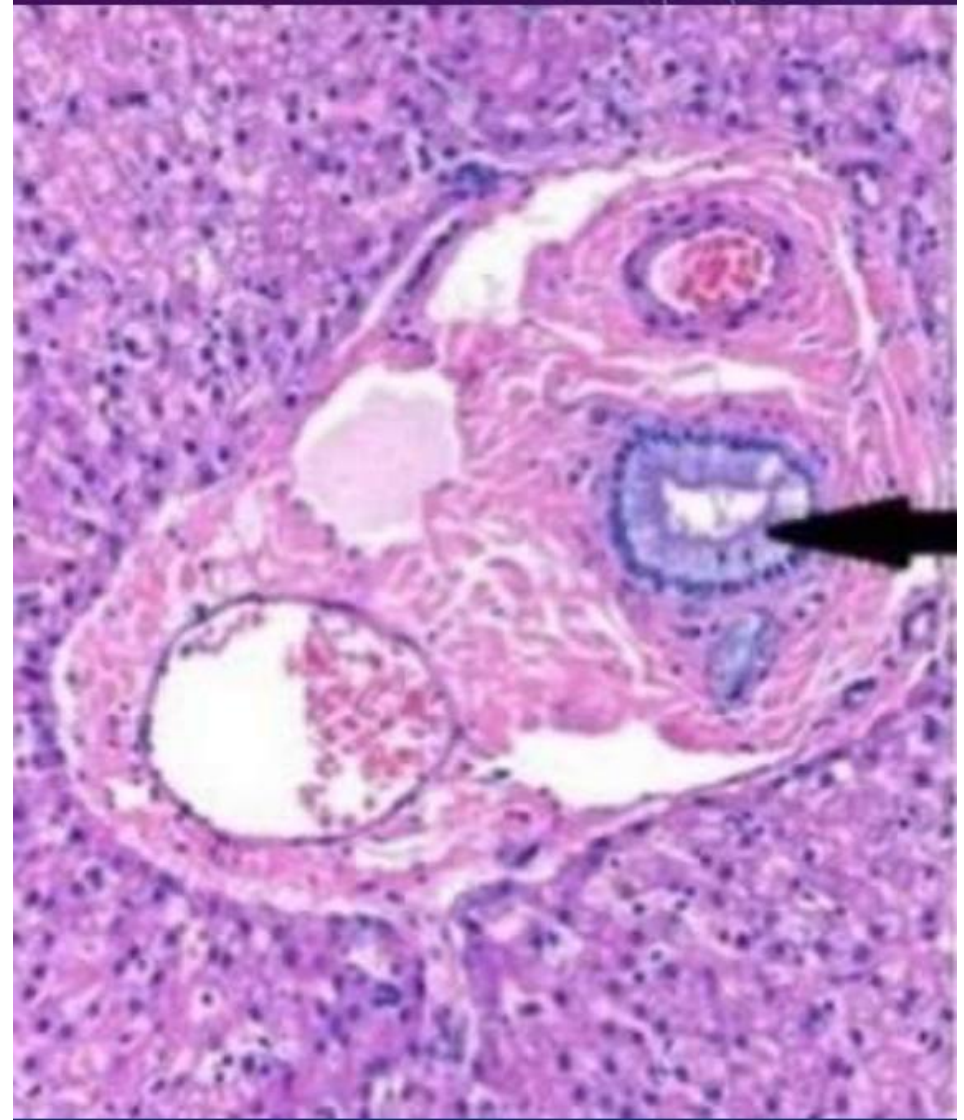
- A. Branch from portal vein.
- B. Bile duct.
- C. Central vein.
- D. Branch from hepatic artery.
- E. Blood sinusoids.



Ans: C

• **Q25:Identify the pointed structure::**

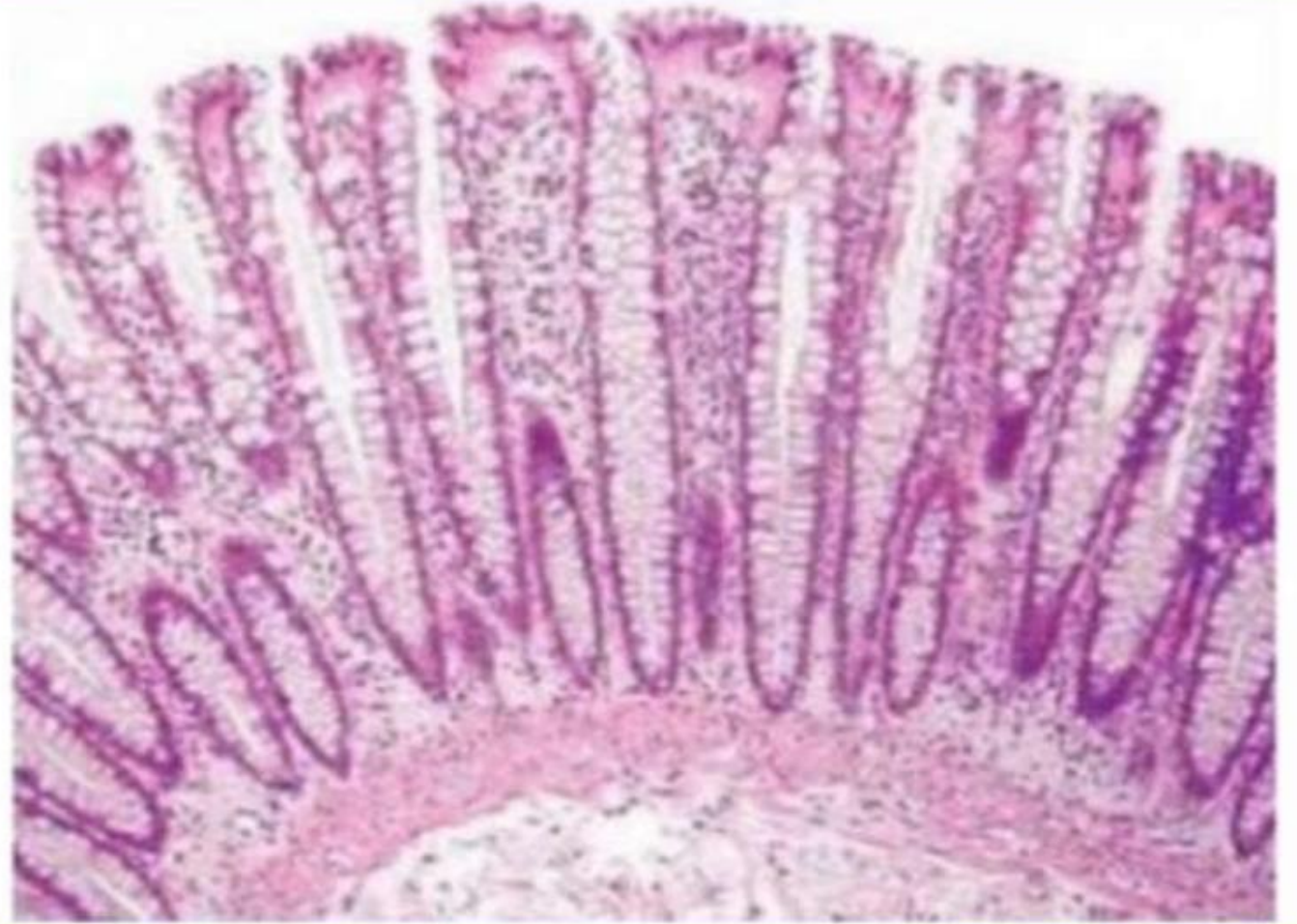
- A.Portal Vein.
- B.Hepatic Artery.
- C.Porta hepatis.
- D.Blood Sinusoids.
- E.Bile Duct.



Ans: E

• **Q26:Identify this section:**

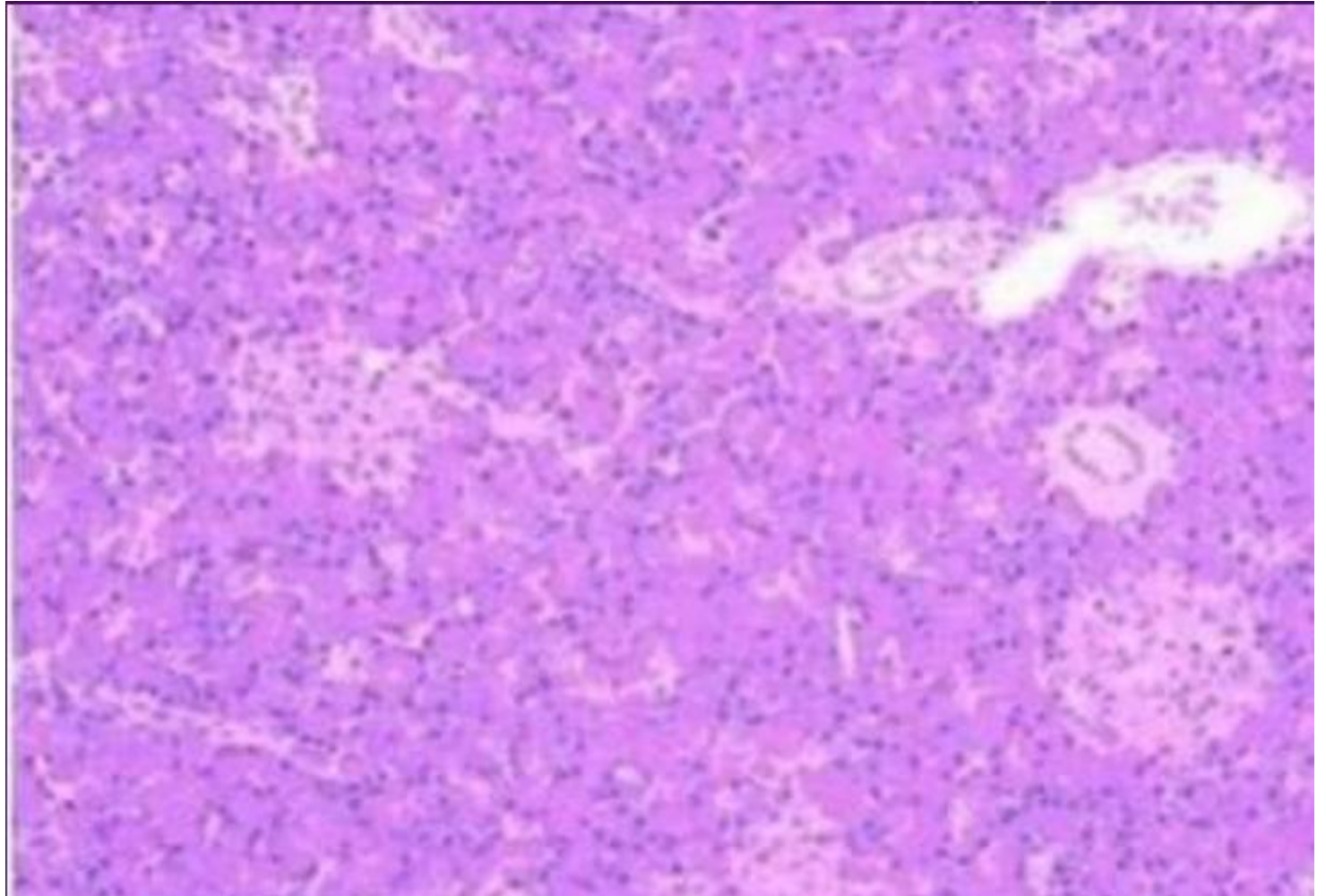
- A.Appendix.
- B.Colon.
- C.Gallbladder.
- D.Duodenum.
- E.jejunum.



Ans: B

• **Q27:Identify this section:**

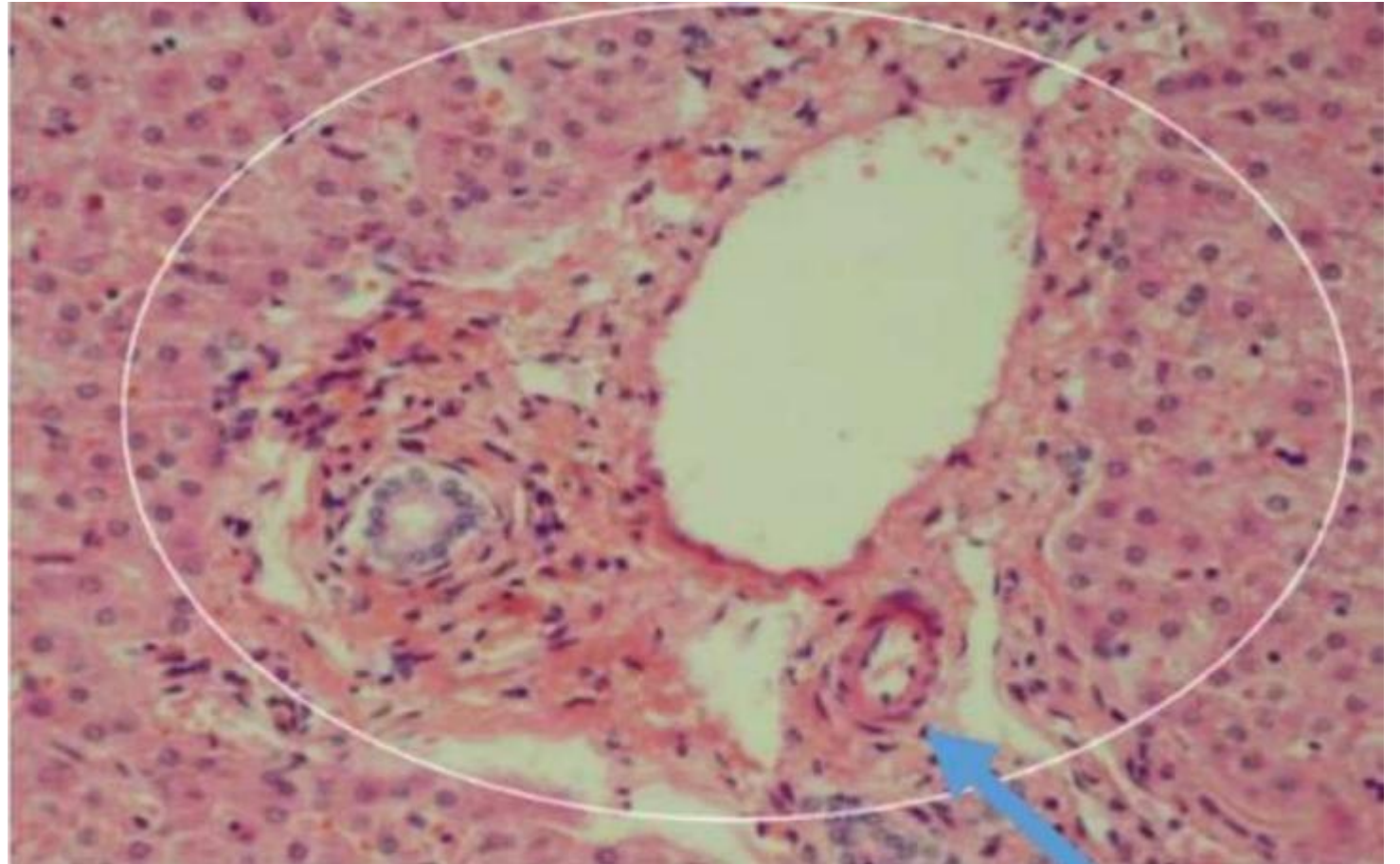
- A.Parotid gland.
- B.Sublingual gland.
- C.Pancreas.
- D.Liver.
- E.Submandibular gland.



Ans: C

• **Q28: The pointed structure:**

- A. portal triad.
- B. bile duct.
- C. portal vein.
- D. hepatic artery.
- E. Central vein.



Ans: D

• **Q29:Identify this section:**

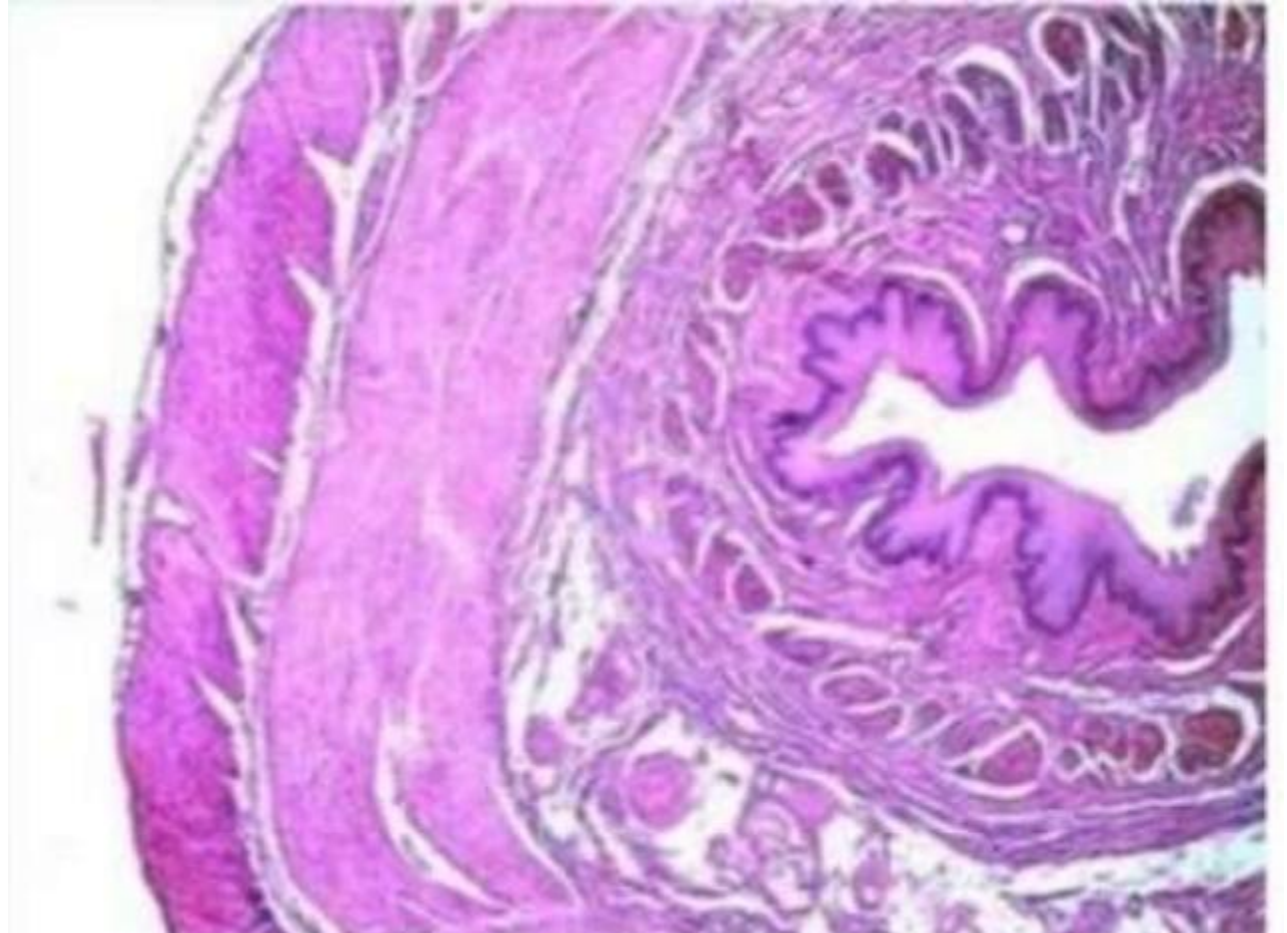
• A.Gallbladder.

• B.Esophagus.

• C.Ileum.

• D.Duodenum.

• E.Stomach.



Ans: B

• **Q30: Identify the pointed cells in this section:**

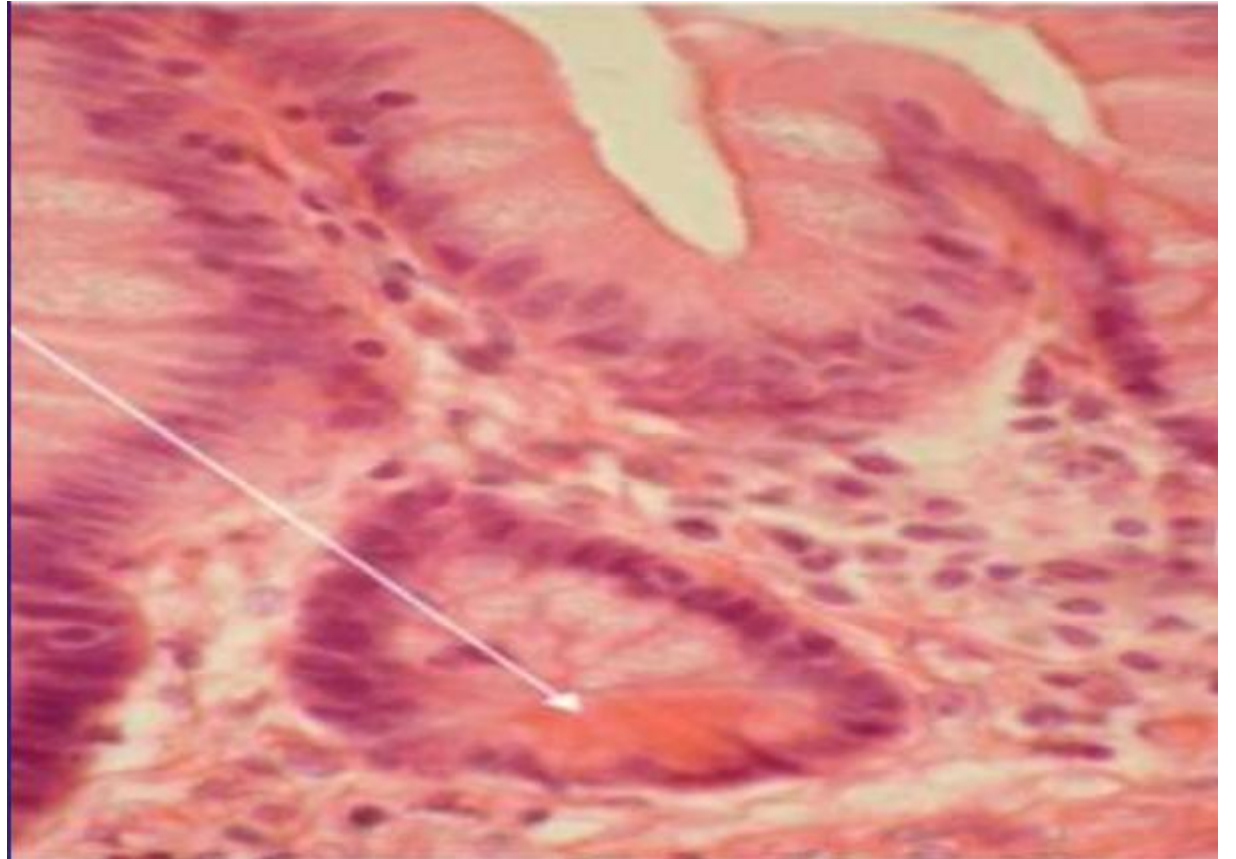
- A. Chief cells.
- B. Parietal cells.
- C. Mucous cells.
- D. Paneth cell.
- E. Lymphocytes.



Ans: A

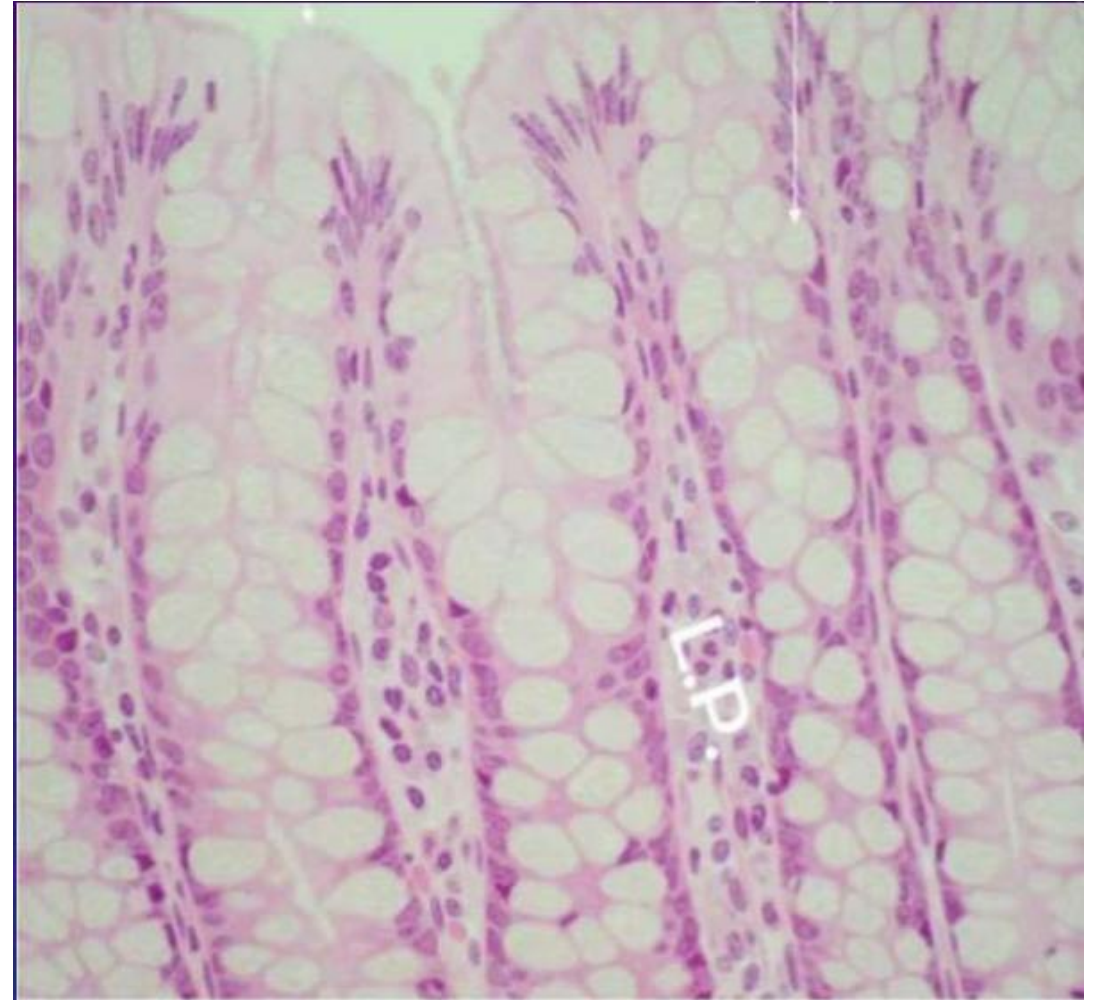
- **Q31: The pointed cells are:**

- Answer: paneth cell.



• **Q32: The Type of the gland in the picture:**

• A) Answer: simple tubular gland



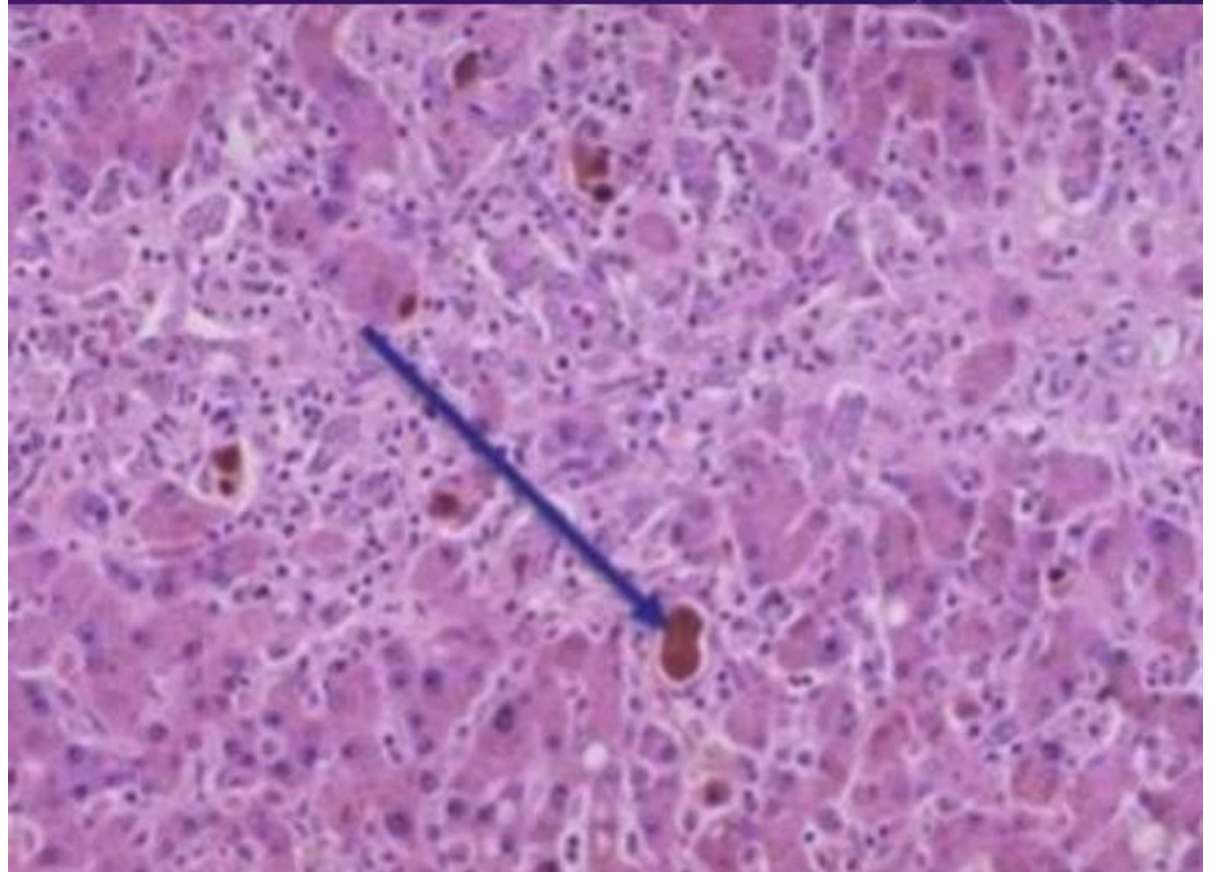
• **Q33: The Type of the gland in the picture:**

• **Answer: simple tubular gland**



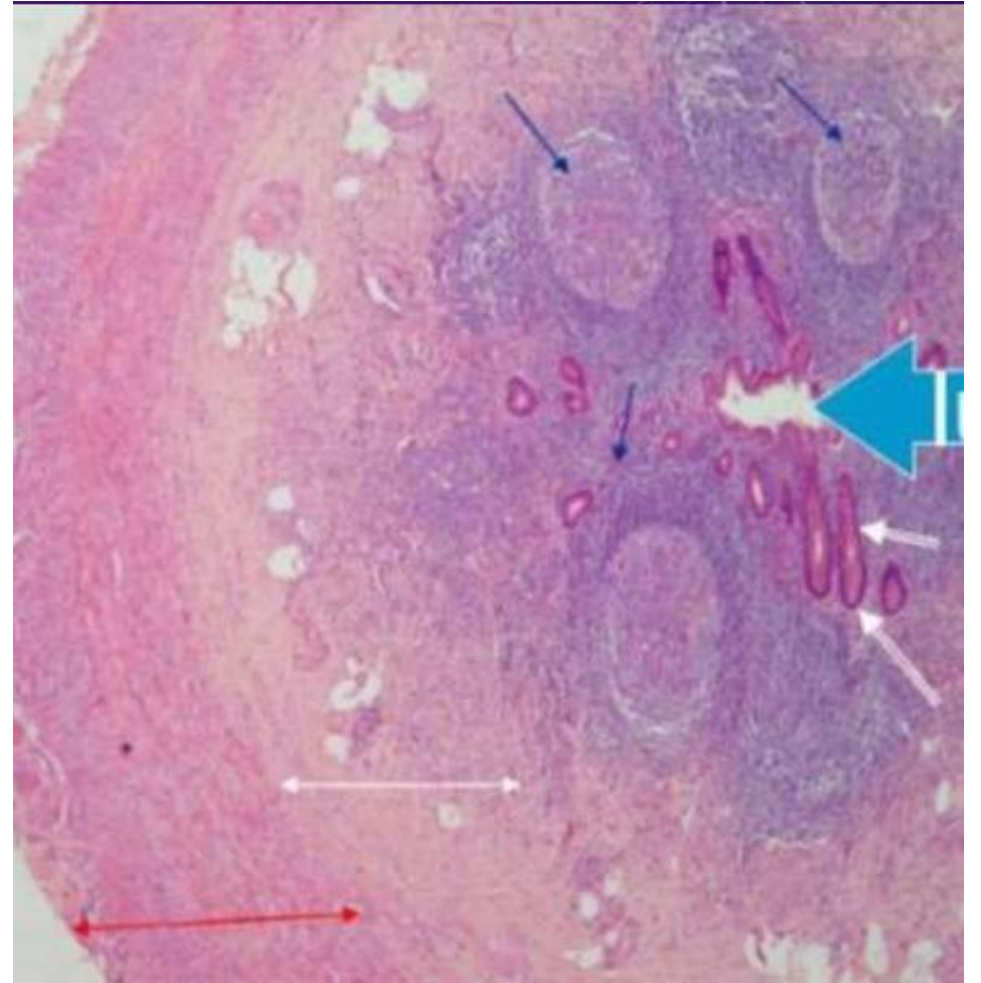
• **Q34: The picture represents:**

• Answer: accumulation of bile



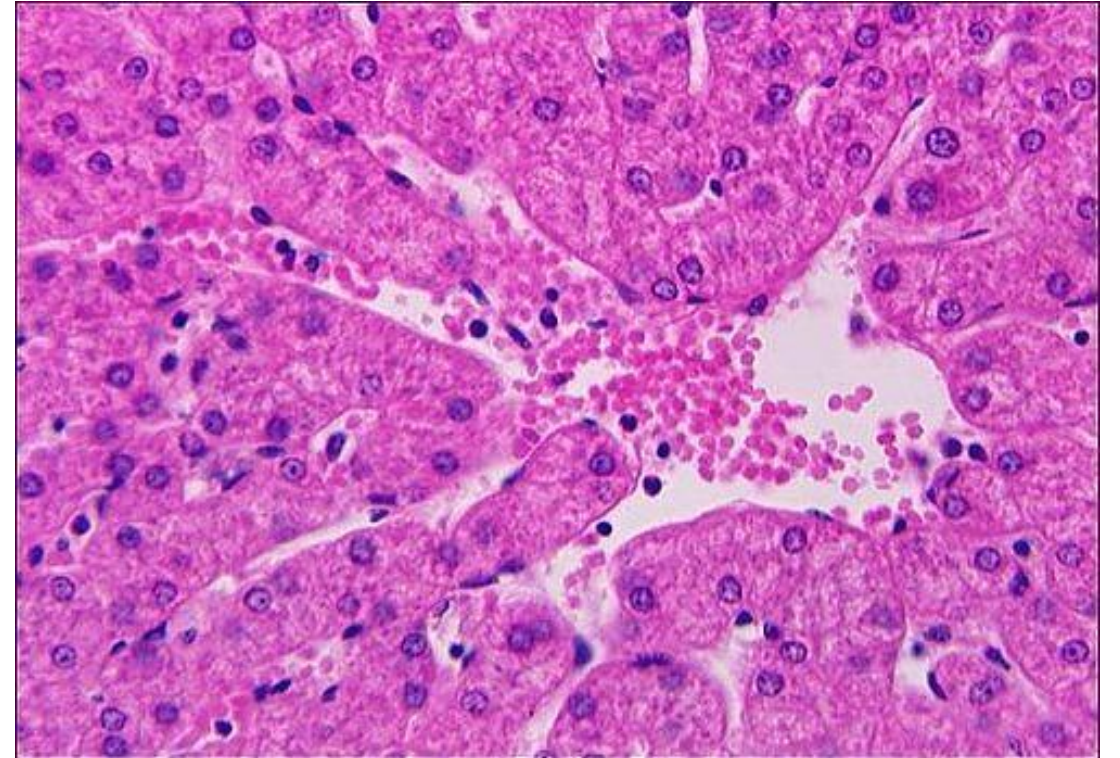
• **Q35: The following histological section is from:**

• Answer: appendix



• **Q36:which of the following isn't found in this picture :**

- A.kupffer cells
- B.fenestreted epithelial cells.
- C.fat storage.



Ans: C

رسالة من الفريق العلمي:



Be stronger than
your excuses.

For any feedback, scan the code or click on



Corrections from previous versions:

Versions	Slide # and Place of Error	Before Correction	After Correction
V0 → V1			
V1 → V2			