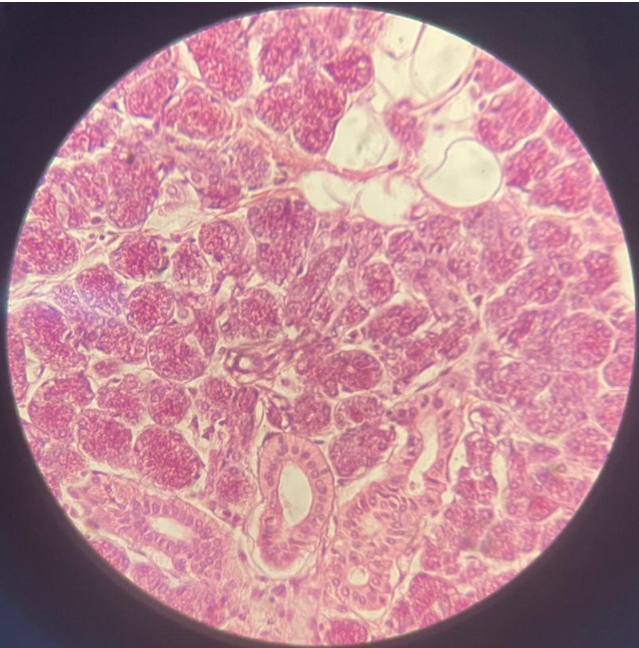


Tongue



Salivary gland  
submaxillary

Sec. ✓ H 8835

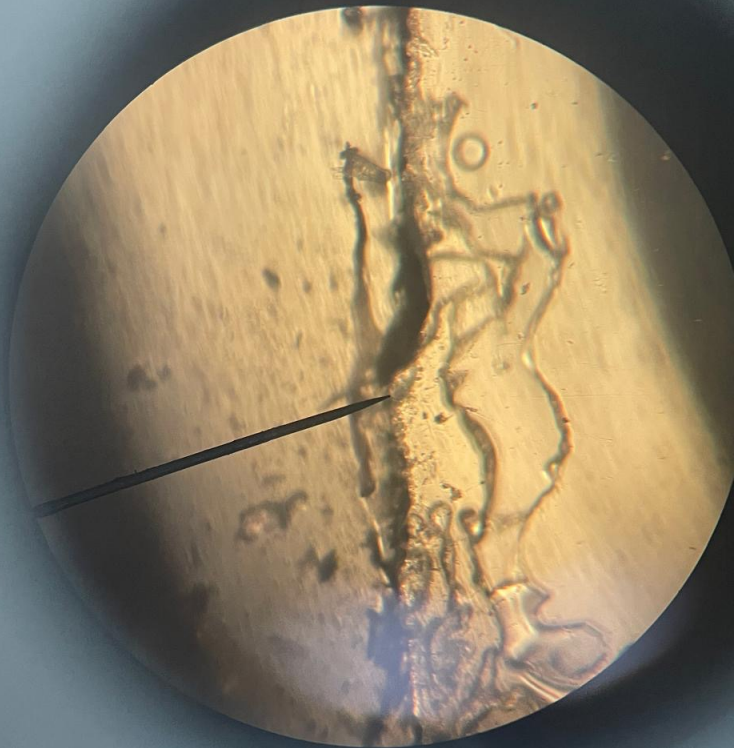
*duct*  
Carolina Biological  
Supply Company  
Burlington, N. C.

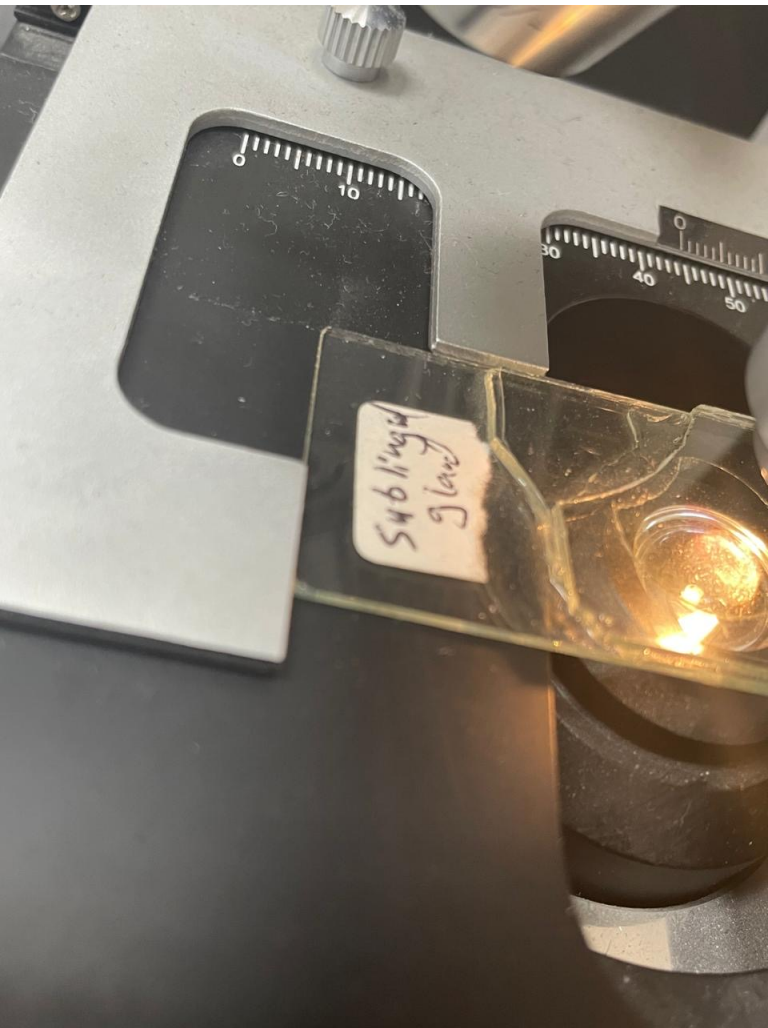


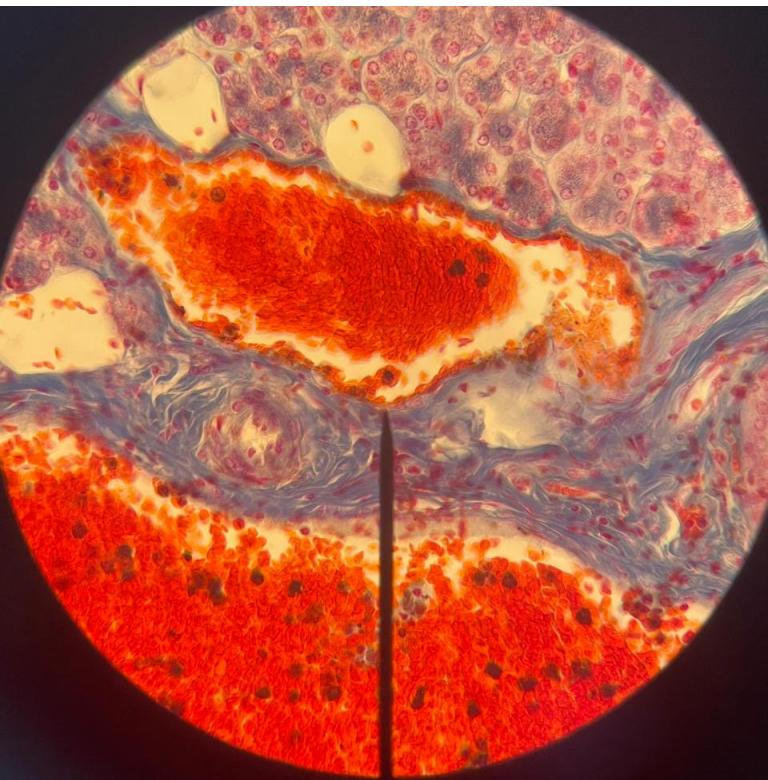


63  
AMERICAN UNIVERSITY  
OF BEIRUT

H1  
Parotid gl.







A close-up photograph of a microscope slide mounted on a microscope. The slide is held in place by a metal slide holder. A label is affixed to the slide, providing specimen information. A 0.25x objective lens is positioned above the slide, and a portion of the eyepiece is visible on the right. The microscope's stage has two black scales with white markings. The top scale is marked from 0 to 10, and the bottom scale is marked from 30 to 50. The slide is labeled with the specimen ID 'Ho352f', the specimen name 'Submaxillary gland (Gl. submandibularis) t.s.', and the course 'Human histology'.

Ho352f

Submaxillary  
gland (Gl. subman-  
dibularis) t.s.

Human histology



97-  
Esophagus  
-1014K  
n.-e.

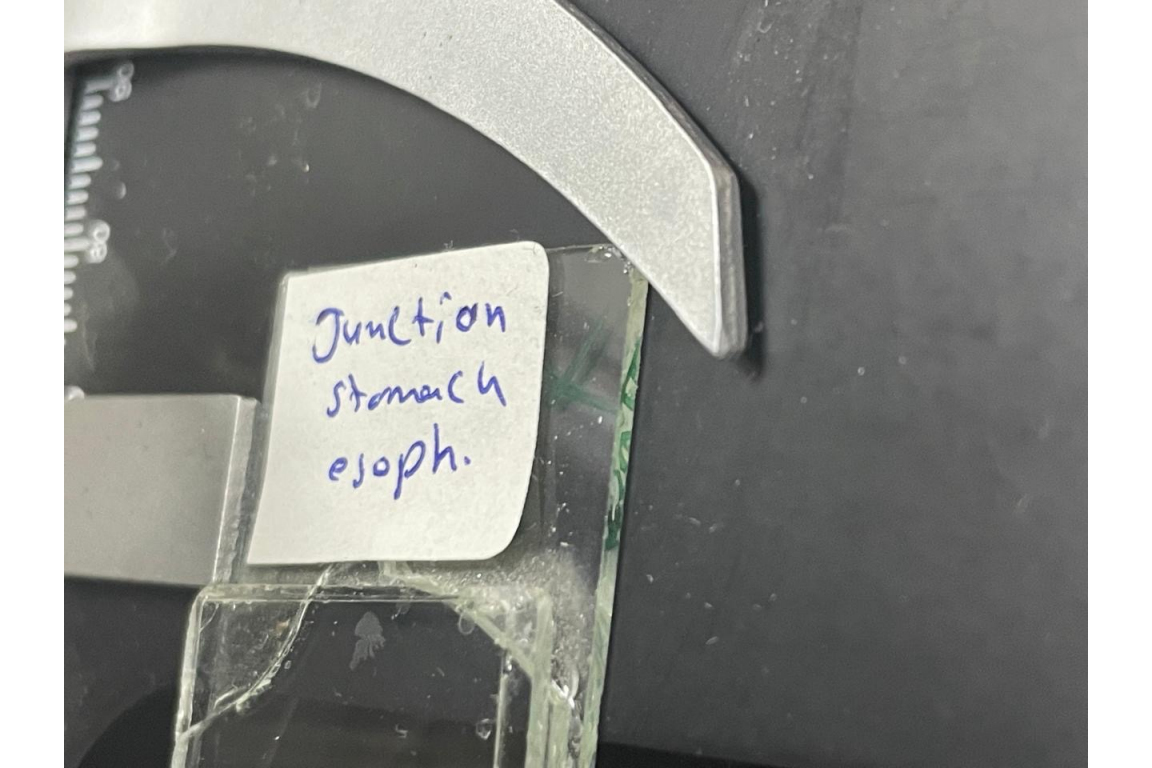
C. S.

1.5  $\mu$ m

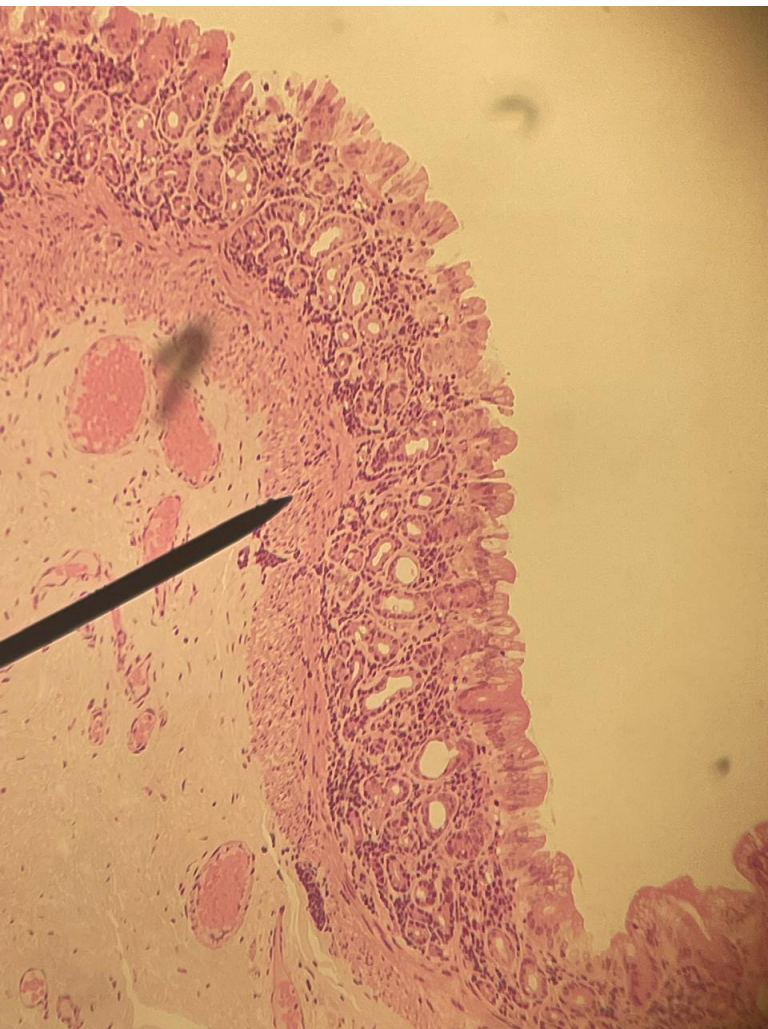
**CAROLINA BIOLOGICAL  
SUPPLY COMPANY**

100  
0  
10  
20  
30



A clear plastic container, possibly a vial or small jar, is shown. A white rectangular label is affixed to the front of the container with handwritten text in blue ink. The text reads "Junction stomach esoph." The container appears to contain a clear, gelatinous substance. A metal clamp or forceps is positioned at the top of the container, holding it in place. The background is dark and out of focus.

Junction  
stomach  
esoph.

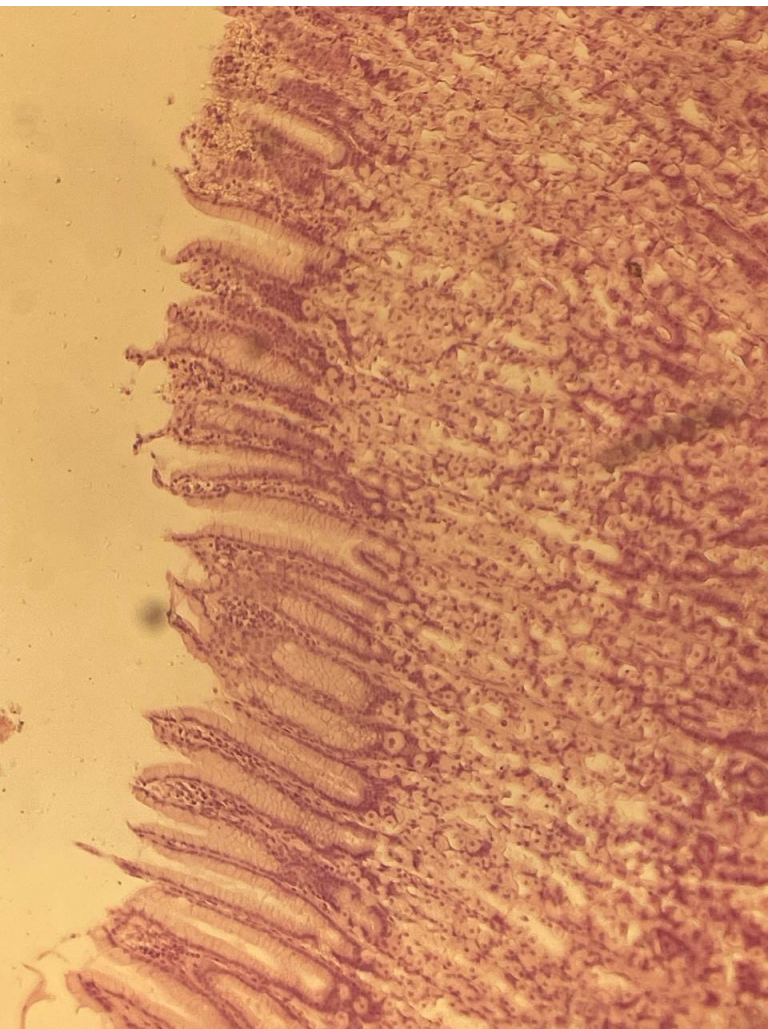


98-9480  
Stomach, Cardiac  
Monkey

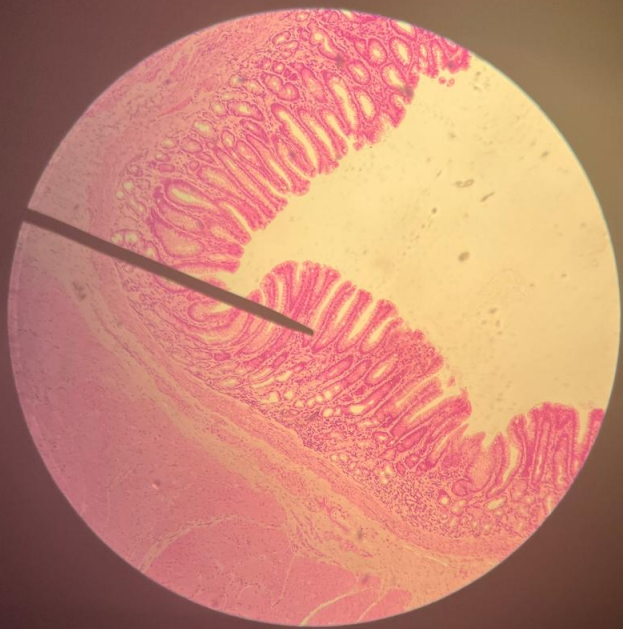
sec. h.-e.

1.5  $\mu$ m

CAROLINA BIOLOGICAL  
SUPPLY COMPANY



Stomach  
Fundus



✓ 98-9500  
Stomach Pyloric  
Monkey h.-e. ✓  
sec. ✓ 1.5 μm  
CAROLINA BIOLOGICAL  
SUPPLY COMPANY

0 20 30 40



esophagus  
middle

+ 0 E

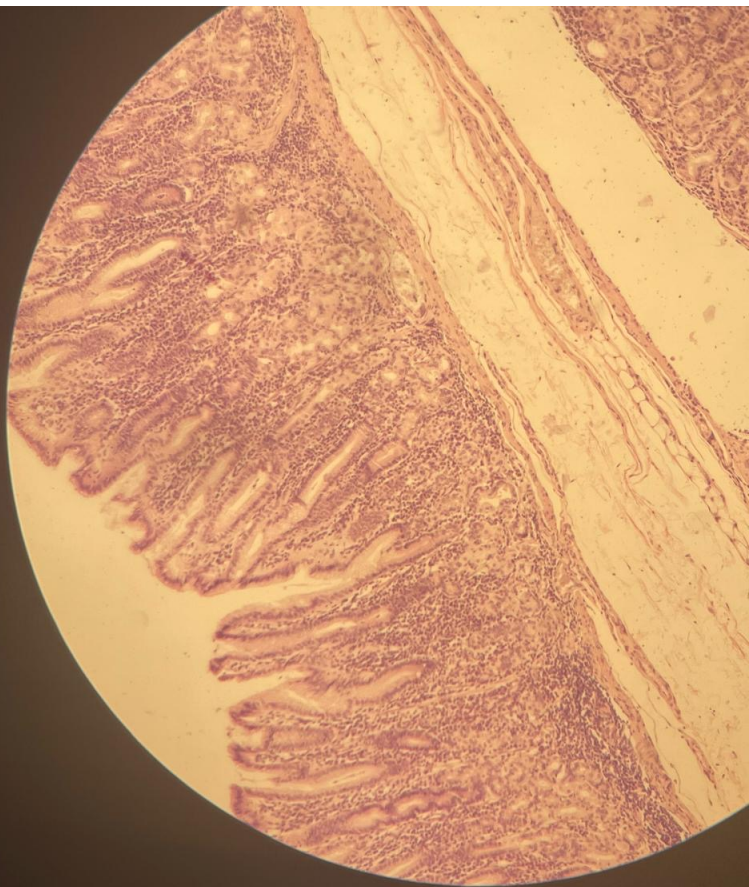
0 10 20 30 40 50

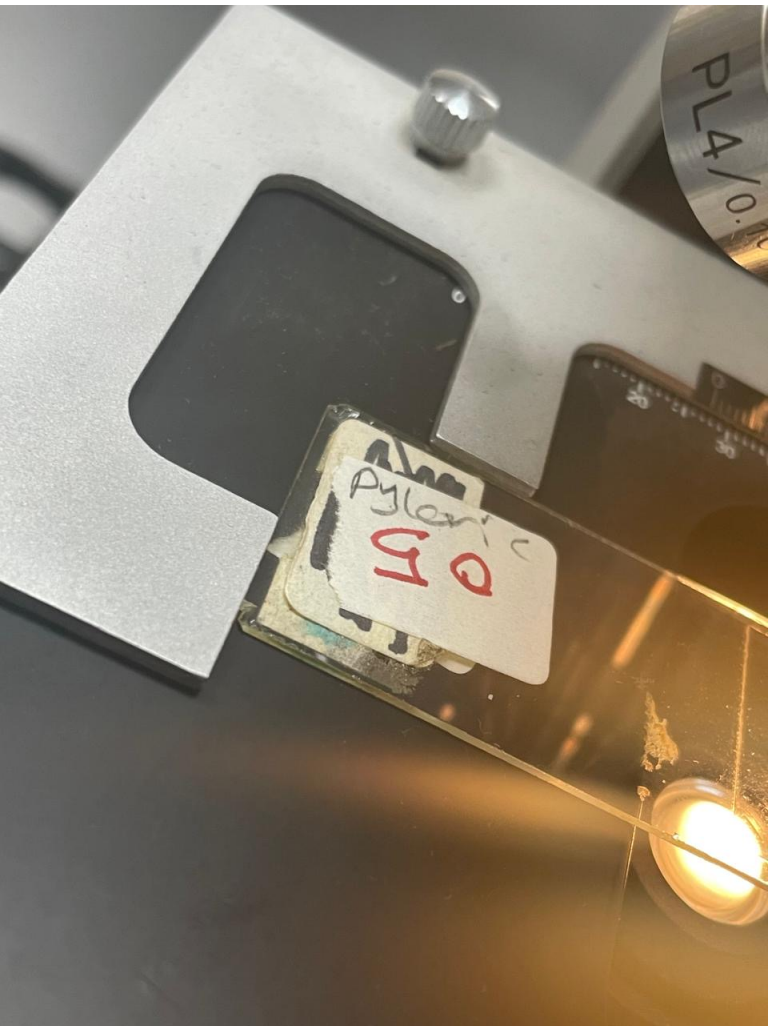
0







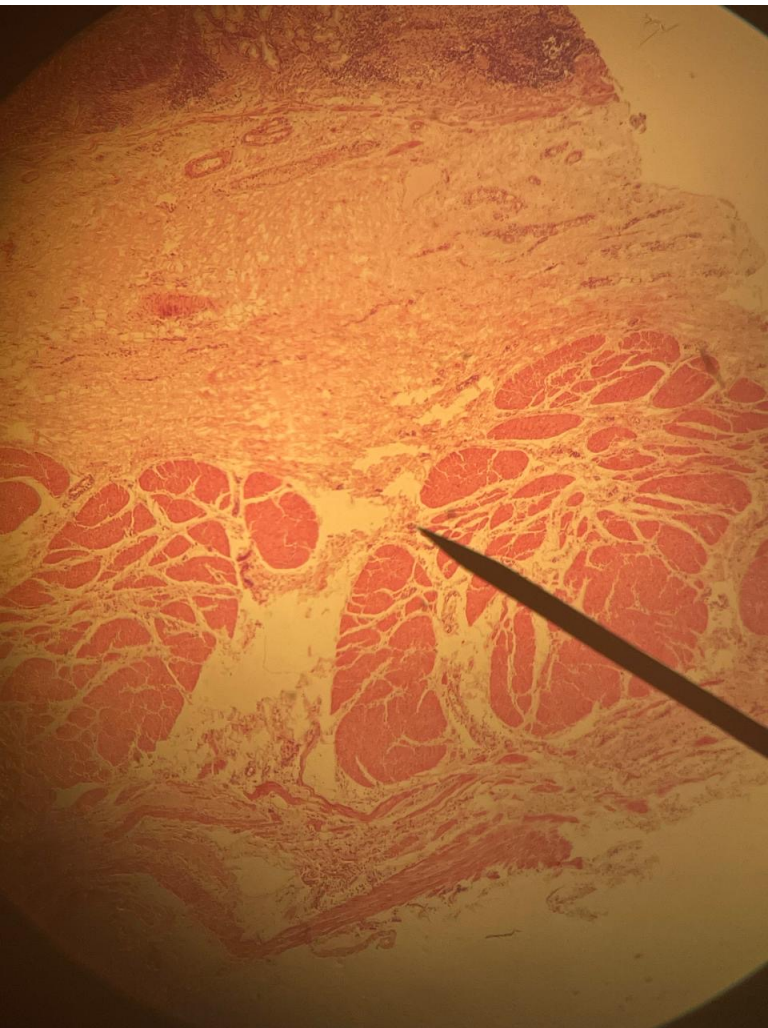


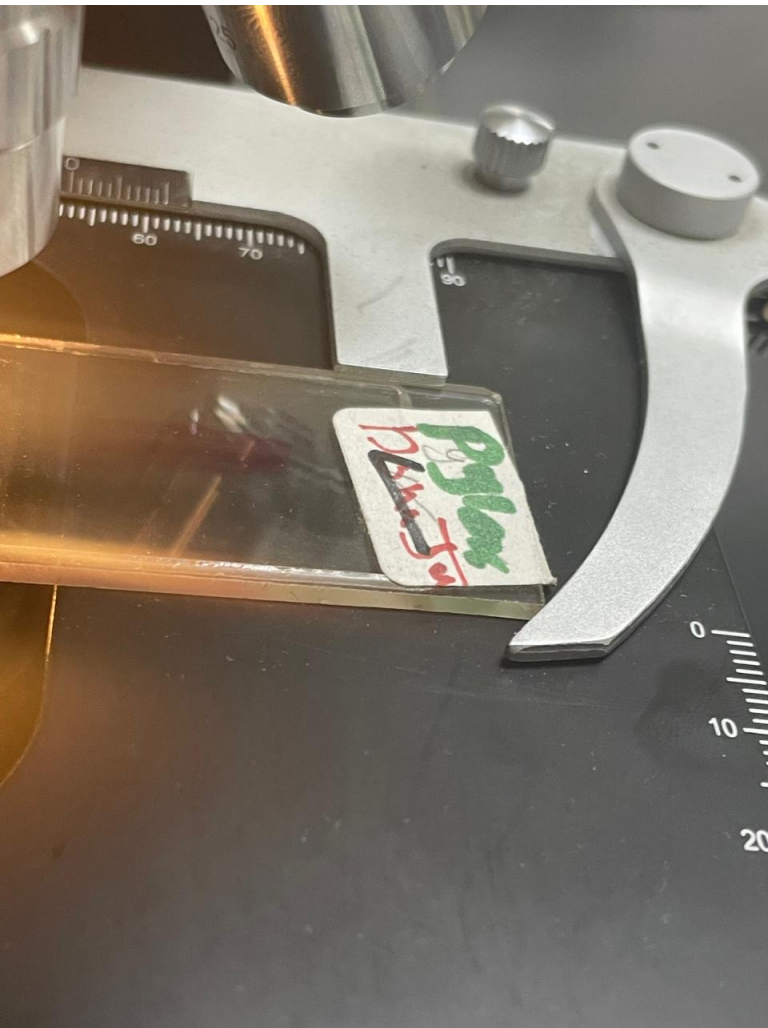


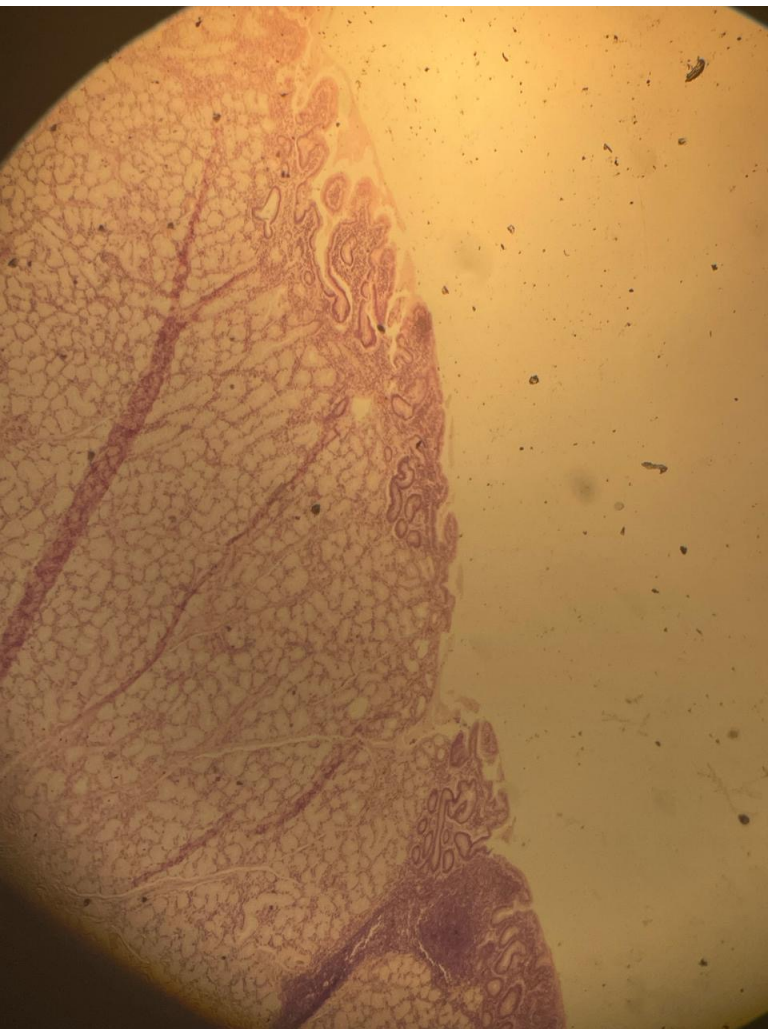
PLA/0.0

Pylenic  
50

20  
30









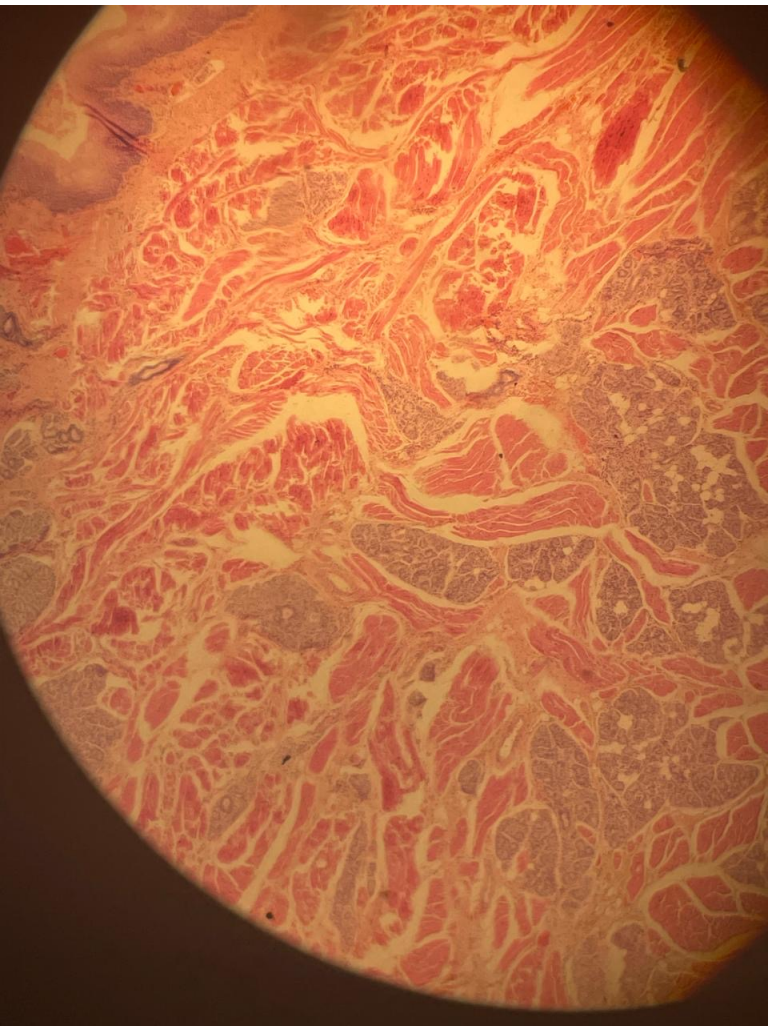
Turtox

No. H5.46

Stomach and  
intestine, l.s.

Gen. Biol. Sup. House  
Chicago, Illinois  
Made in U. S. A.





Tongue  
muscl.  
← S?  
E.P.L.



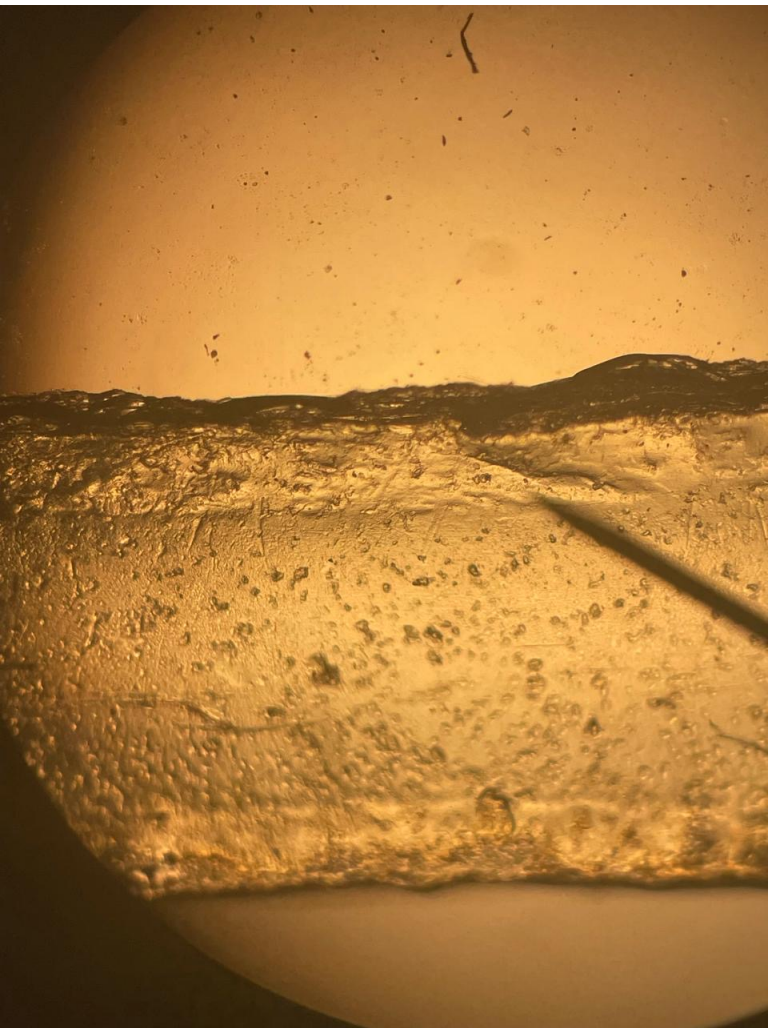
CIVIC

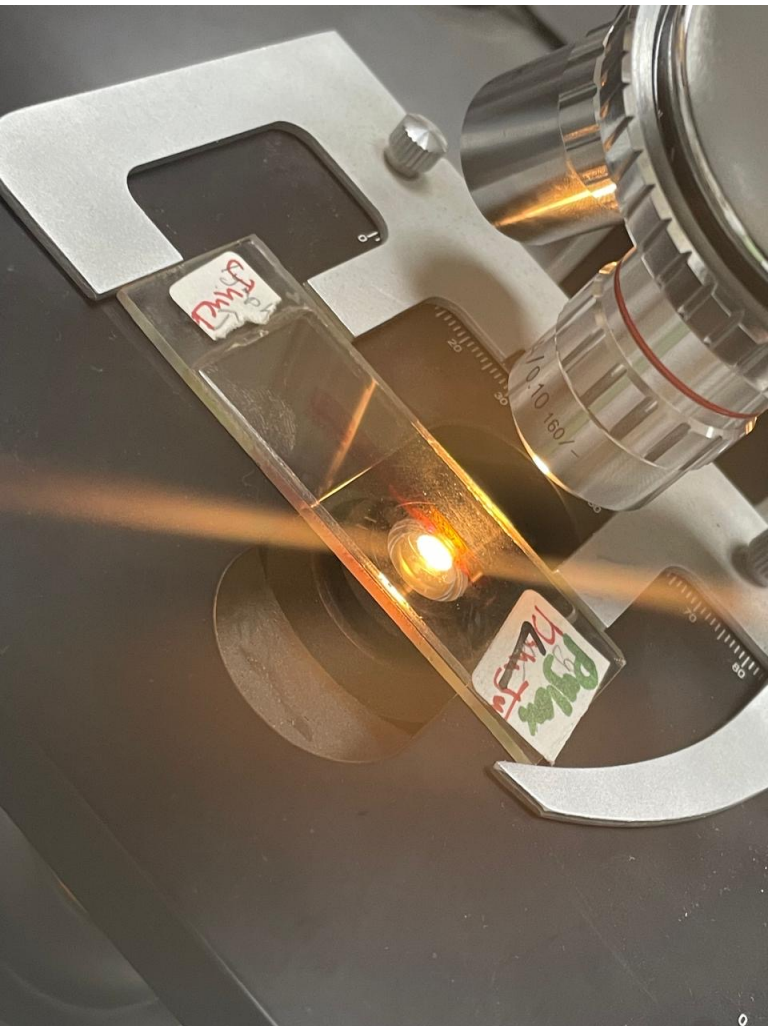
60 98

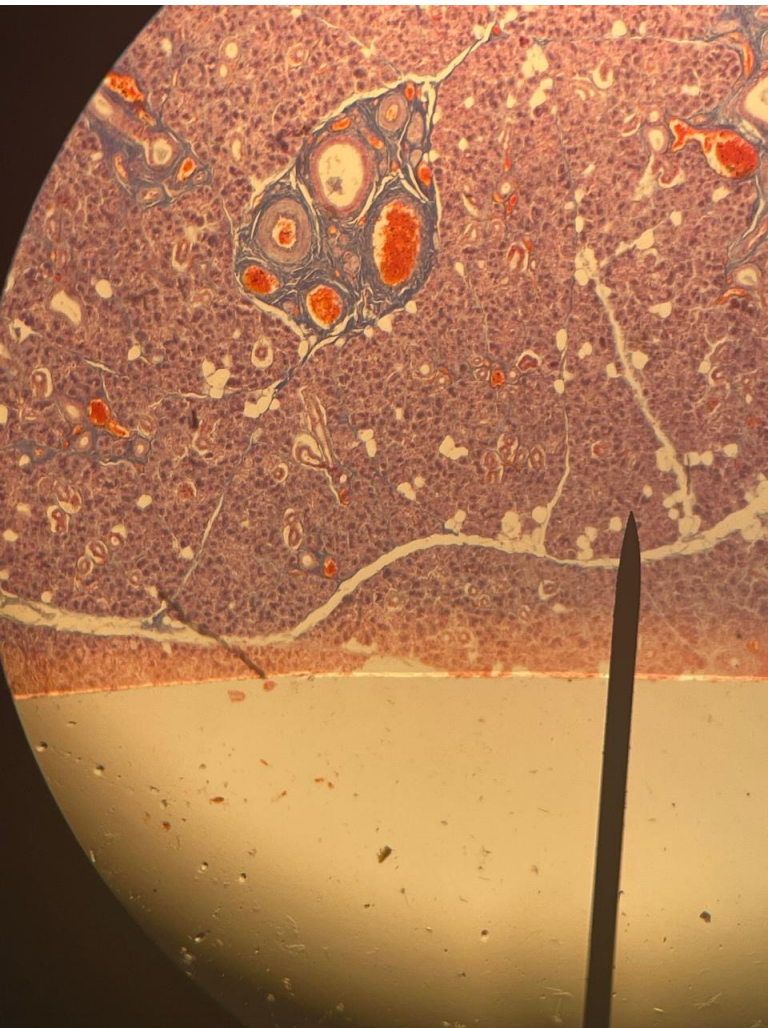
Town

Tongue

20

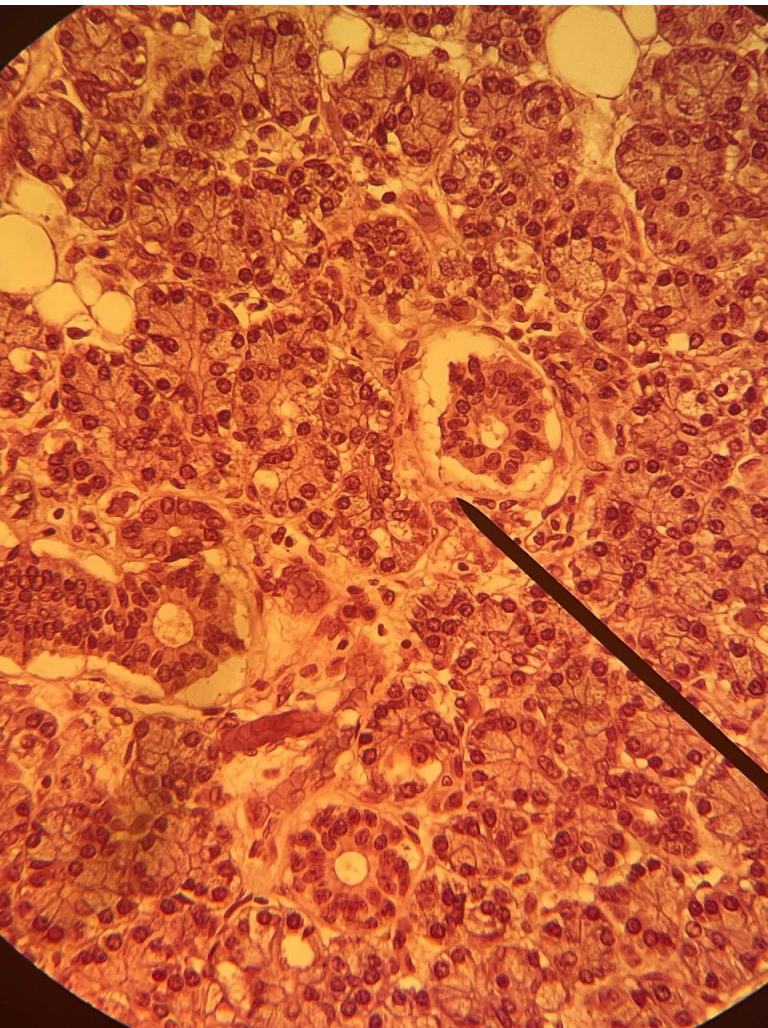






Ho352f  
Submaxillary  
gland (Gl. subman-  
dibularis) t.s.

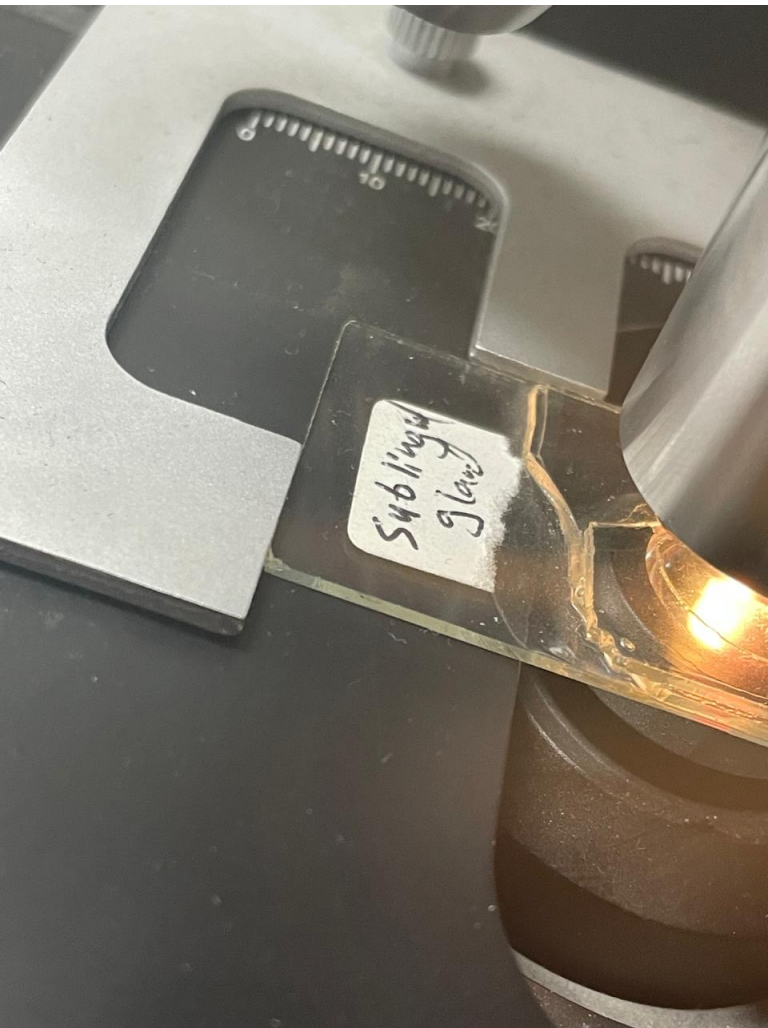
Human histology

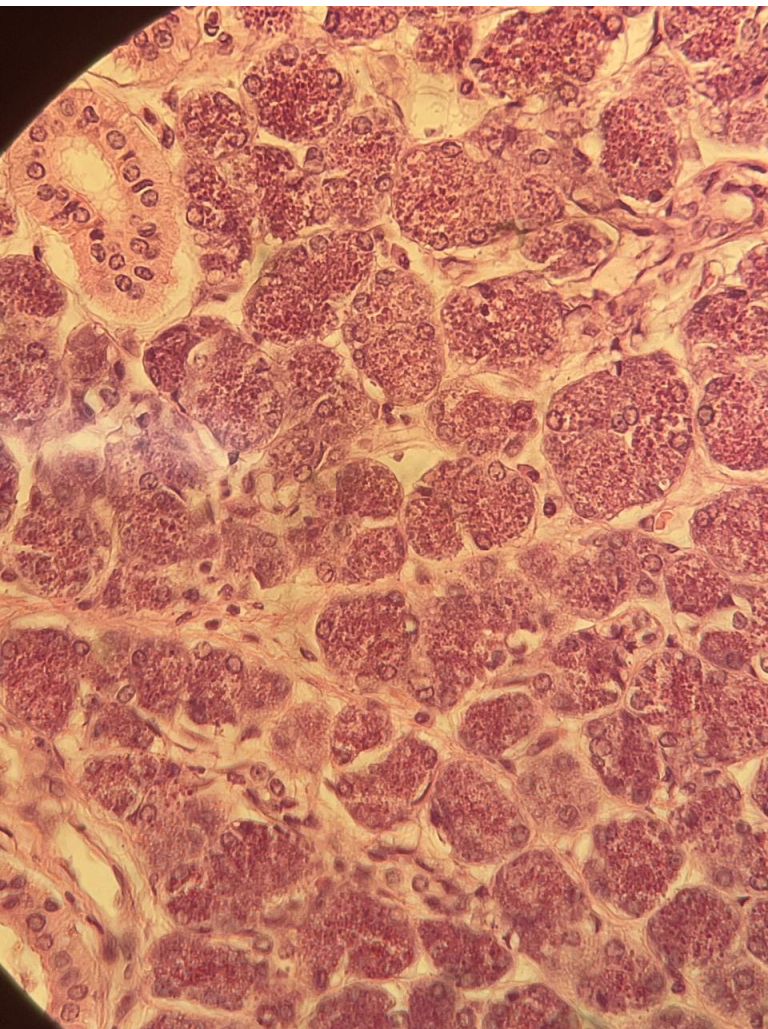


8  
63  
AMERICAN UNIVERSITY  
HI OF BEIRUT

Paroh' of gl.







Salivary gland  
submaxillary

Sec. ✓

H 8835

duct  
Carolina Biological  
Supply Company  
Burlington, N. C.



98-9500  
Stomach Pyloric  
Monkey

sec. ✓

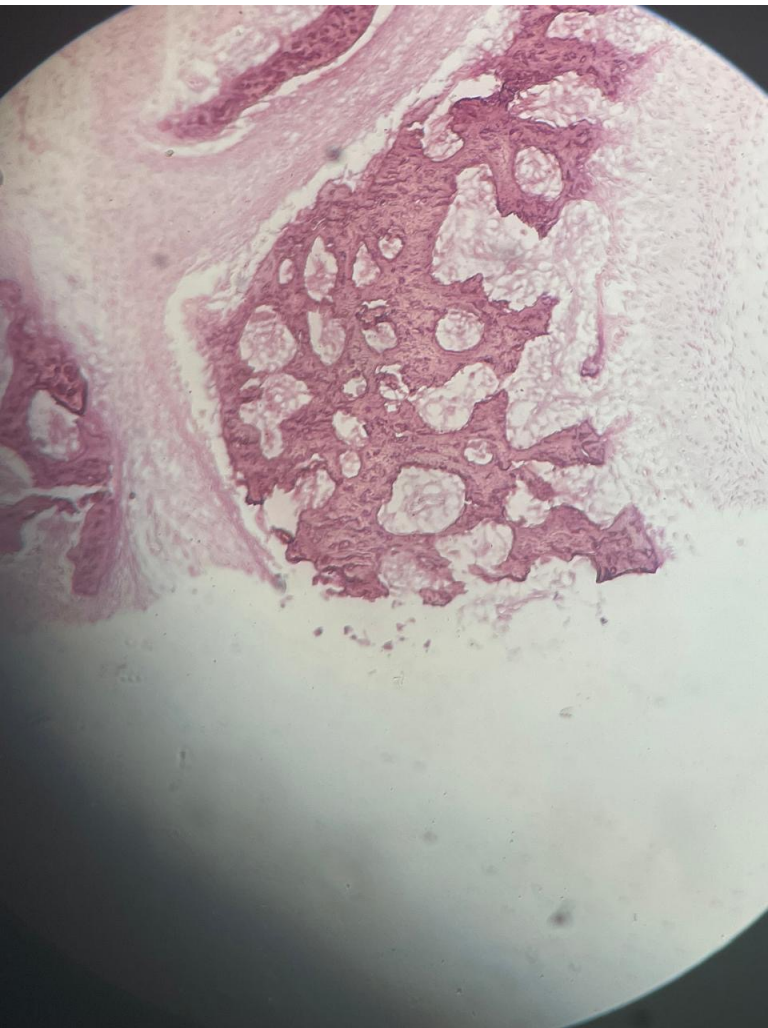
1.5  $\mu$ m

CAROLINA BIOLOGICAL  
SUPPLY COMPANY



tip  
no  
m  
glor

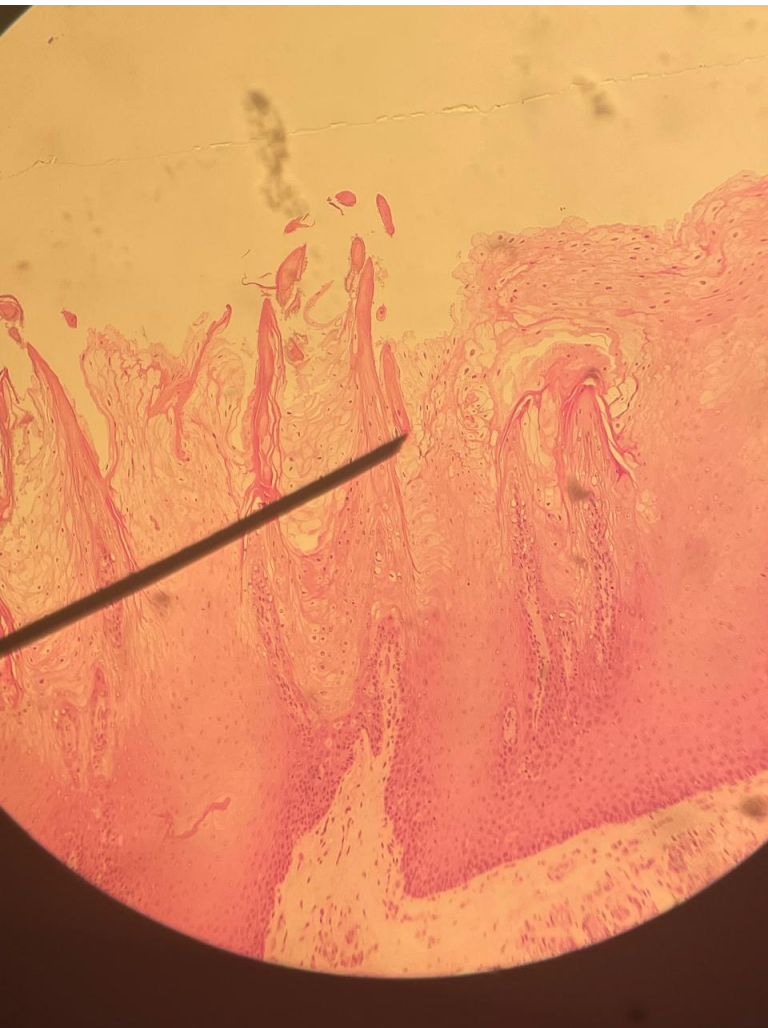
10



Nose,  
upper lip  
Human fetus  
Sag. sec.

H 7610

Carolina Biological  
Supply Company  
Burlington, N. C.



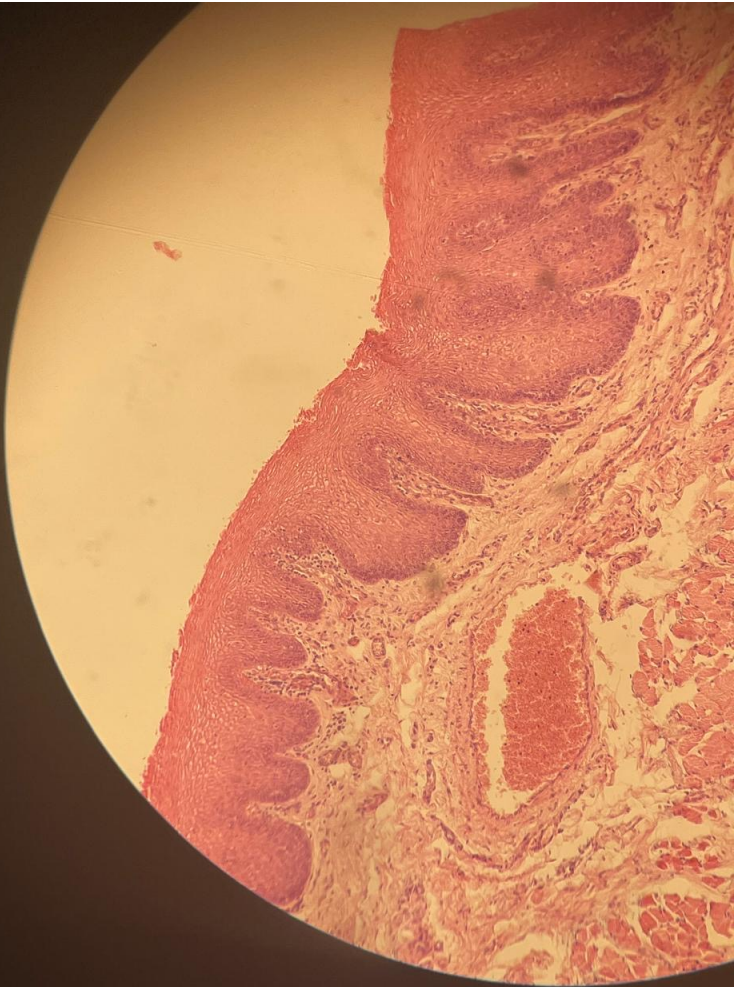
No 98-9390  
Pap. Tongue  
Monkey h.-e.

sec. 1.5  $\mu$ m

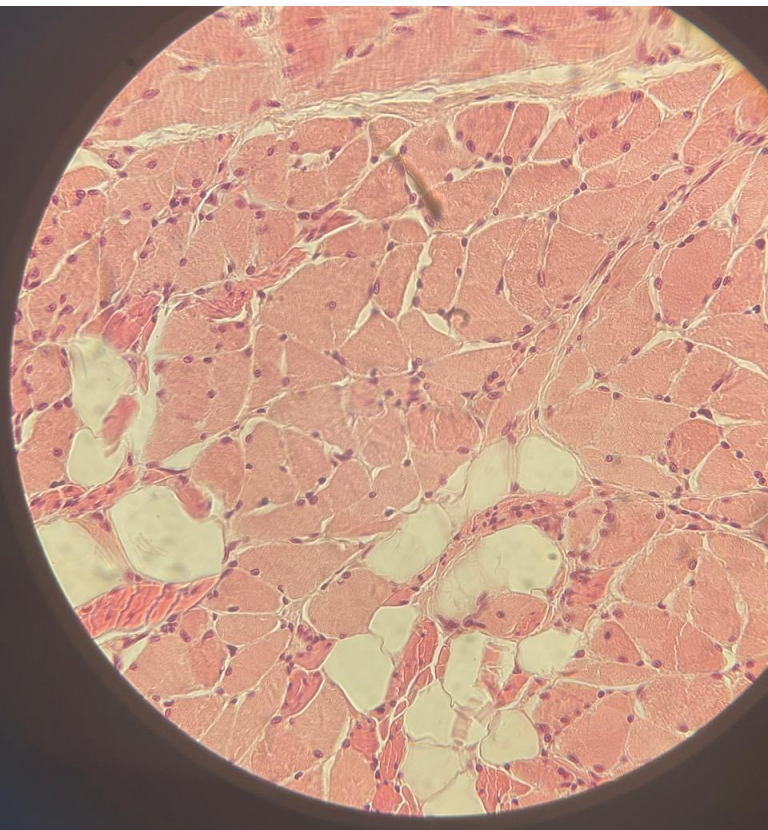
CAROLINA BIOLOGICAL  
SUPPLY COMPANY

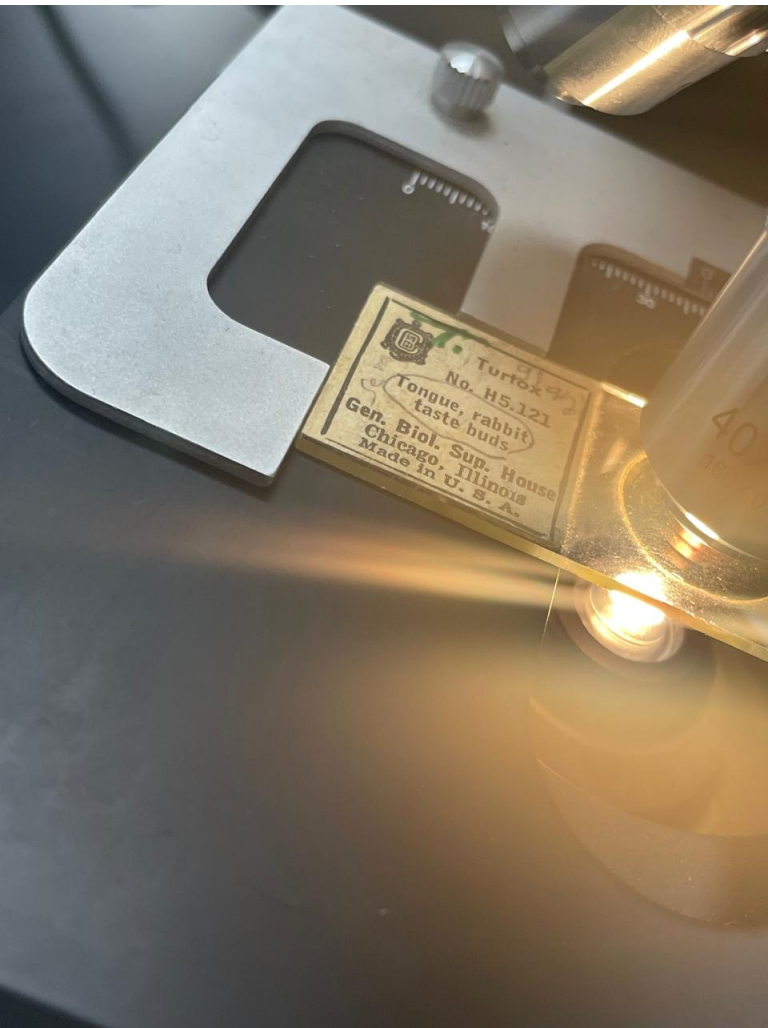
X Papilla  
muscle  
gland  
duct  
serous  
+ granule

low









Turtex

No. H5.121

Tongue, rabbit  
taste buds

Gen. Biol. Sup. House  
Chicago, Illinois  
Made in U. S. A.

40  
15