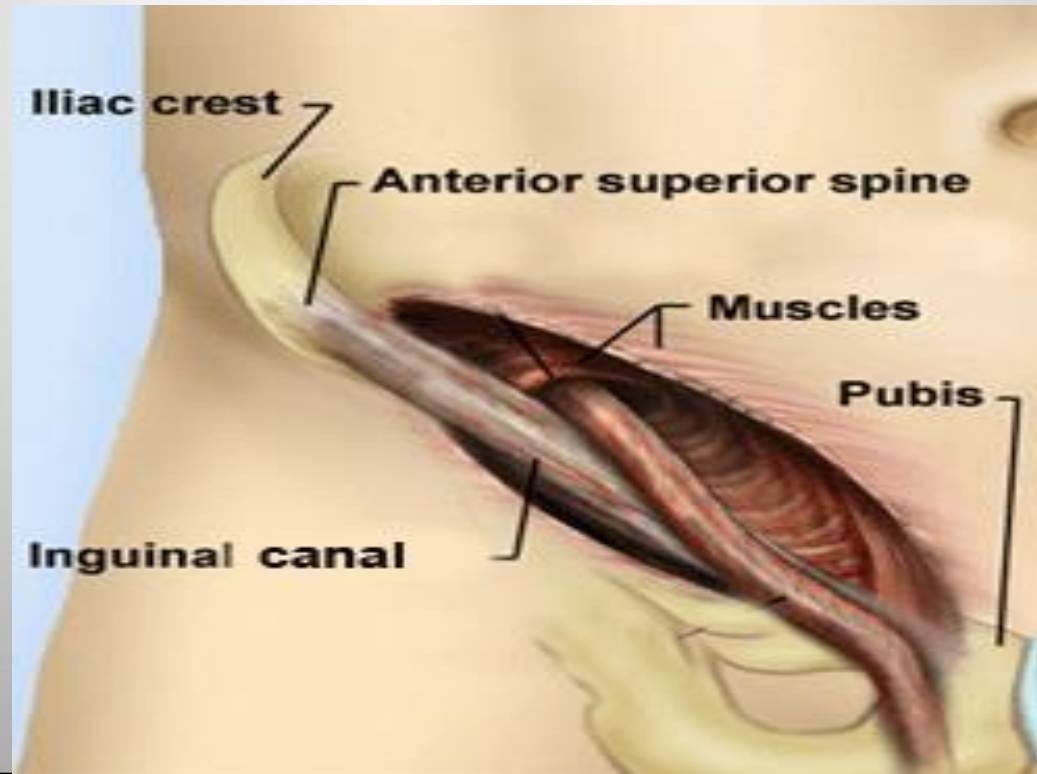
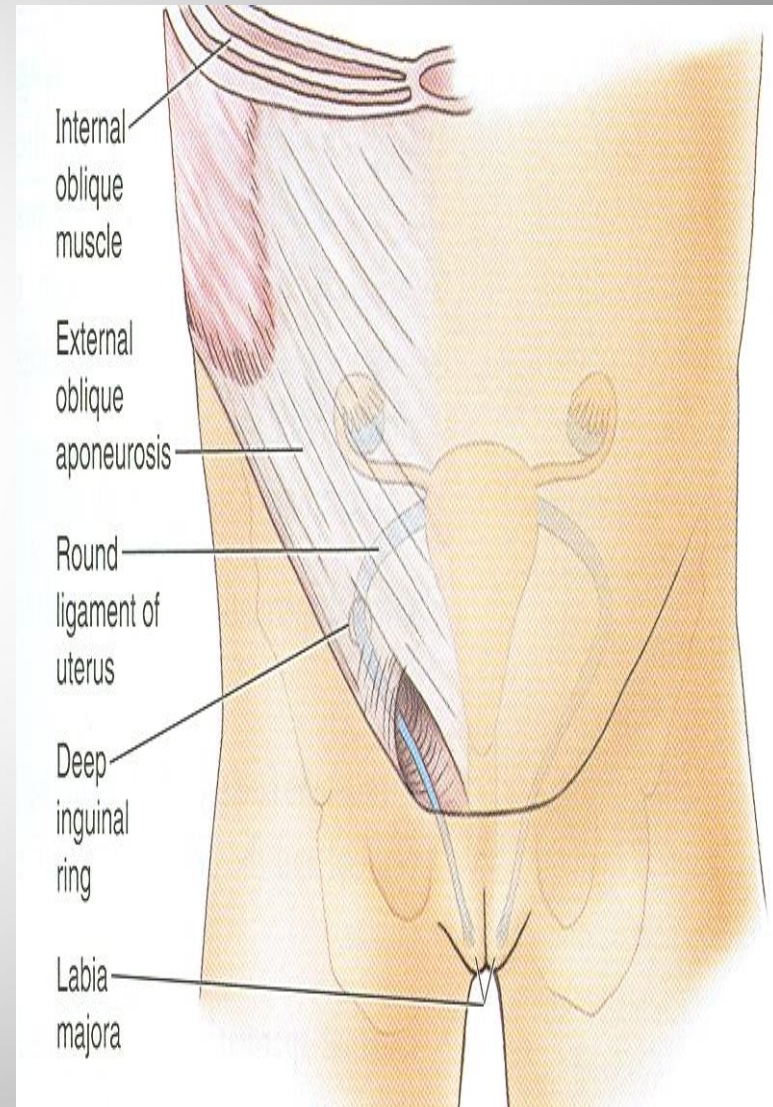


Inguinal canal



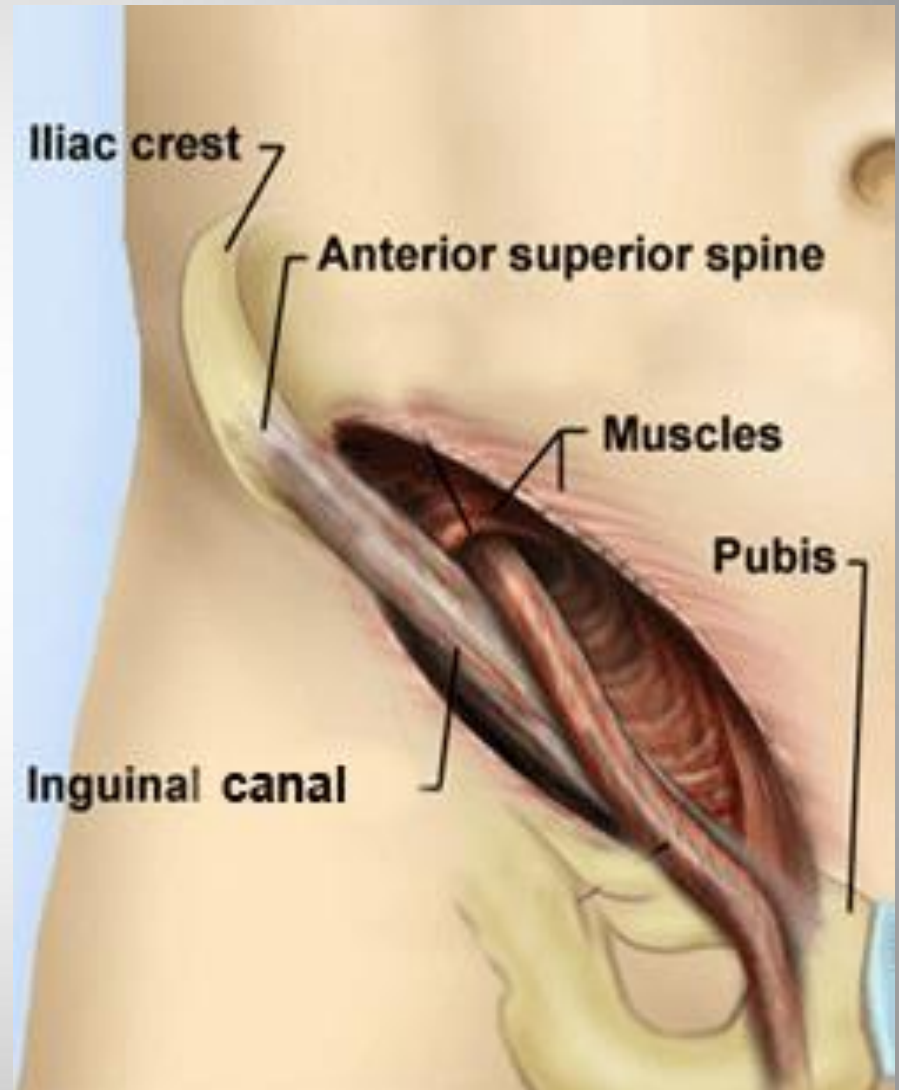
Inguinal Canal

- It is an oblique passage through the lower part of the anterior abdominal wall
- Present in both sexes
- It allows structures to pass to and from the testis to the abdomen in males
- In females it permits the passage of the round ligament of the uterus from the uterus to the labium majus
- Transmits ilioinguinal nerve in both sexes



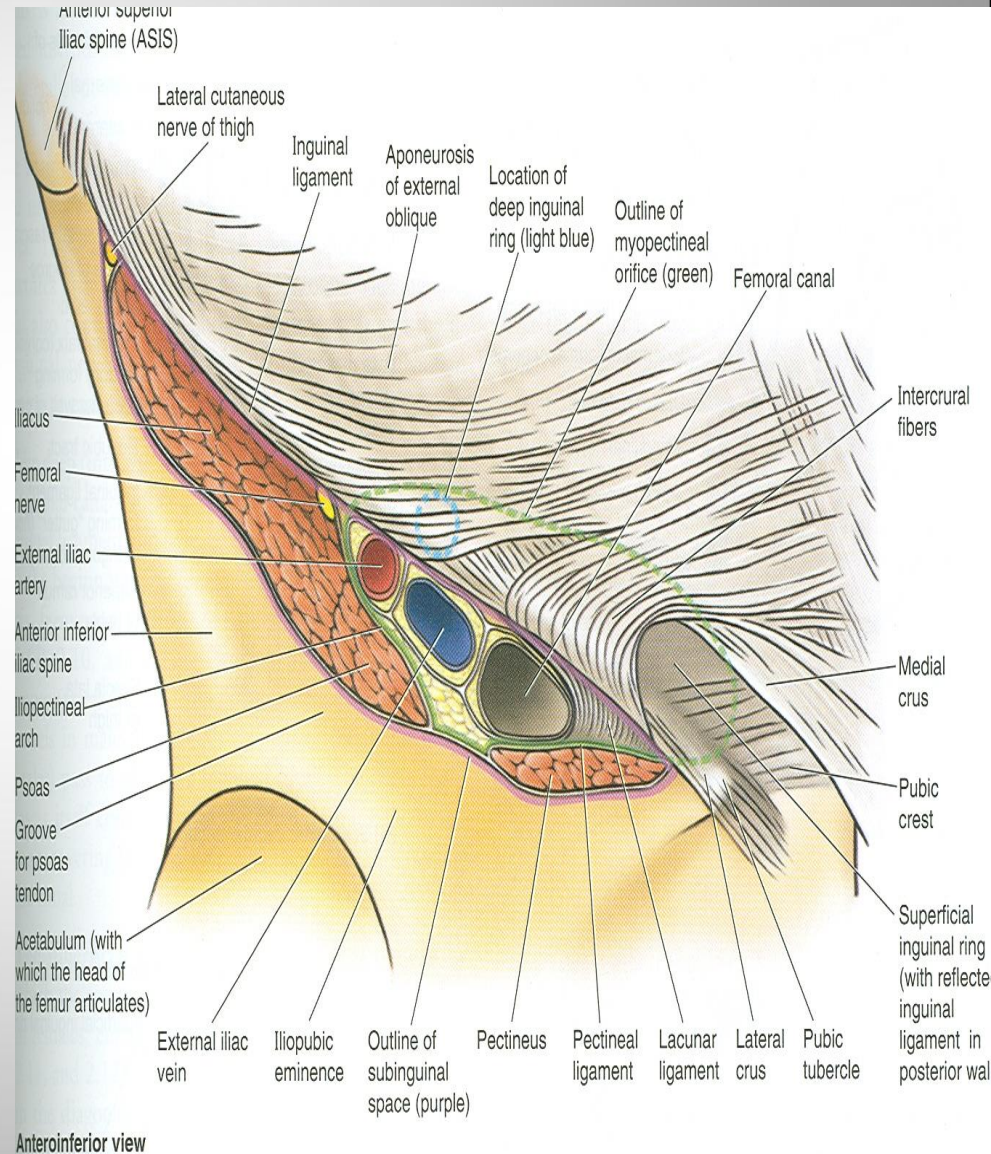
Inguinal Canal

- It is about 1 ½ inches or 4cm long in the adults
- Extends from the deep inguinal ring downward and medially to the superficial inguinal ring
- Lies parallel to and immediately above the inguinal ligament
- In the newborn child, the deep ring lies almost directly posterior to the superficial ring



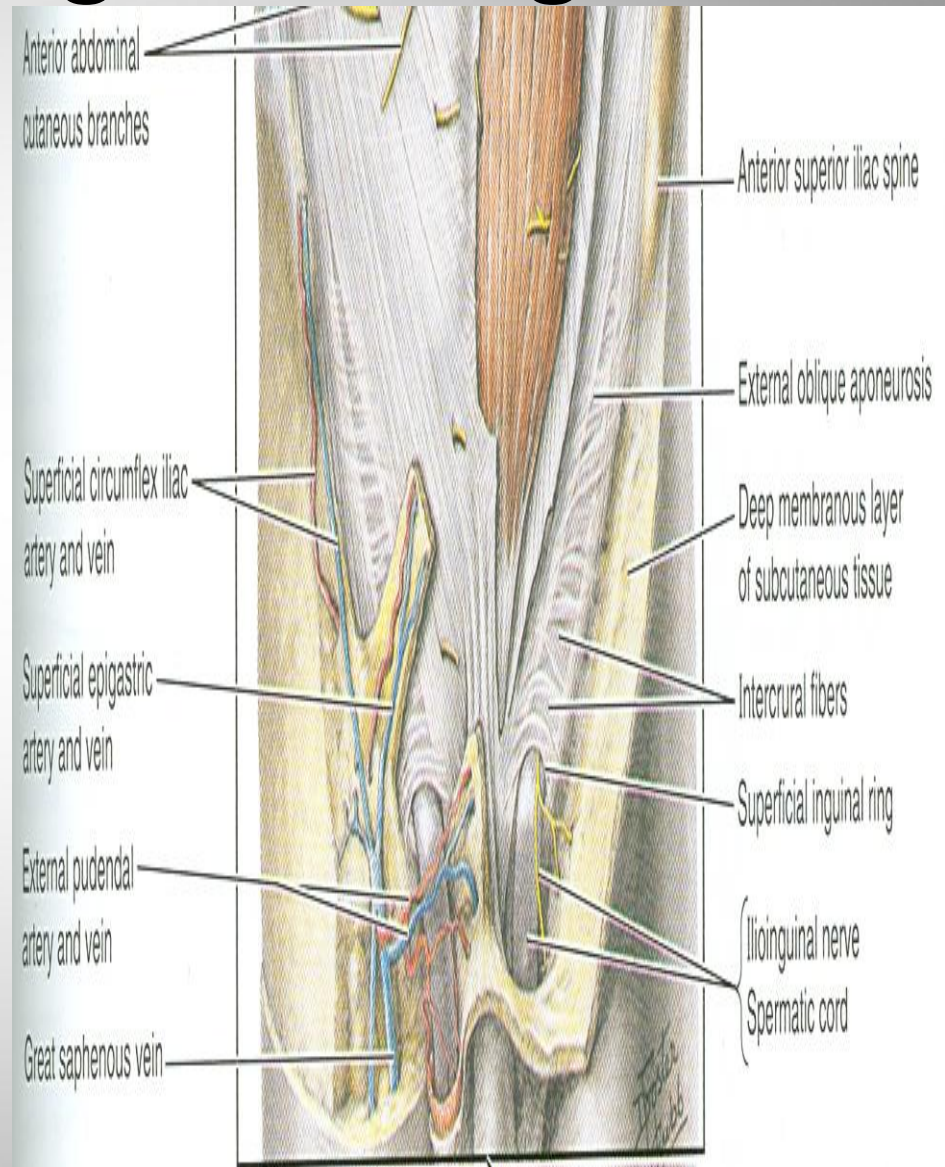
Deep Inguinal Ring

- Is an oval opening in the fascia transversalis
- Lies about ½ inch (1.3cm) above the inguinal ligament midway between the anterosuperior iliac spine and the symphysis pubis
- Margins of the ring give attachment to the internal spermatic fascia



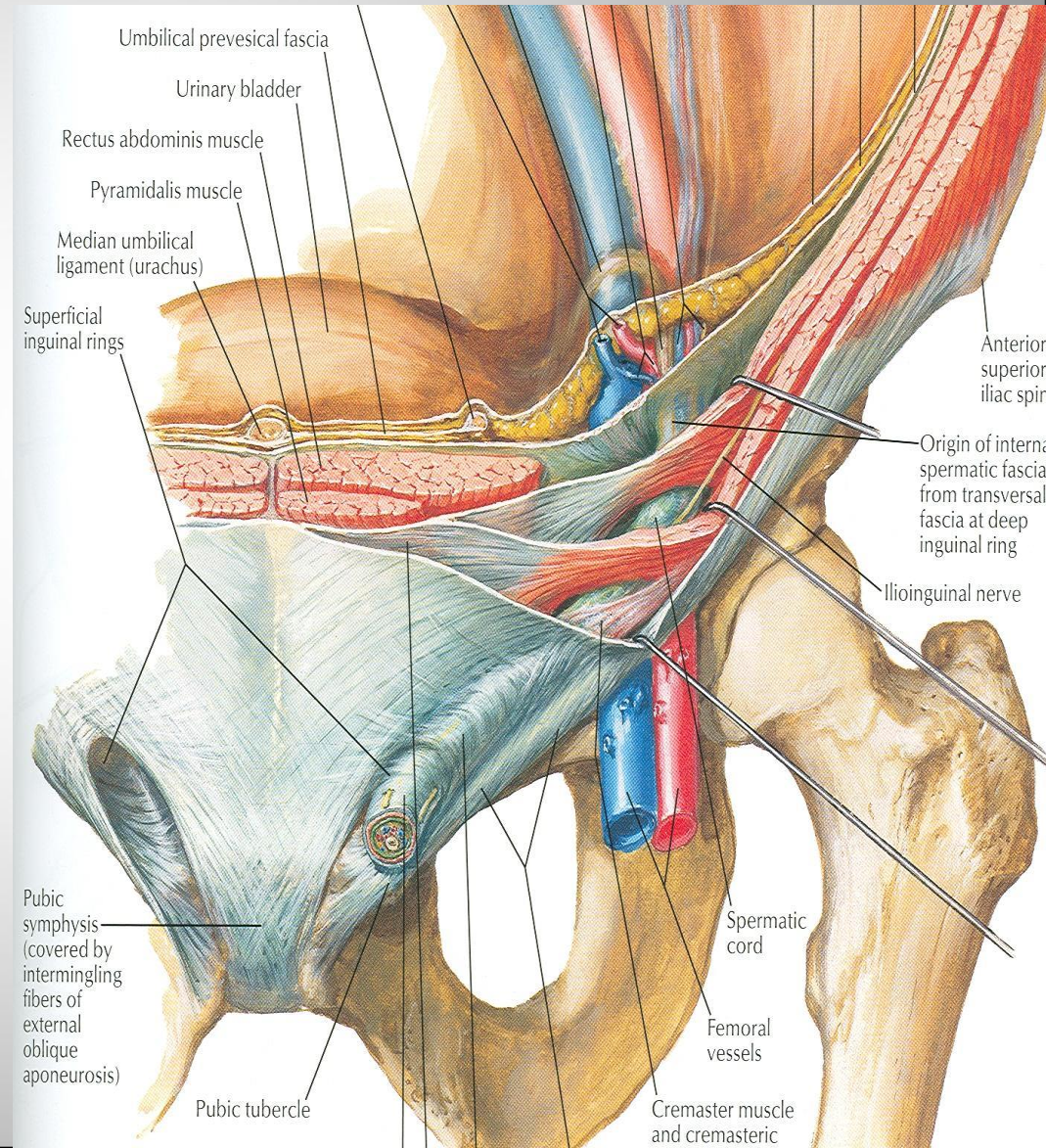
Superficial Inguinal Ring

- Triangular in shape
- Defect in the aponeurosis of the external oblique muscle
- Lies immediately above and medial to the pubic tubercle
- Its margins some times called crura (Med & lat crus), give attachment to the external spermatic fascia



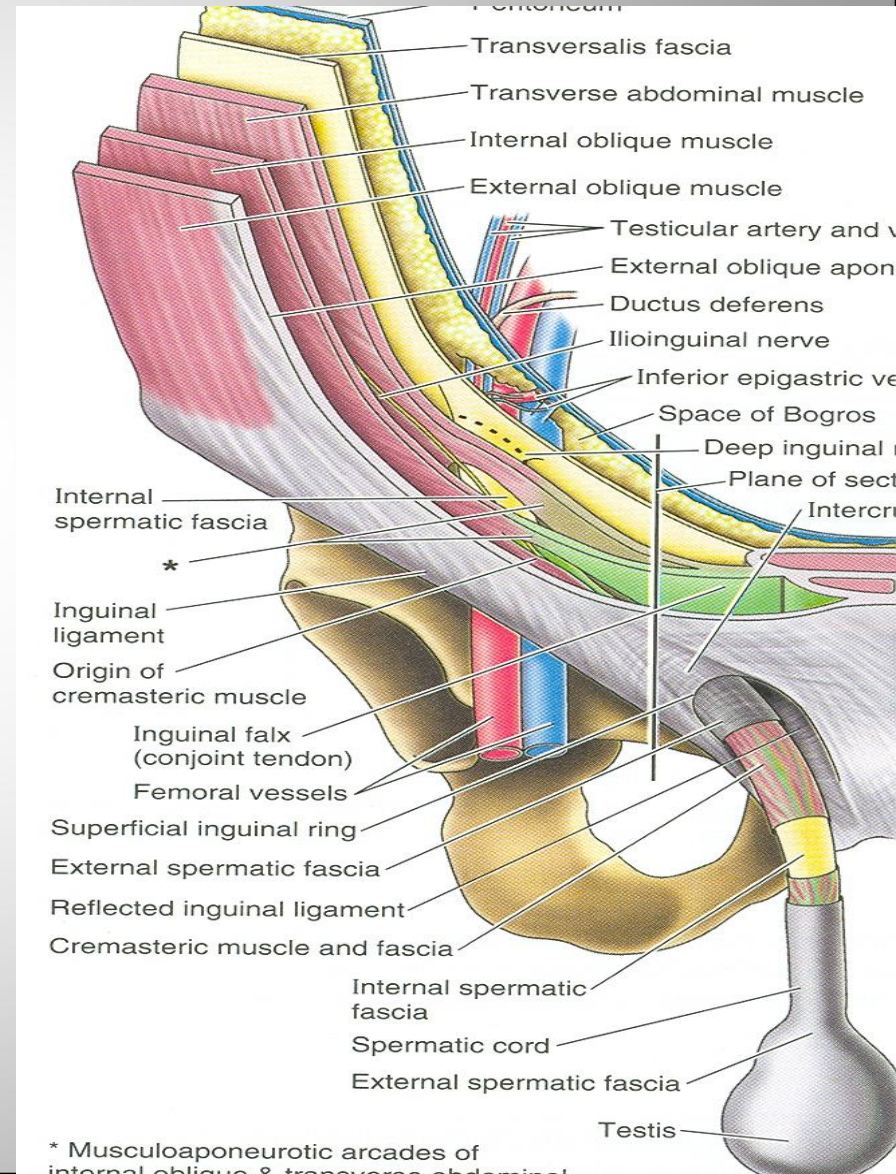
Anterior Wall of Inguinal Canal

- It is formed along its entire length by aponeurosis of the external oblique muscle
- It is reinforced in its lateral third by the origin of the internal oblique from the inguinal ligament
- This wall is strongest where it lies opposite the weakest part of posterior wall, that is deep inguinal ring



Posterior Wall of Inguinal Canal

- It is formed along its entire length by the fascia transversalis
- It is reinforced in its medial third by conjoint tendon, the common tendon of insertion of internal oblique and transversus, attached to the pubic crest and pectineal line
- This wall is strongest where it lies opposite the weakest part of the anterior wall, that is superficial inguinal ring



Inferior Wall of Inguinal Canal = floor

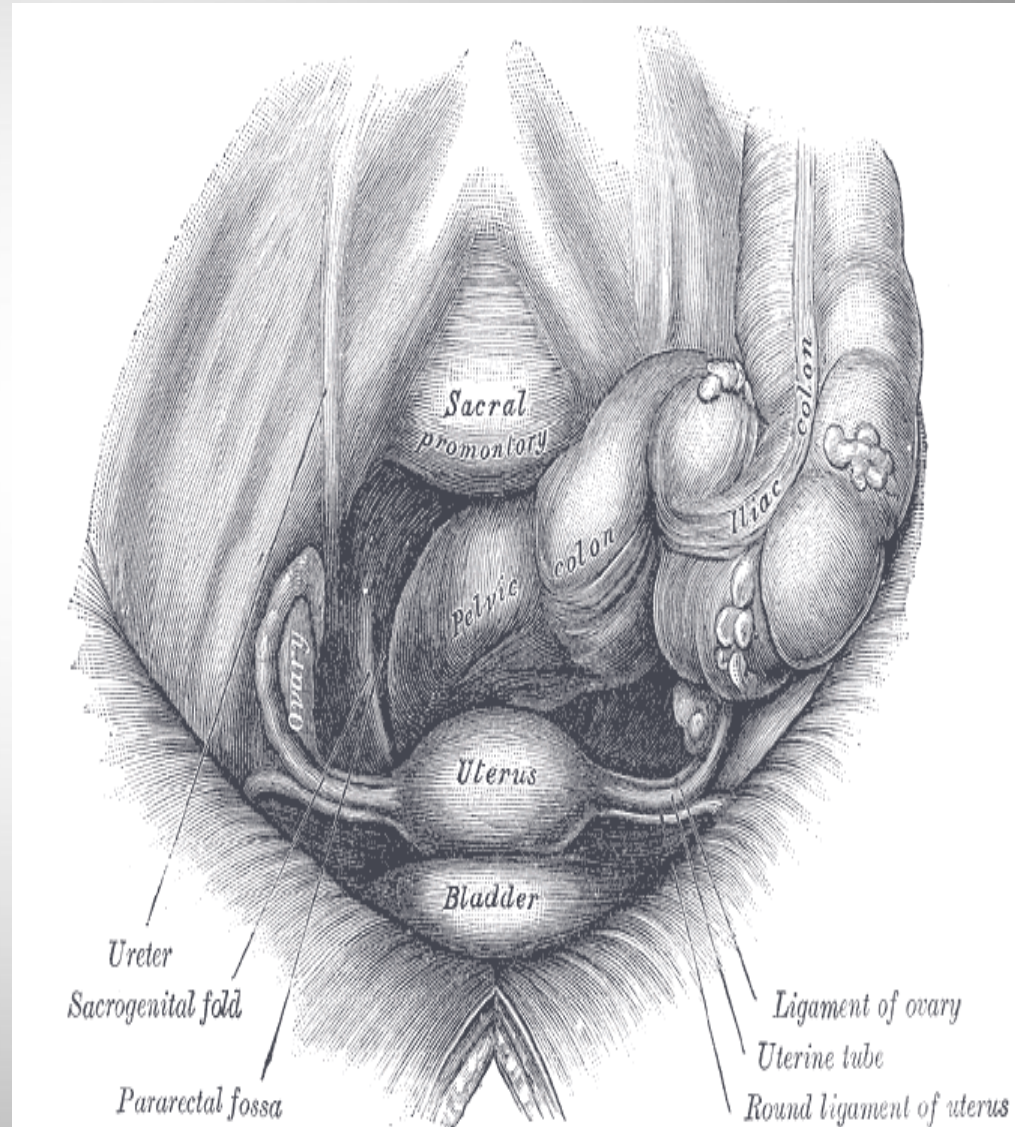
- It is formed by the rolled-under inferior edge of the aponeurosis of the external oblique muscle called inguinal ligament and at its medial end, the lacunar ligament
- Superior Wall of Inguinal Canal = Roof
- It is formed by the arching lowest fibers of the internal oblique and transversus abdominis muscles

Functions of Inguinal Canal

- It allows structures of spermatic cord to pass to and from the testis to the abdomen in male
- Permits the passage of round ligament of uterus from the uterus to the labium majus in female

Contents of inguinal canal

- Spermatic cord & its contents in male
- Round ligament in female
- Genital branch of genitofemoral nerve
- Ilioinguinal nerve: Enter the canal through the posterior wall

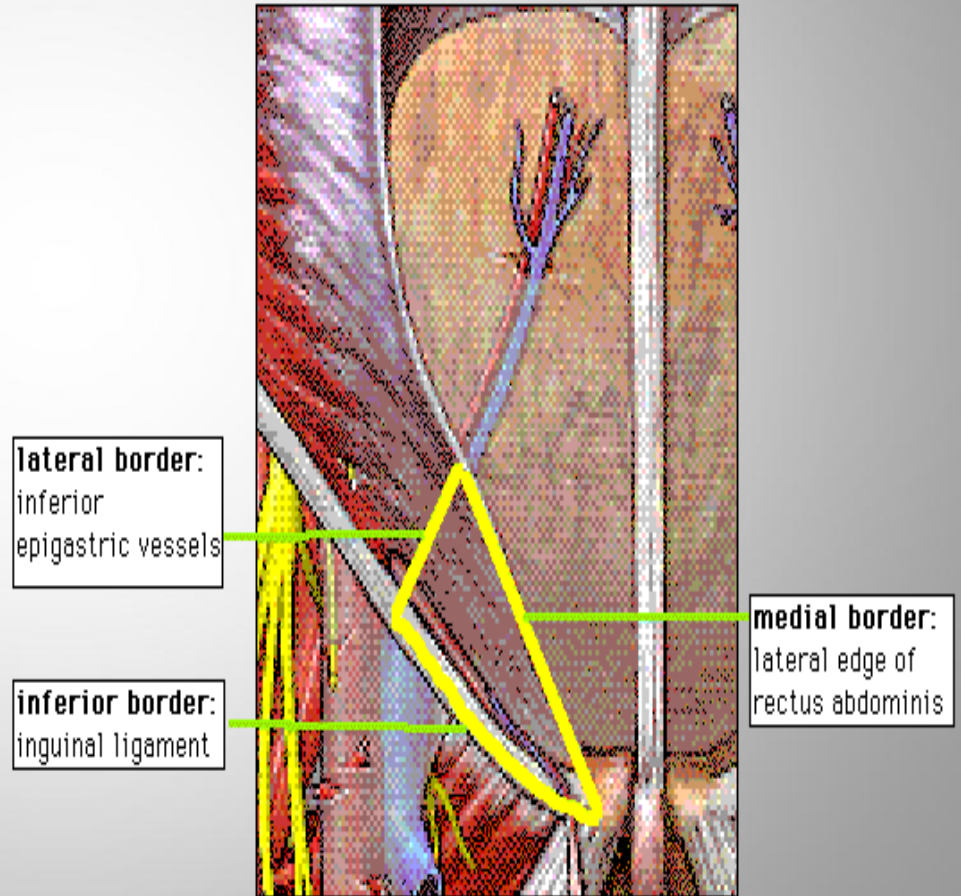


Inguinal triangle

- Region of abdominal wall

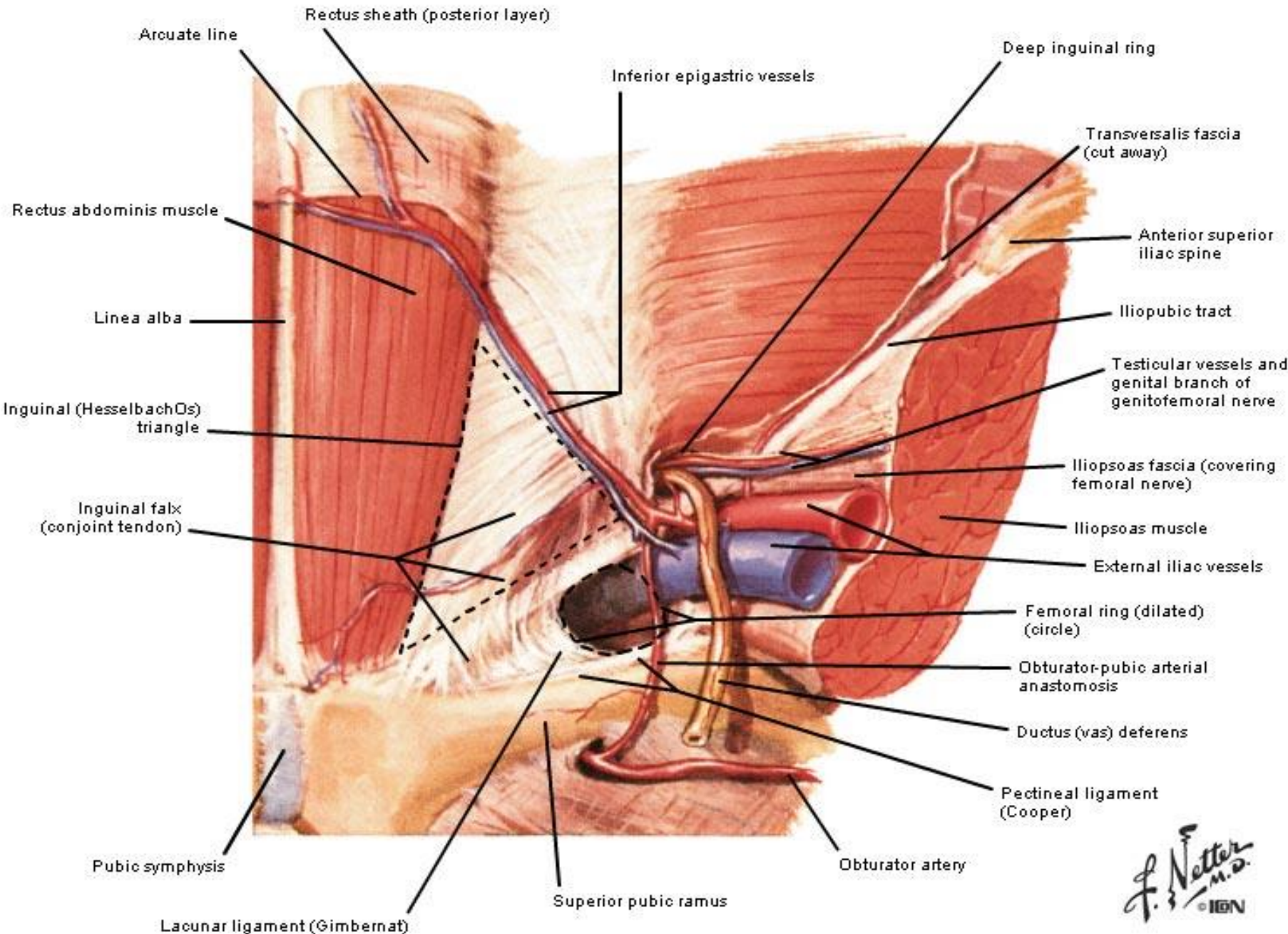
Borders

- Medial border: Lateral margin of the rectus sheath, also called linea semilunaris
- Superolateral border: Inferior epigastric vessels
- Inferior border: Inguinal ligament



Inguinal Region

Dissection - Posterior (Internal) View



Arcuate line

Rectus sheath (posterior layer)

Inferior epigastric vessels

Deep inguinal ring

Rectus abdominis muscle

Transversalis fascia (cut away)

Anterior superior iliac spine

Linea alba

Iliopubic tract

Testicular vessels and genital branch of genitofemoral nerve

Inguinal (Hesselbach's) triangle

Iliopsoas fascia (covering femoral nerve)

Iliopsoas muscle

Inguinal falx (conjoint tendon)

External iliac vessels

Femoral ring (dilated) (circle)

Obturator-pubic arterial anastomosis

Ductus (vas) deferens

Pectineal ligament (Cooper)

Pubic symphysis

Obturator artery

Superior pubic ramus

Lacunar ligament (Gimbernat)

F. Netter M.D.
© IGV

Spermatic Cord

- It is a collection of structures that pass through the inguinal canal to and from the testis
- It is covered with three concentric layers of fascia derived from the layers of anterior abdominal wall
- It begins at the deep inguinal ring lateral to the inferior epigastric artery and ends at the testis

Structures of Spermatic Cord

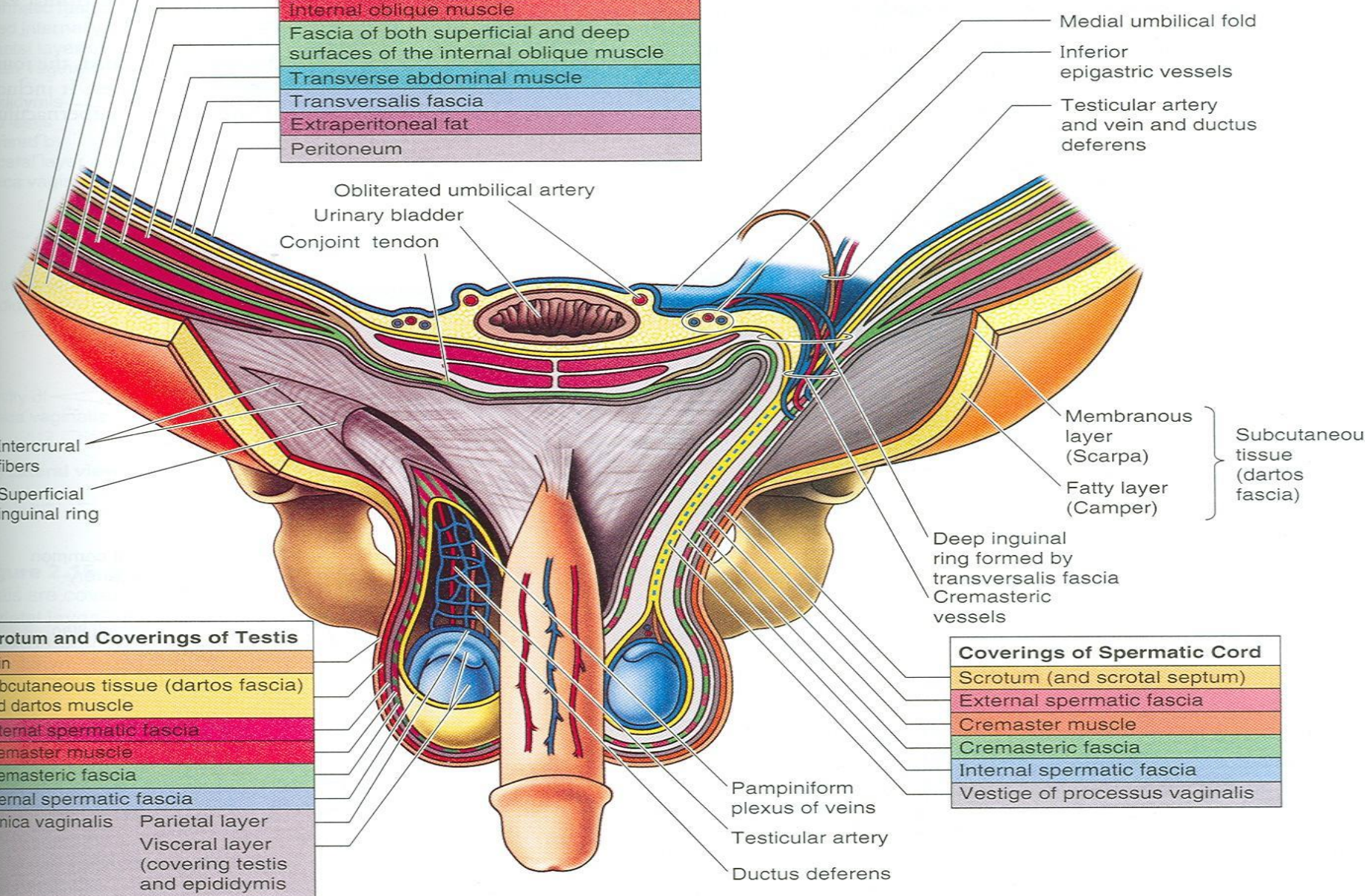
- Vas deferens
- Testicular artery and vein
- Testicular lymph vessels
- Autonomic nerves
- Processus vaginalis
- Cremasteric artery
- Artery of the vas deference
- Genital branch of genitofemoral nerve

Covering of the Spermatic Cord

- The covering of the spermatic cord are three concentric layers of fascia derived from the layers of the anterior abdominal wall
- Each covering is acquired as the processus vaginalis descends into the scrotum through the layers of the abdominal wall
- External Spermatic fascia: Is derived from the external oblique aponeurosis and attached to the margins of the superficial inguinal ring
- Cremasteric Fascia: Is derived from the internal oblique muscle
- Internal Spermatic Fascia: Is derived from the fascia transversalis and attached to the margins of deep inguinal ring

Corresponding Layers of the Anterior Abdominal Wall, Scrotum, and Spermatic Cord

Layers of Anterior Abdominal Wall	
Skin	
Subcutaneous tissue or superficial fascia	
External oblique muscle	
Internal oblique muscle	
Fascia of both superficial and deep surfaces of the internal oblique muscle	
Transverse abdominal muscle	
Transversalis fascia	
Extraperitoneal fat	
Peritoneum	



Scrotum and Coverings of Testis	
Skin	
Subcutaneous tissue (dartos fascia) and dartos muscle	
External spermatic fascia	
Cremaster muscle	
Cremasteric fascia	
Internal spermatic fascia	
Tunica vaginalis	Parietal layer
	Visceral layer (covering testis and epididymis)

Coverings of Spermatic Cord	
Scrotum (and scrotal septum)	
External spermatic fascia	
Cremaster muscle	
Cremasteric fascia	
Internal spermatic fascia	
Vestige of processus vaginalis	

Vas Deferens

- It is a cord like structure
- Can be palpated between finger and thumb in the upper part of the scrotum
- It is a thick walled muscular duct that transport spermatozoa from the epididymis to the prostatic urethra

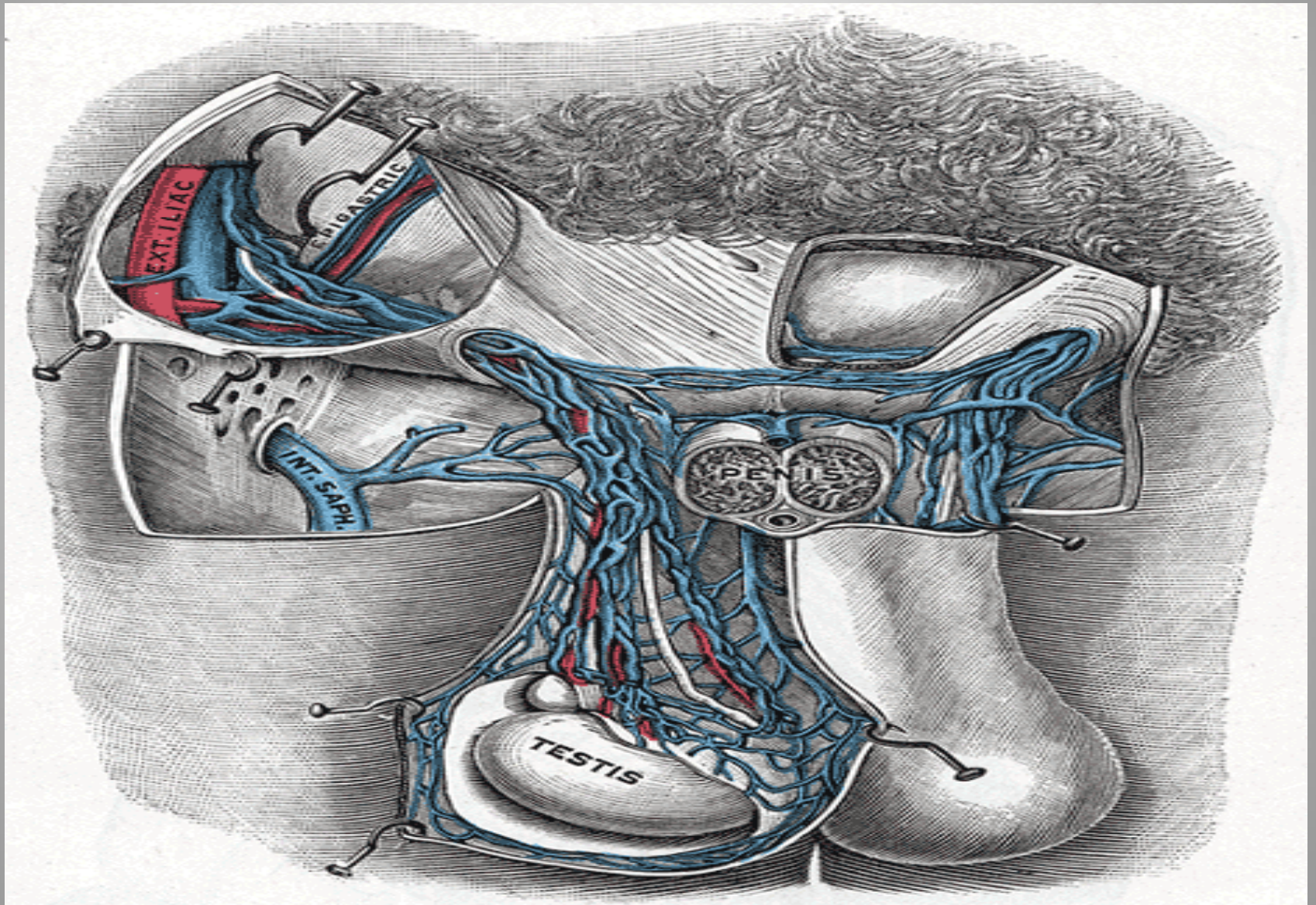
Testicular Artery

- It is a branch of abdominal aorta at level of L2
- It is long and slender
- Descends on the posterior abdominal wall
- It traverses the inguinal canal and supplies the testis and the epididymis

Testicular Veins

- These are the extensive venous plexus, the pampiniform plexus
- Leaves the posterior border of the testis
- As the plexus ascends, it becomes reduced in size so that at about the level of deep inguinal ring, a single testicular vein is formed
- Drains into left renal vein on left side and inferior vena cava on right side

Testicular artery & vein



Autonomic nerve & Genitofemoral nerve

Autonomic nerves

- Sympathetic fibers run with testicular artery from renal or aortic sympathetic plexuses
- Afferent sensory nerve

Genital branch of the genitofemoral nerve

- Its root L1& L2
- Supply the cremasteric muscle

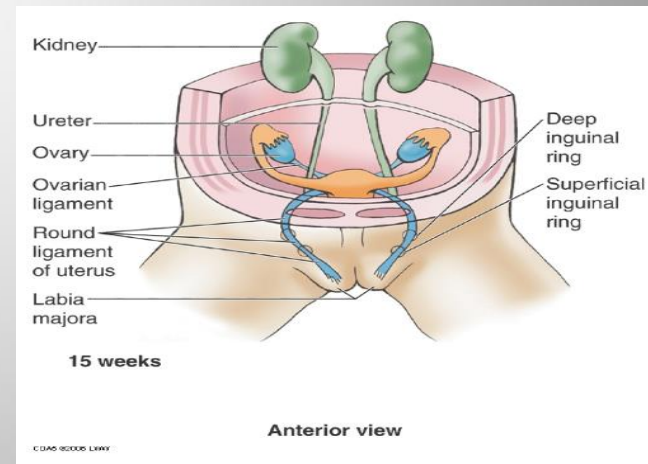
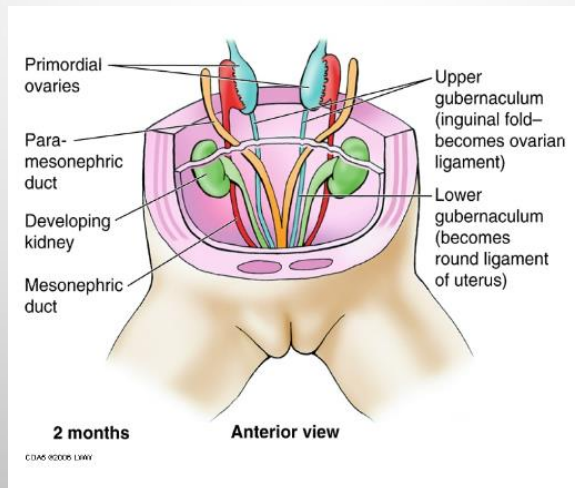
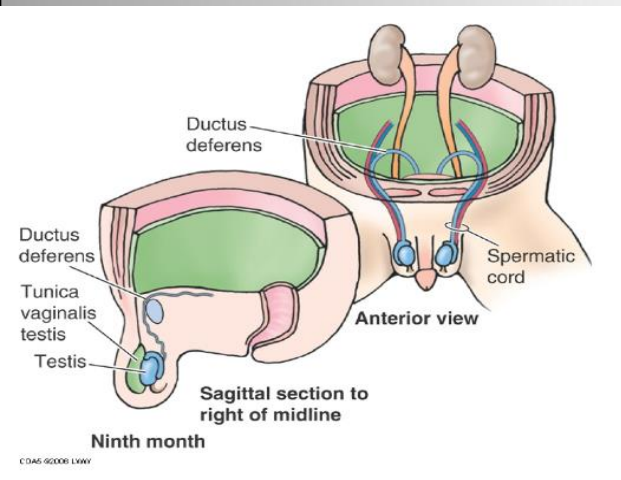
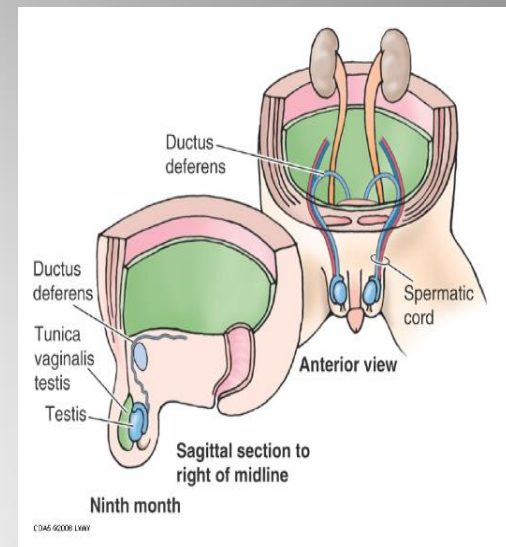
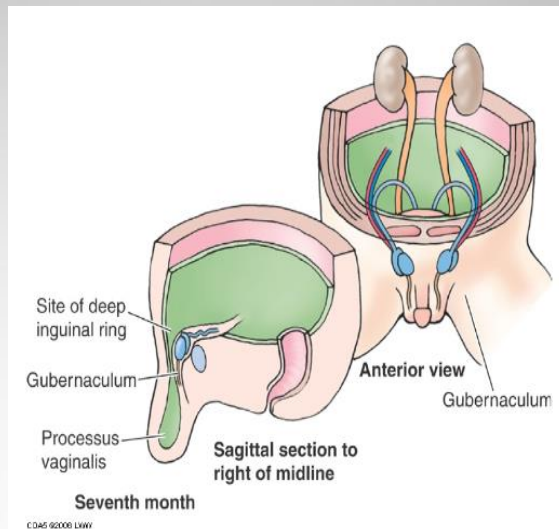
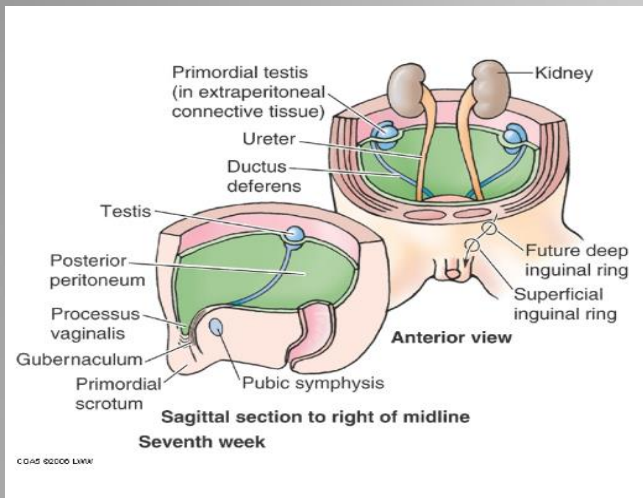
Testicular lymphatic vessels

- Ascend through the inguinal canal
- Passes up over the post. Abdominal wall
- Reach the lumbar (Para-aortic) lymph nodes on each side of the aorta at level L1

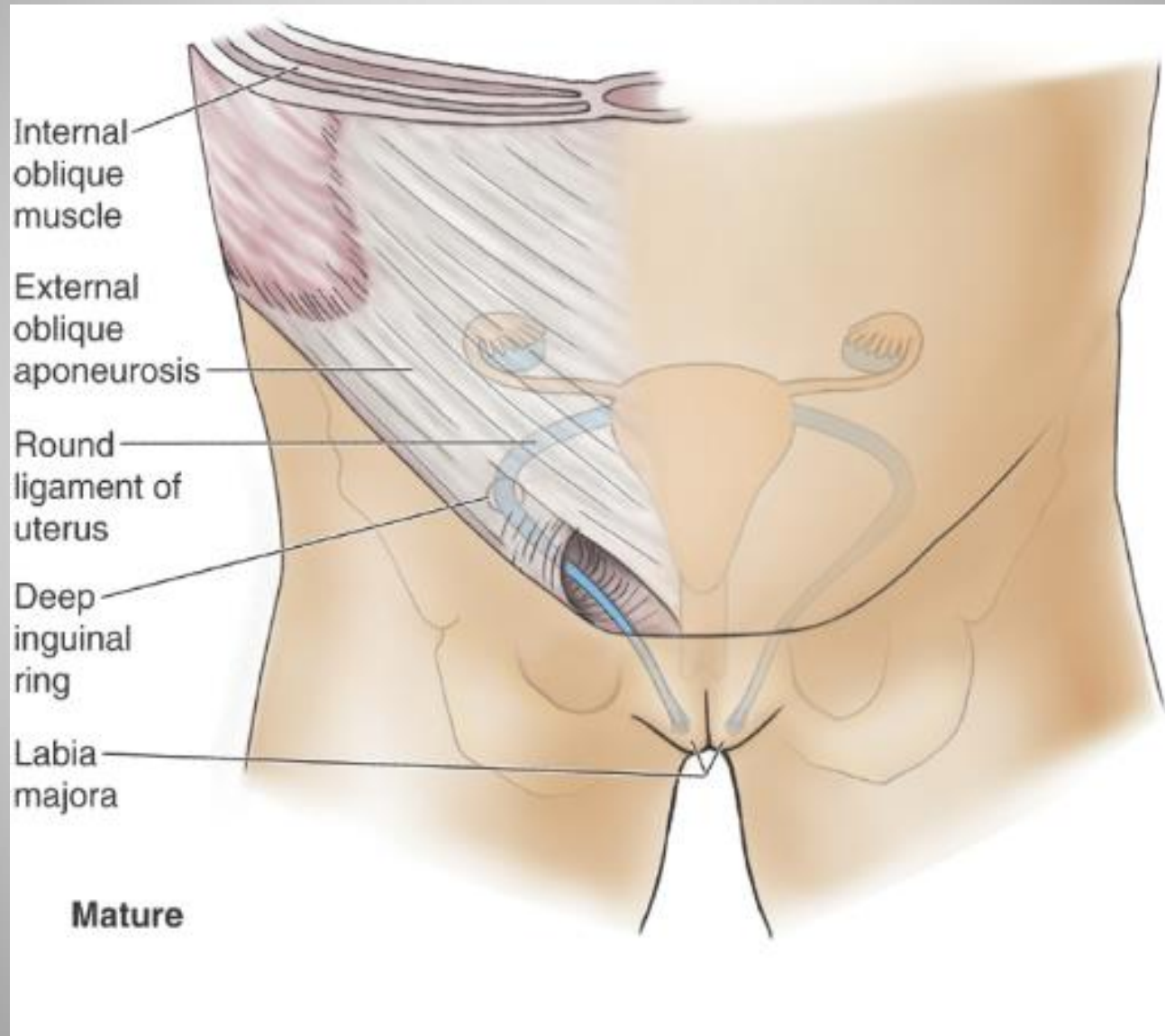
Processus vaginalis

- An out pouching of peritoneum that in the fetus is responsible for the formation of the inguinal canal
- The remains of the processus vaginalis causes the indirect hernia

Developing of process vaginalis



Developing of process vaginalis.....cont



Inguinal Hernia

- A hernia is the protrusion of part of the abdominal contents beyond the normal confines of the abdominal wall
- Consists of three parts: the sac, contents of the sac, covering of the sac
- Hernial coverings are formed from the layers of the abdominal wall through which the hernial sac passes

Neck of hernial sac

Inferior epigastric vessels

Origin of internal spermatic fascia from transversalis fascia at deep inguinal ring

Periton

Extraperito fascia

Transversalis fa

Hook retracting transvers abdominis muscle

Hook retracting intern oblique muscle

Hook retracting exte oblique aponeurosis

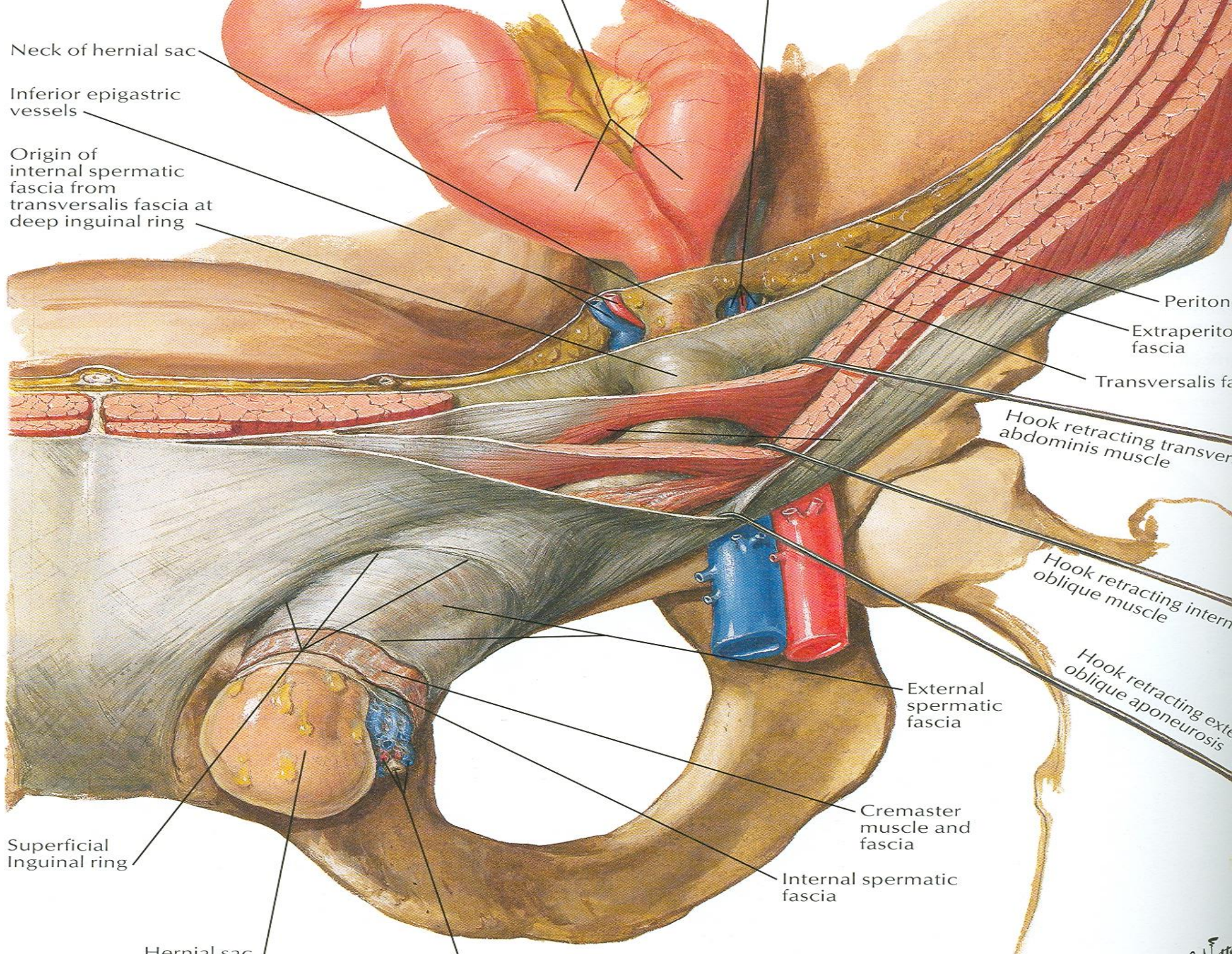
External spermatic fascia

Cremaster muscle and fascia

Internal spermatic fascia

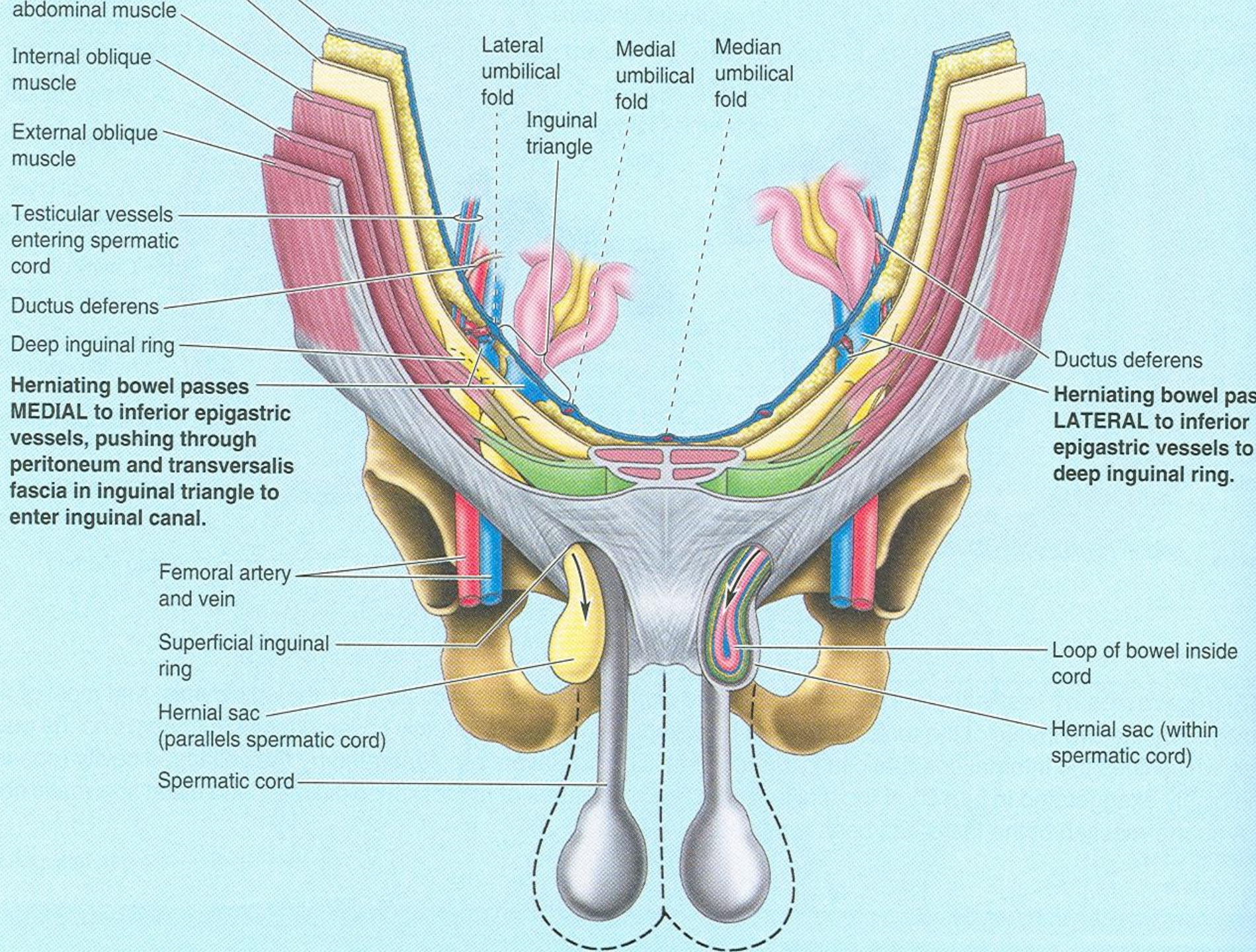
Superficial Inguinal ring

Hernial sac



Indirect Inguinal Hernia

- It is the most common form of hernia
- Is believed to be congenital in origin
- The hernial sac is remains of processus vaginalis
- Enters the inguinal canal through the deep inguinal ring lateral to the inferior epigastric vessels
- It may extend part of the way along the canal or as far as the superficial inguinal ring



Indirect Inguinal Hernia

- If the processus vaginalis has undergone no obliteration, the hernia is complete and extends through the superficial inguinal ring down into the scrotum or labium majus
- Under these circumstances the neck of the hernial sac lies at the deep inguinal ring
- It is 20 times more common in young males than females
- Is more common on the right side(the Rt. testis descends later than the Lt. testis)

Direct Inguinal Hernia

- It composes about 15% of all inguinal hernias
- Common in old men with weak abdominal muscles and rare in women
- Hernial sac bulges forward through the posterior wall of the inguinal canal medial to the inferior epigastric artery
- The neck of the hernial sac is wide

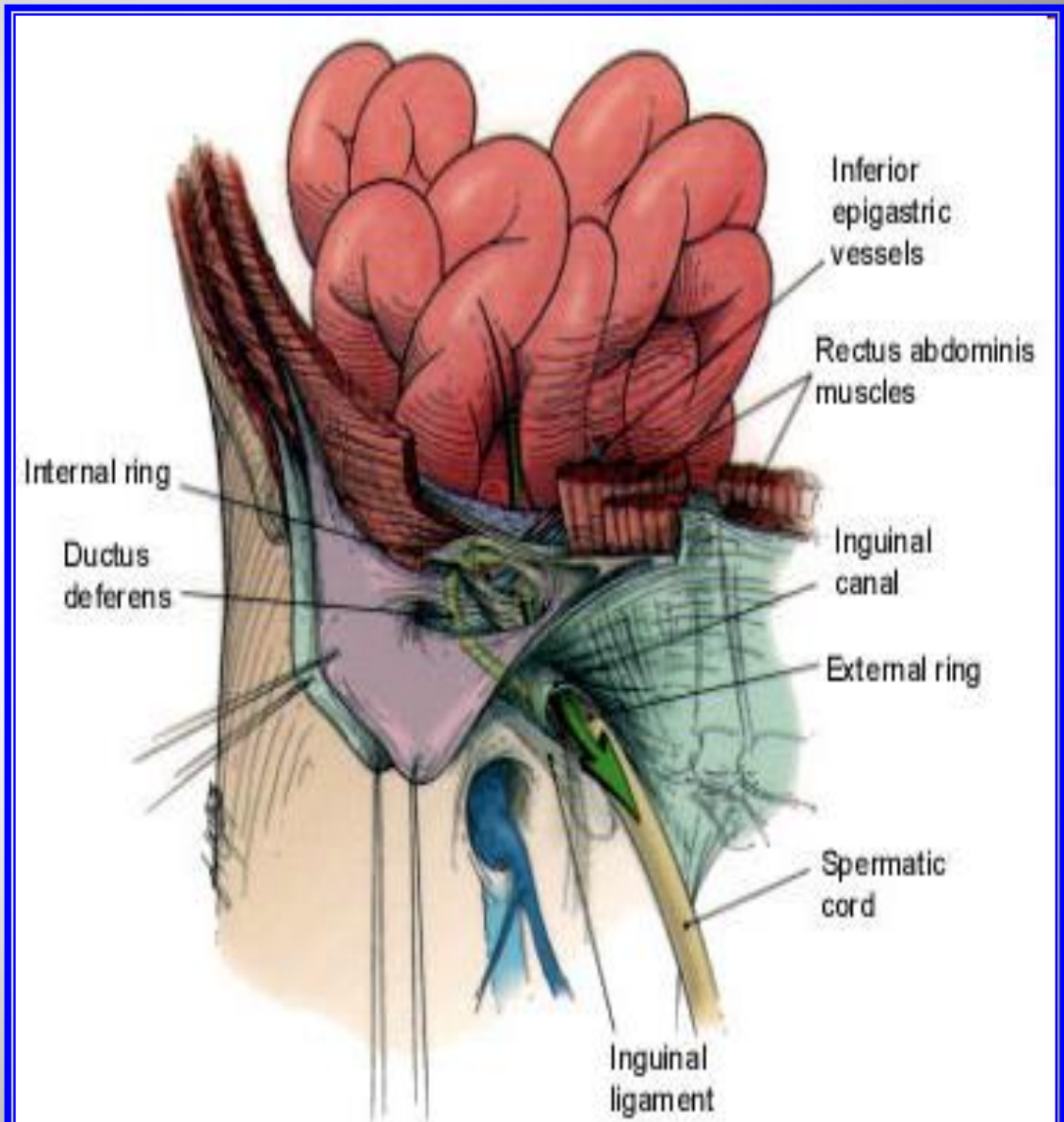
Inguinal Hernia

	Direct	Indirect
Age	Common on old	young
Bilaterally	Usually bilateral	unilateral
Shape	Hemispherical	Oval
Reaches scrotum	never	Can reach the scrotum
Direction of descent	Forwards	Downwards , forwards medially
Reduction	backward	Upward, backward laterally
Relation to inf. epigastric art.	Medially	Laterally
Superficial inguinal ring test	Feel impulse on the side finger	Feel an impulse on the tip of the finger
Deep ring test Reduction of hernia, put thumb over deep ring, ask patient to cough	Hernia appears	Hernia does not appear
Coverings	1- Lat. To lat. Umbilical lig Same as indirection 2- Med. To lat	Skin, superficial fascia, Ex.sp.fascia, cremastic muscle & fascia Int spermatic fascia

Direct Hernia Route

Note:

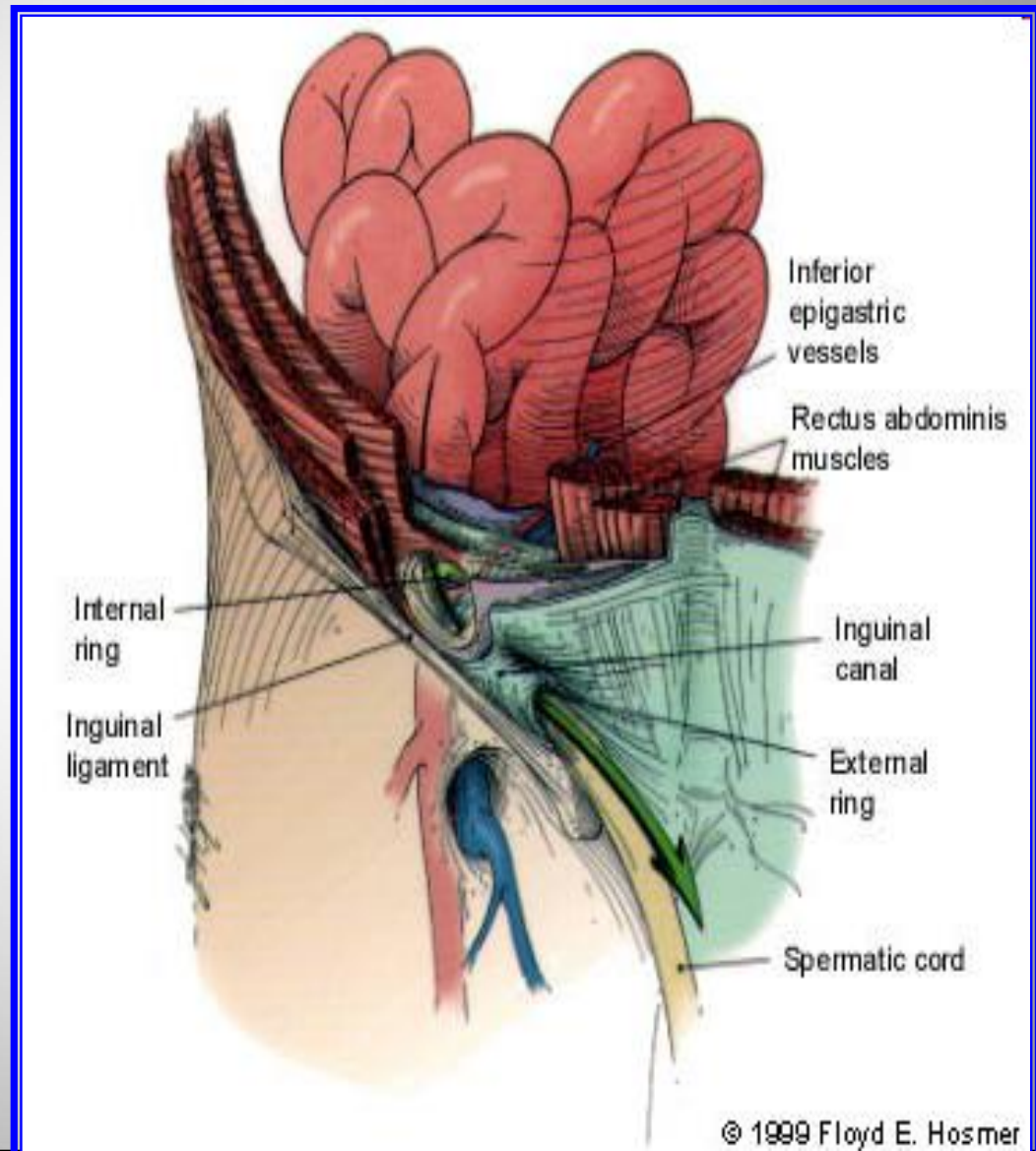
The hernia sac passes directly through inguinal triangle and may disrupt the floor of the inguinal canal.



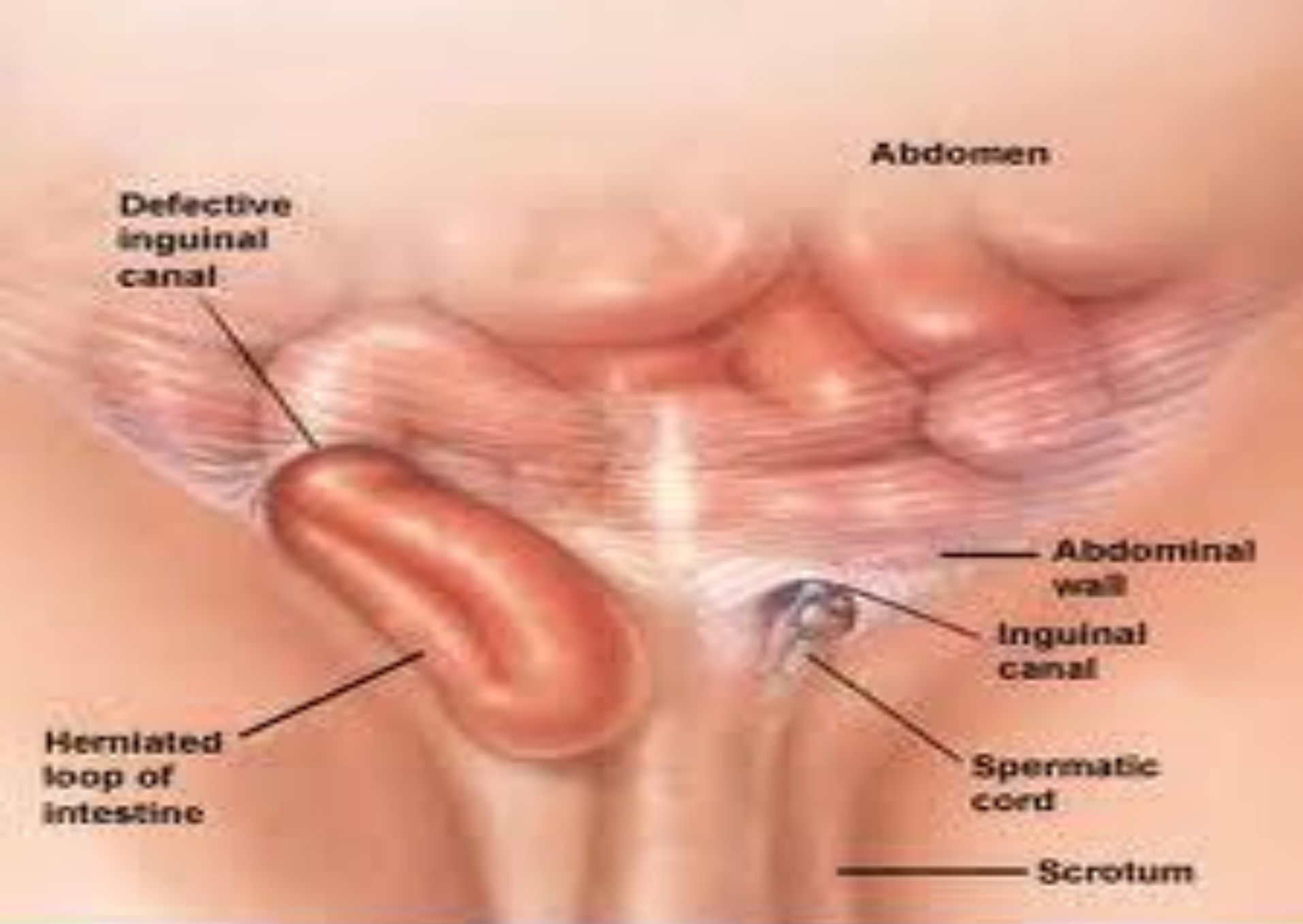
Indirect Hernia Route

Note:

The hernia sac passes outside the boundaries of Hesselbach's triangle (inguinal triangle) and follows the course of the spermatic cord.







Tunica Vaginalis

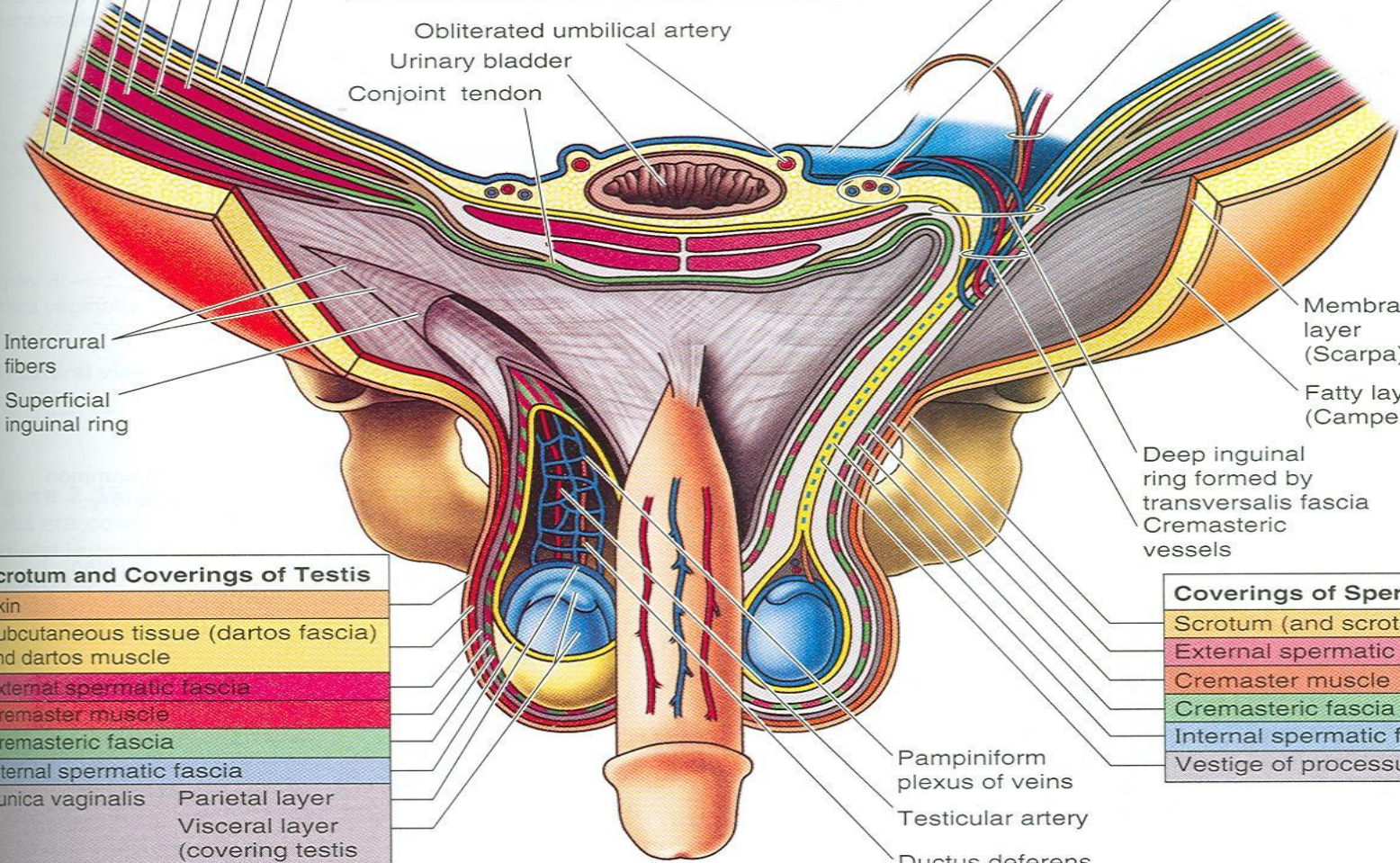
- Lies within the spermatic fasciae
- Covers the anterior, medial and lateral surfaces of each testis
- It is the lower expanded part of the processus vaginalis
- Normally shut off just before birth from the upper part of the processus and the peritoneal cavity

Corresponding Layers of the Anterior Abdominal Wall, Scrotum, and Spermatic Cord

Layers of Anterior Abdominal Wall	
Skin	
Subcutaneous tissue or superficial fascia	
External oblique muscle	
Internal oblique muscle	
Fascia of both superficial and deep surfaces of the internal oblique muscle	
Transverse abdominal muscle	
Transversalis fascia	
Extraperitoneal fat	
Peritoneum	

Obliterated umbilical artery
 Urinary bladder
 Conjoint tendon

Medial umbilical fold
 Inferior epigastric vessels
 Testicular artery and vein and ductus deferens



Intercrural fibers
 Superficial inguinal ring

Membranous layer (Scarpa)
 Fatty layer (Camper)
 Subcutaneous tissue (dartos fascia)

Deep inguinal ring formed by transversalis fascia
 Cremasteric vessels

Scrotum and Coverings of Testis	
Skin	
Subcutaneous tissue (dartos fascia) and dartos muscle	
External spermatic fascia	
Cremaster muscle	
Cremasteric fascia	
Internal spermatic fascia	
Tunica vaginalis	
Parietal layer	
Visceral layer (covering testis and epididymis)	

Coverings of Spermatic Cord	
Scrotum (and scrotal septum)	
External spermatic fascia	
Cremaster muscle	
Cremasteric fascia	
Internal spermatic fascia	
Vestige of processus vaginalis	

Pampiniform plexus of veins
 Testicular artery
 Ductus deferens

Clinical Notes

***Clinical conditions involving the scrotum
and testes***

Varicocele:

- The veins of the pampiniform plexus elongated & dilated
- Lt side more common → venous pressure is higher
- Common in young & adult

- Vasectomy → Infertility

- Processus vaginalis

Upper part → obliterated just before birth

Lower part → Tunica vaginalis

Congenital anomalies of processus vaginalis

- 1- persist → indirect inguinal hernia
- 2- Narrowed → congenital hydrocele
- 3- Obliterated upper & lower part → encysted hydrocele of the cord

Anatomy and histology

- Register your attendance with your university number
- Make sure that the settings of your phone allow tracking location

Go to settings > privacy > location > services > make sure that location services is ON



Thank you