

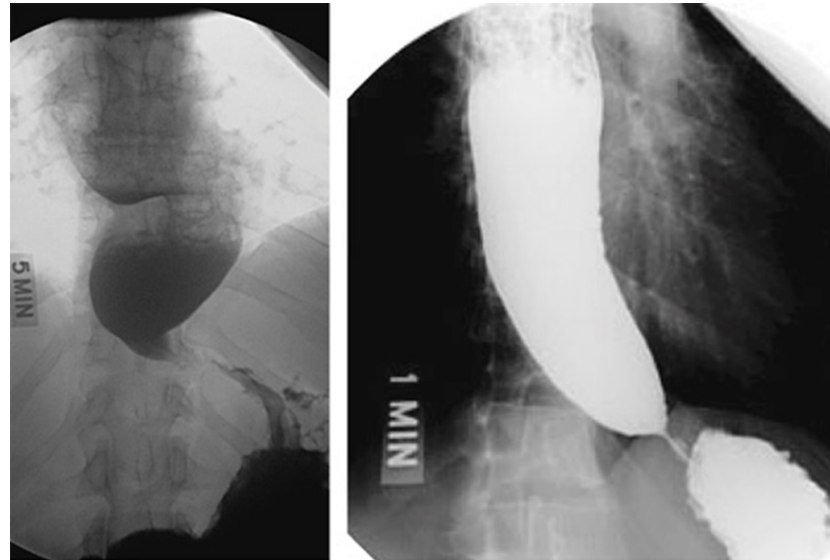
The slide features a minimalist design with several green geometric shapes. On the left, a long, thin green triangle points downwards. On the right, a larger green triangle is composed of two overlapping sections: a lighter green one on top and a darker green one on the bottom. A thin grey line runs diagonally across the right side of the slide, intersecting the green shapes.

Pathology lab slides

Manar Hajeer, MD, FRCPath

The university of Jordan, School of medicine

Achalasia



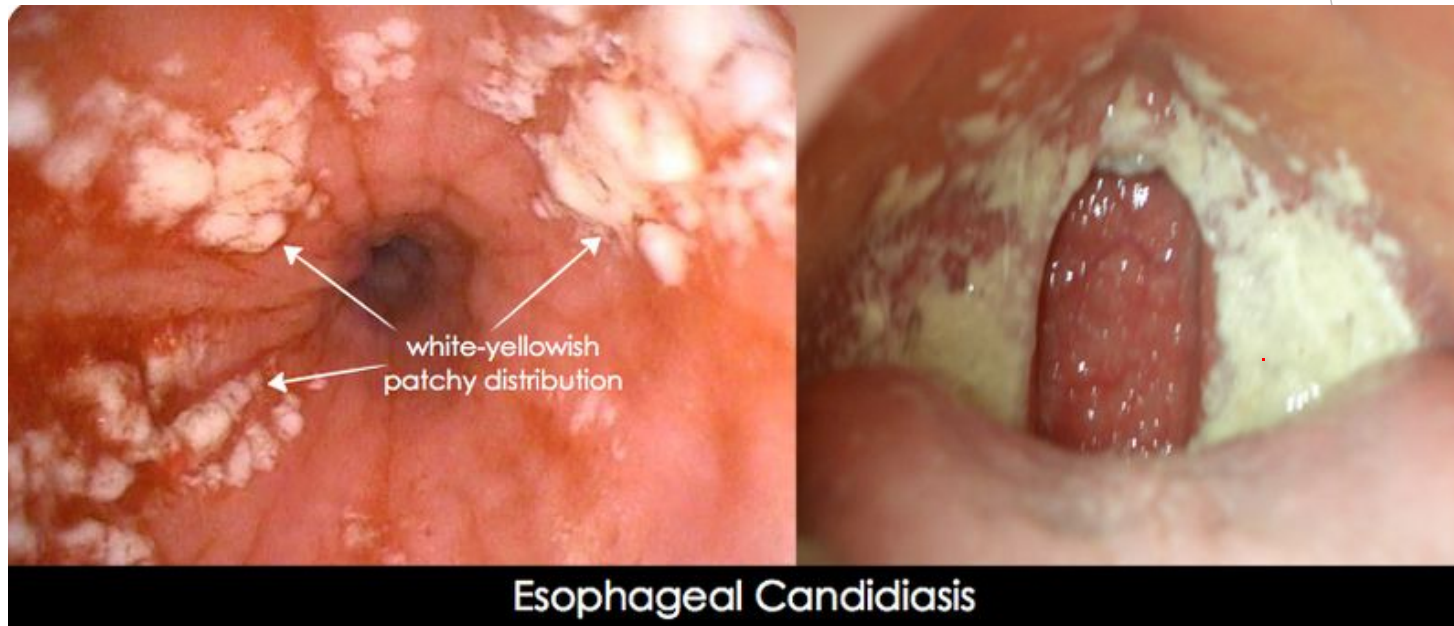
Source: Longo DL, Fauci AS, Kasper DL, Hauser SL, Jameson JL, Loscalzo J: *Harrison's Principles of Internal Medicine, 18th Edition*: www.accessmedicine.com
Copyright © The McGraw-Hill Companies, Inc. All rights reserved.

Esophageal varices

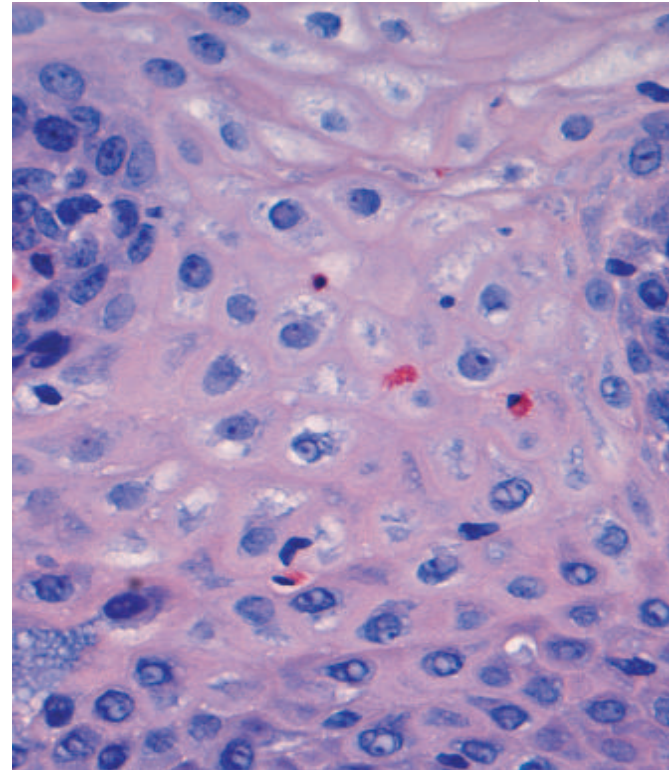
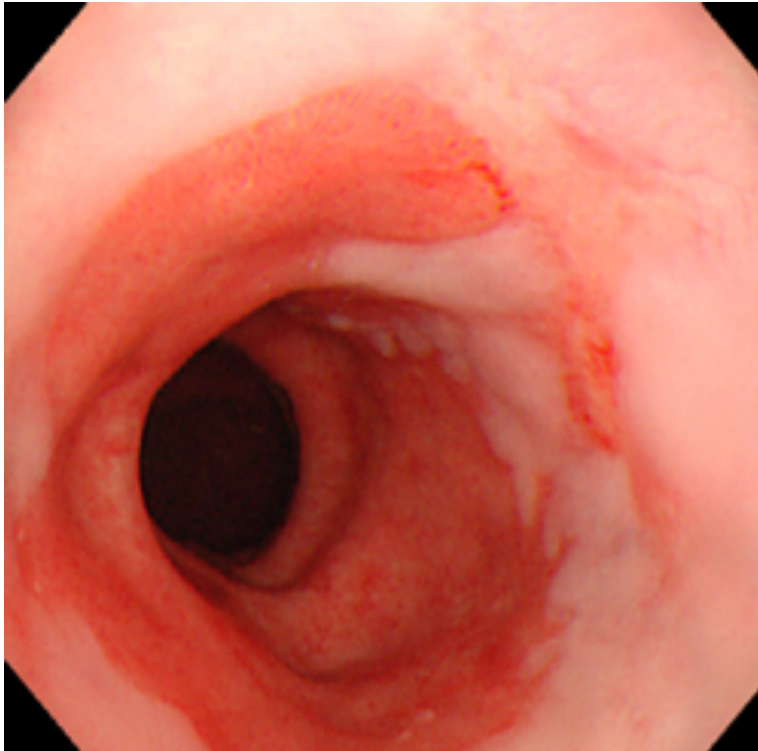
- Medpics - UCSD School of Medicine



Esophageal candidiasis



<https://www.pinterest.com/pin/374291419013418659/>

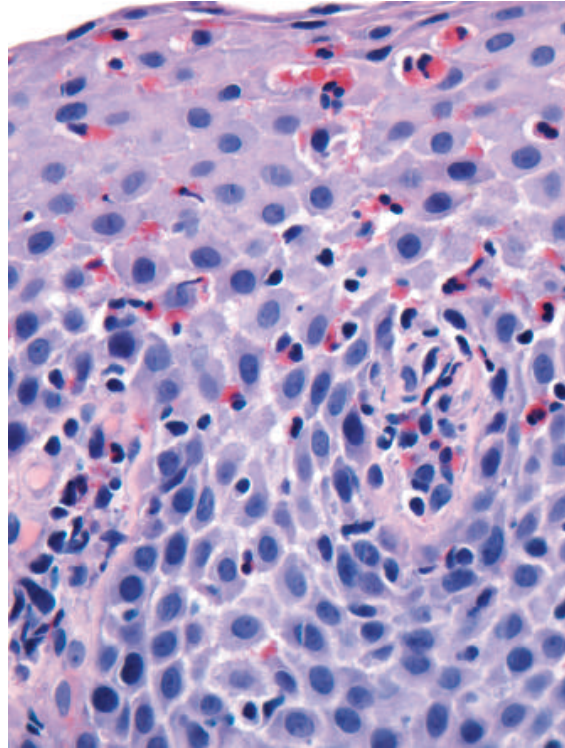
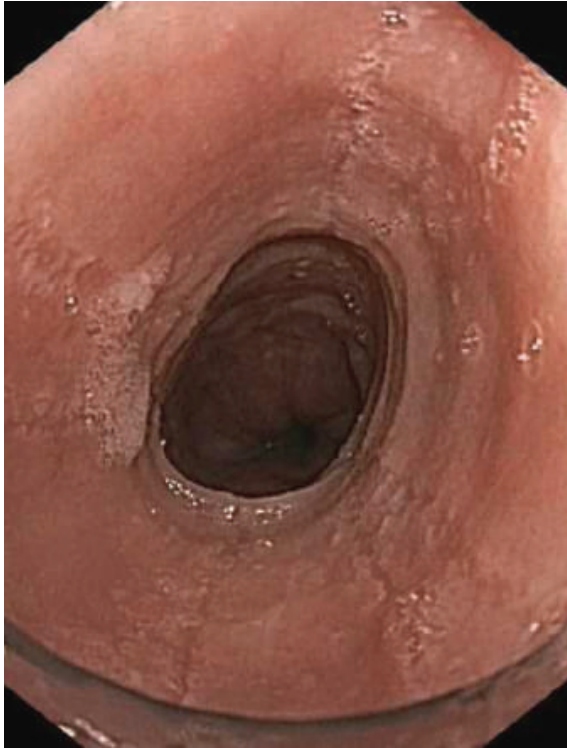


Reflux
esophagitis

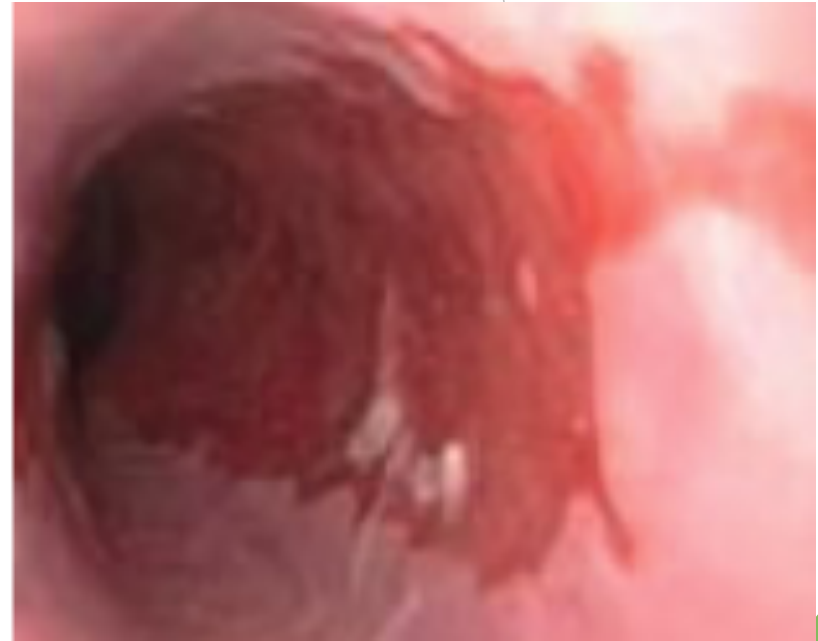
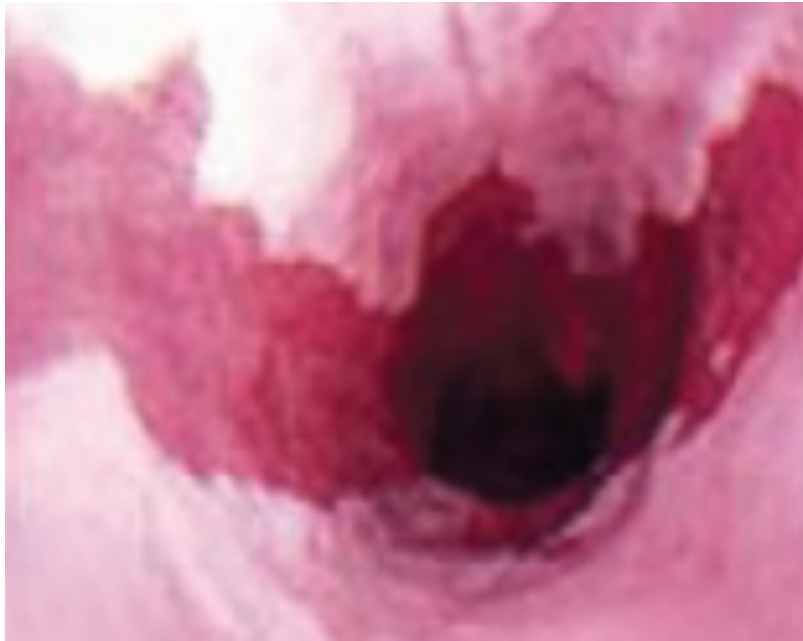
nature.com

Robbins Basic Pathology 10th edition

Rings in eosinophilic esophagitis

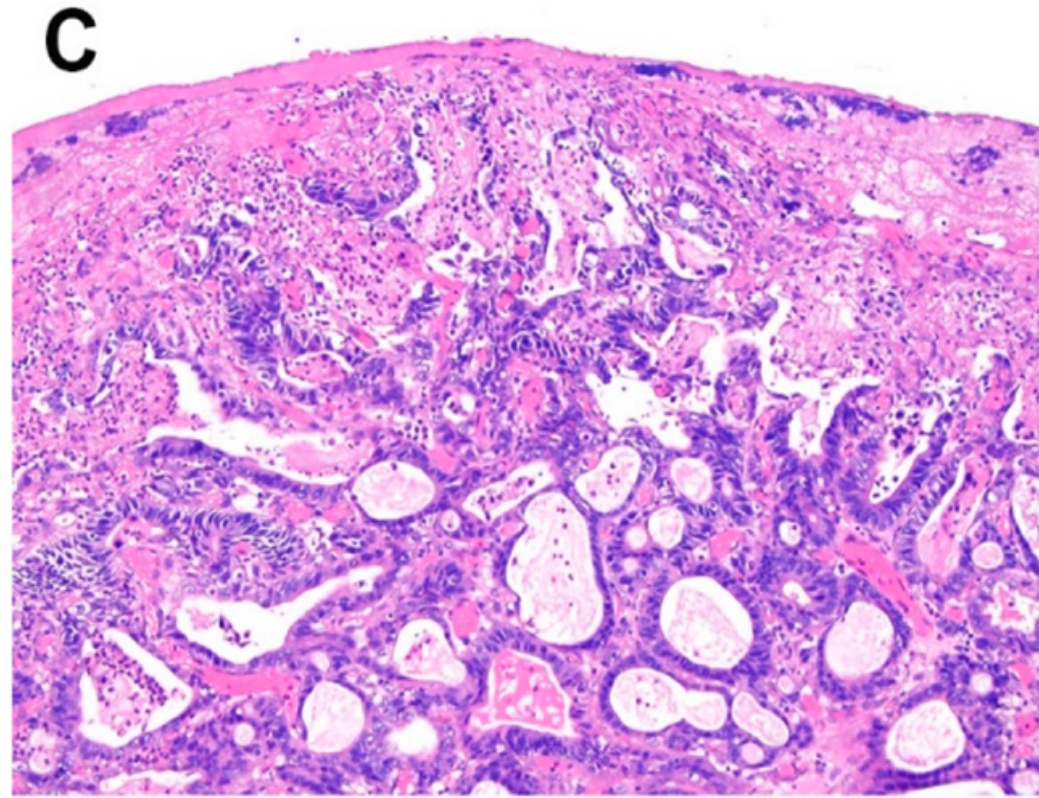
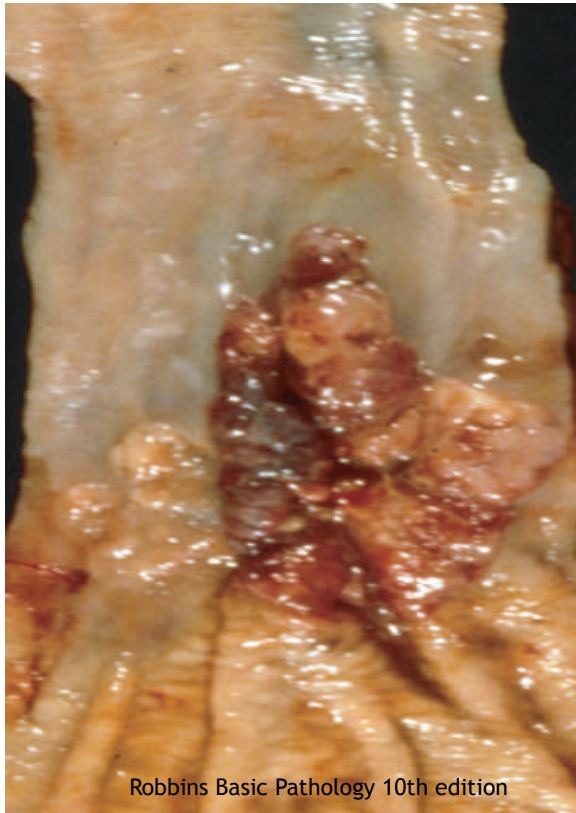


• Robbins Basic Pathology 10th edition



Tongues in Barrett esophagus

Esophageal adenocarcinoma

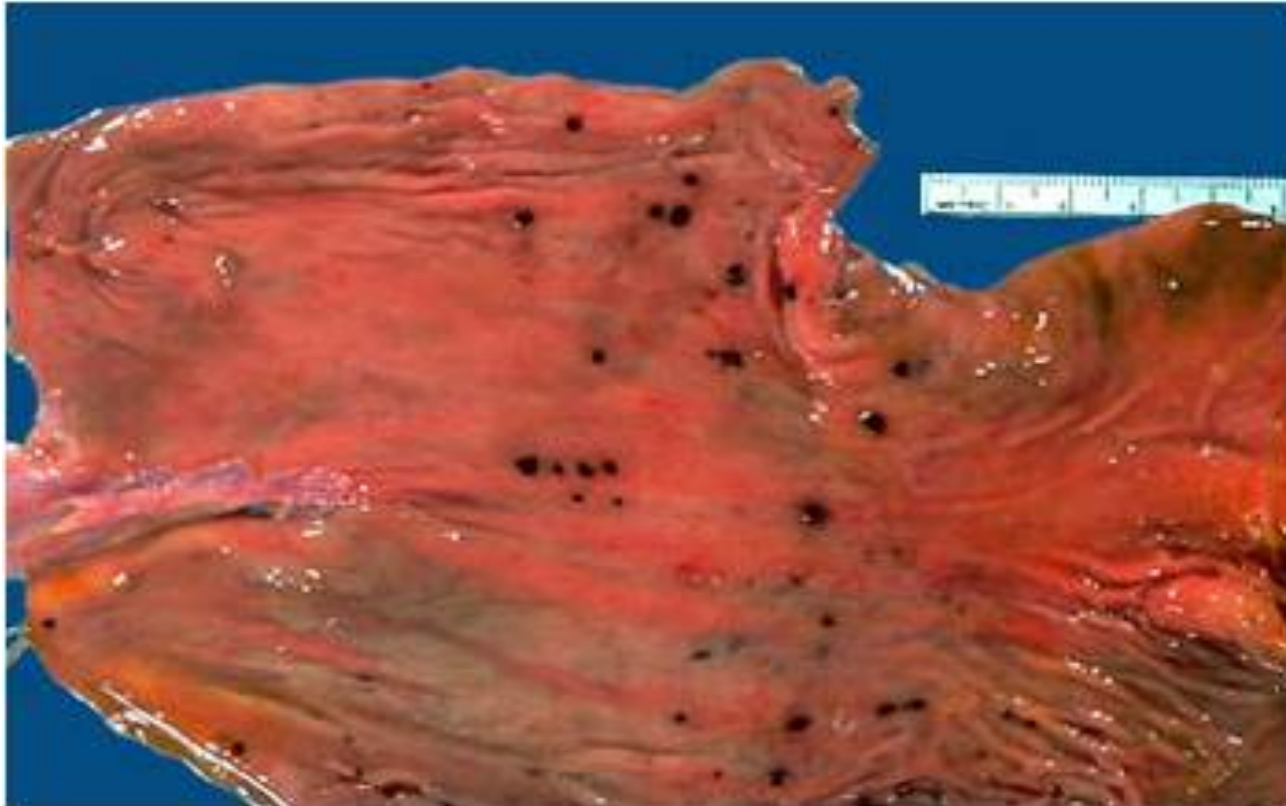


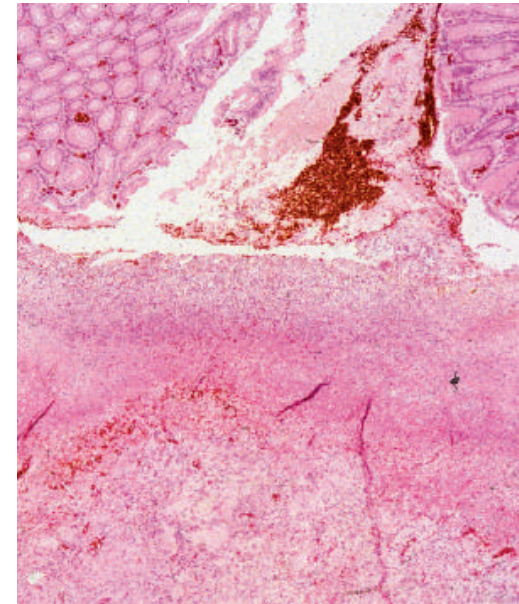
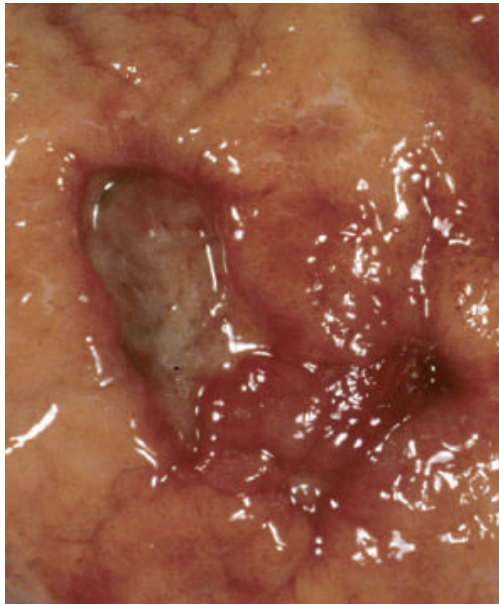
Mid esophagus



- Esophageal squamous cell carcinoma

Stress gastric ulcers





Chronic gastric ulcers

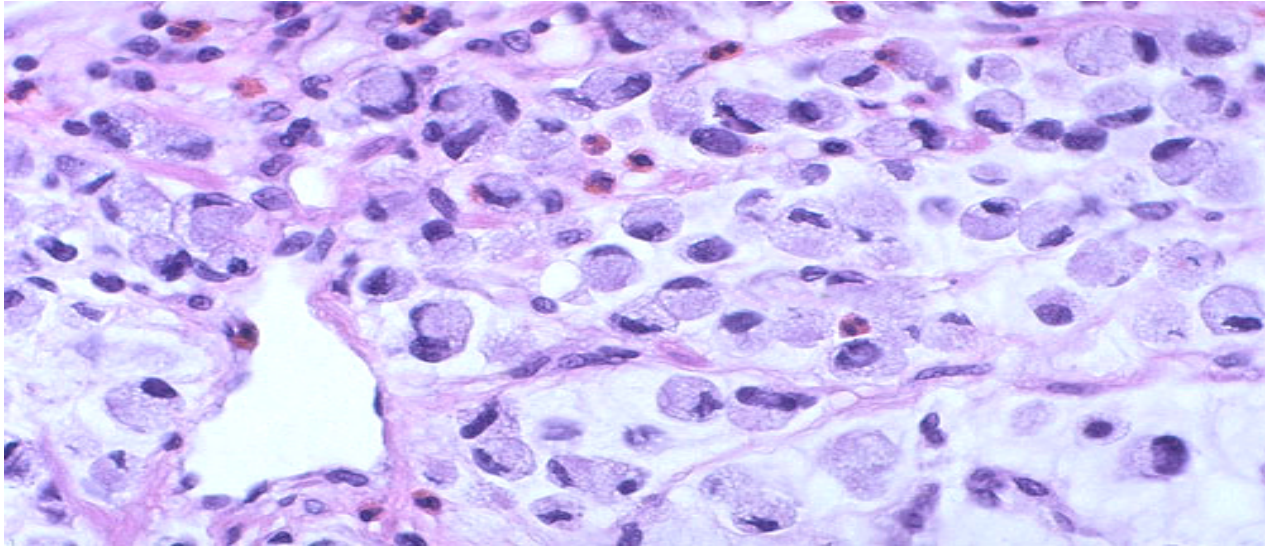
Robbins Basic Pathology 10th edition

Duodenal ulcer



- Diffuse type gastric cancer (linitis plastica)





Diffuse type, signet ring cells

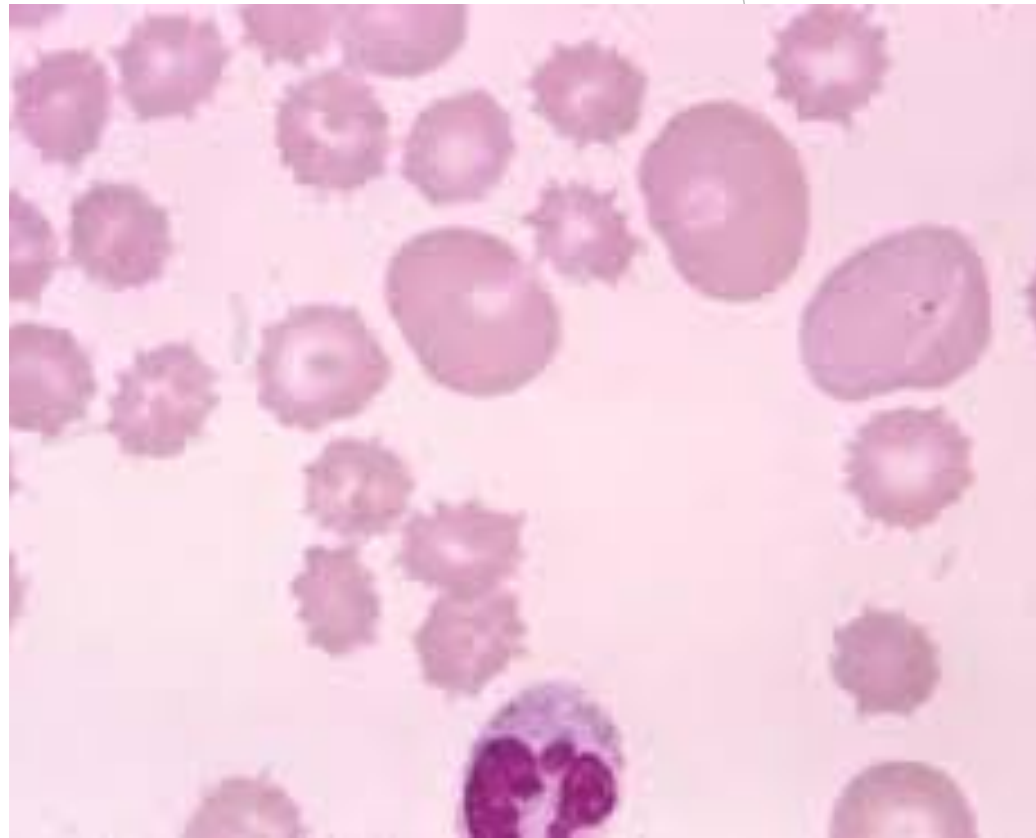
Meckel's diverticulum

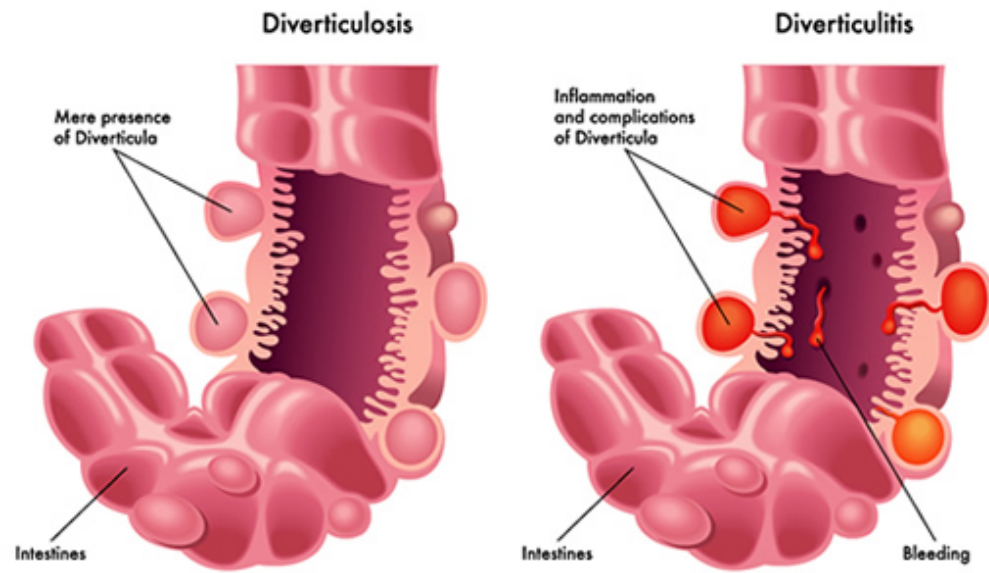


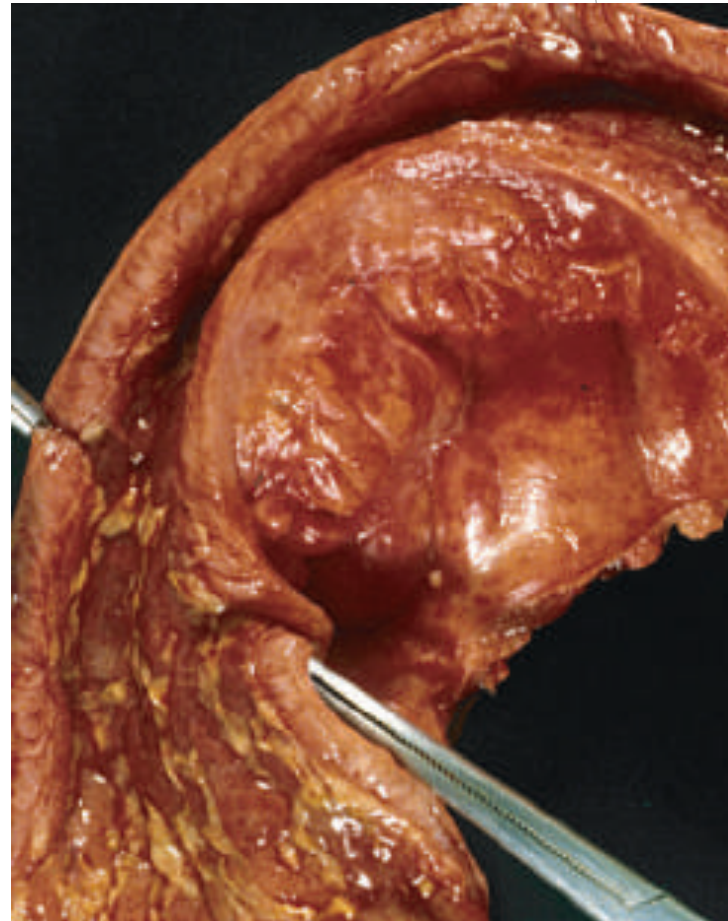
Dermatitis herpetiformis with celiac disease.



- Spur cells in abetalipoproteinemia









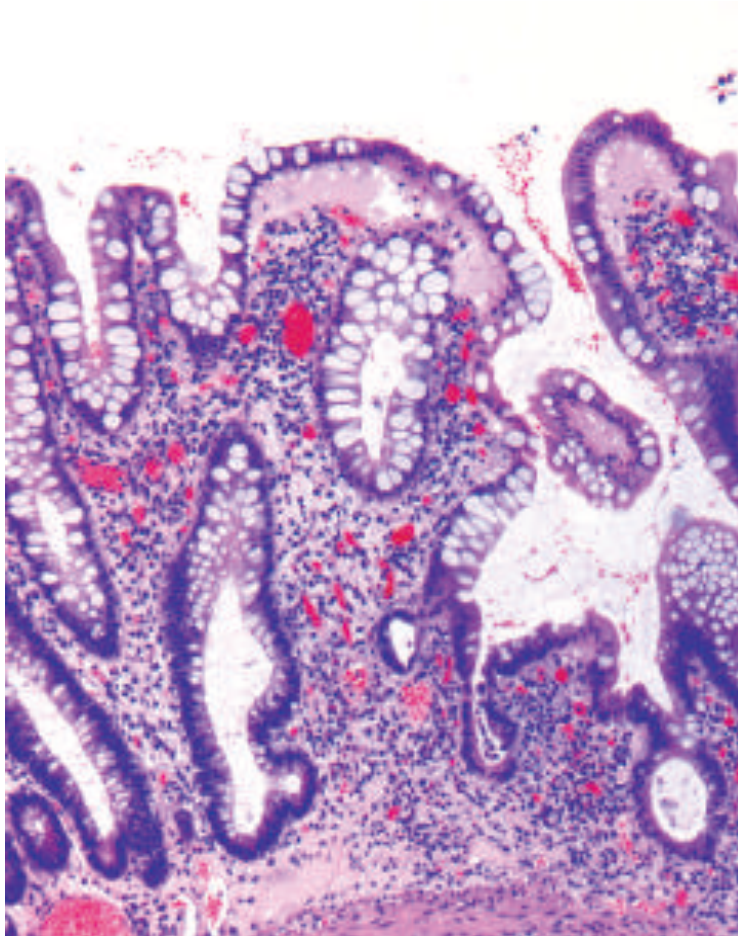
Cobblestone appearance

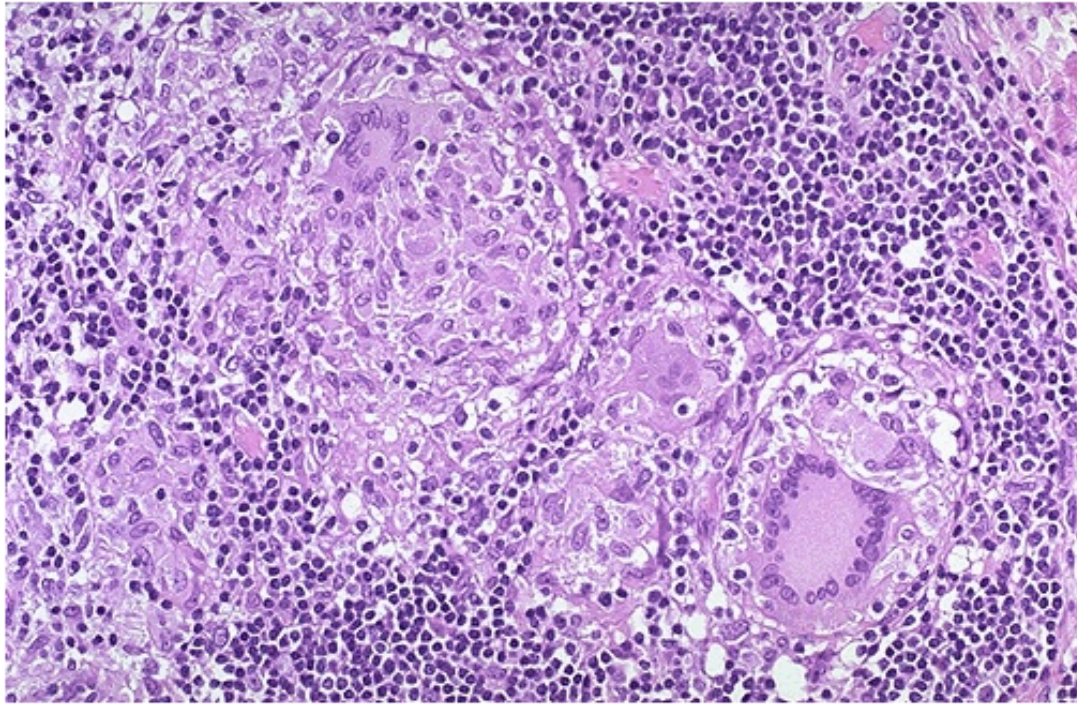
Cobblestone appearance , Crohn disease



[ResearchGate](#)

Haphazardly arranged crypts, CIBD





non-casating granuloma, Crohn disease.

Erythema nodosum, Crohn disease



Neurology



Clubbing



Wikipedi
a

Toxic megacolon



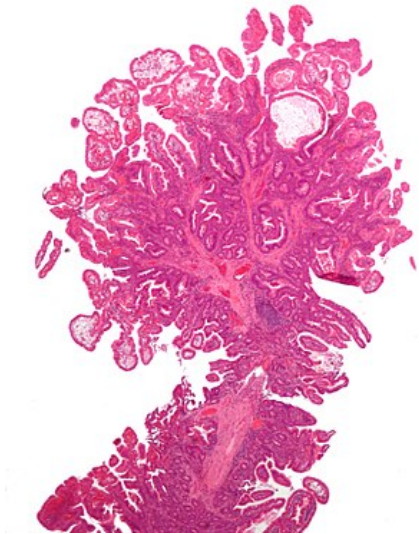
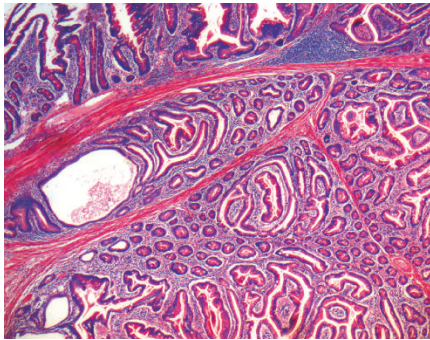
Pancolitis.



Abrupt transition b/w normal and disease segment, ulcerative colitis.



Peutz-Jeghers polyp



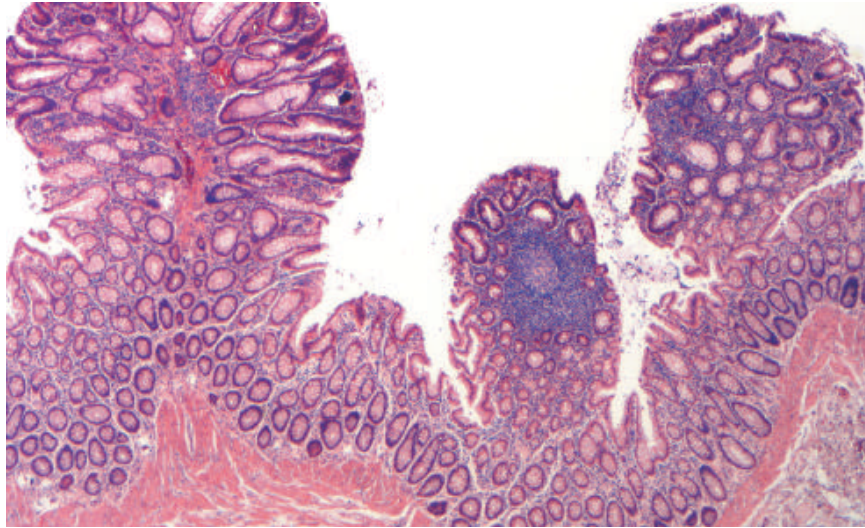
- Christmas tree pattern.

Mucocutaneous pigmentation, Peutz Jegher syndrome



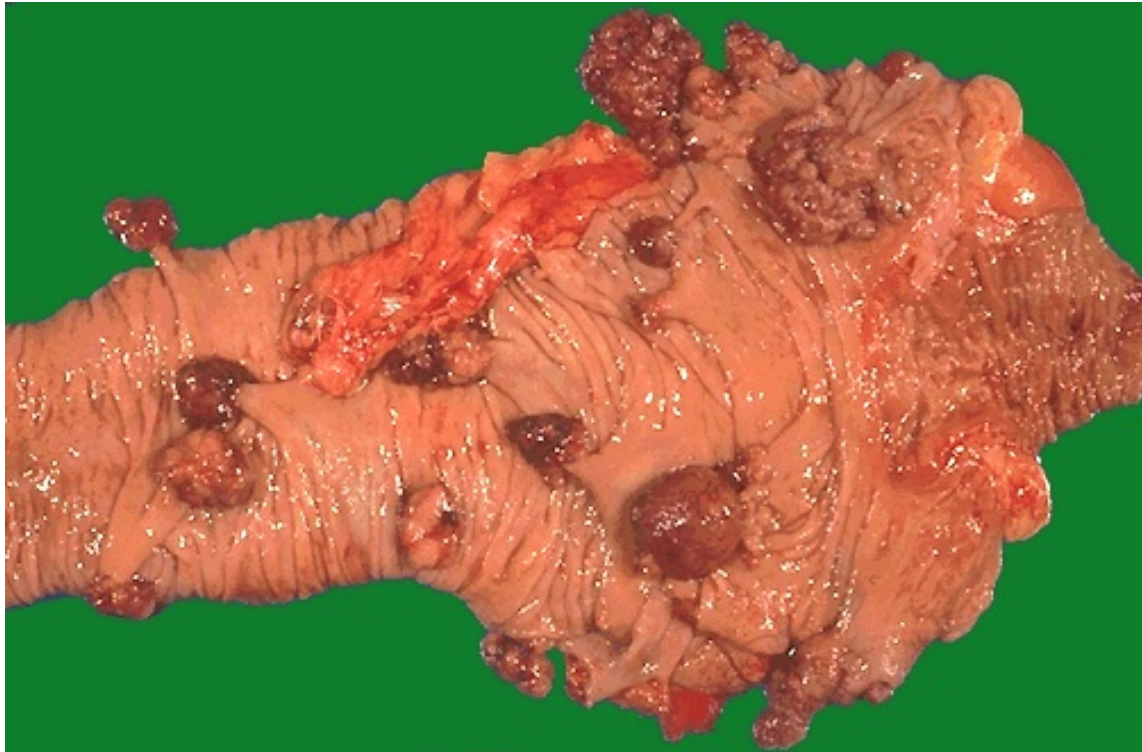
- Familial adenomatous polyposis





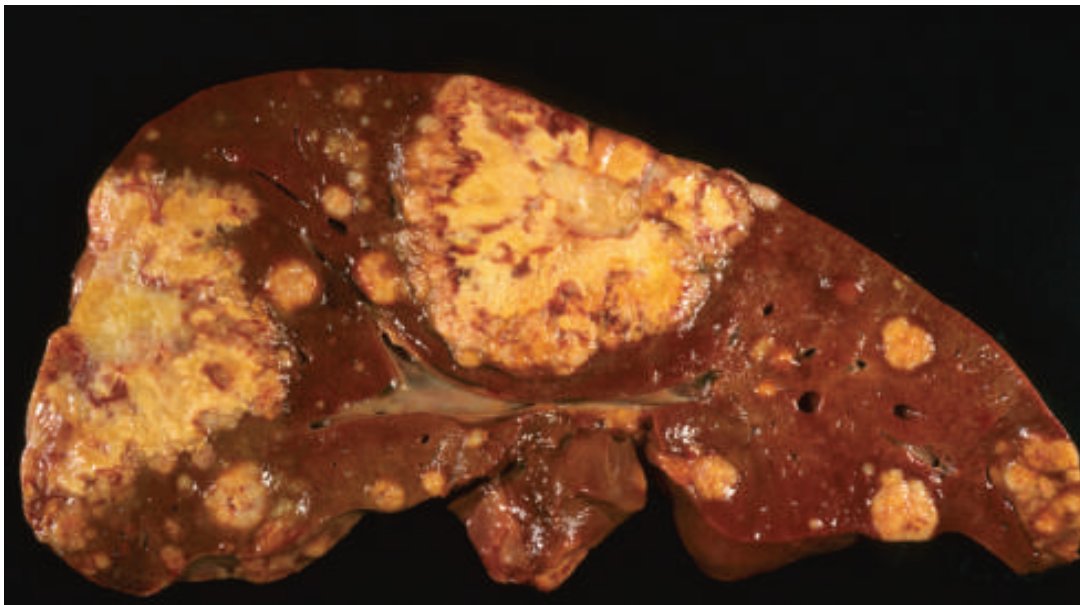
- FAP

Cecal polyps in HNPCC.



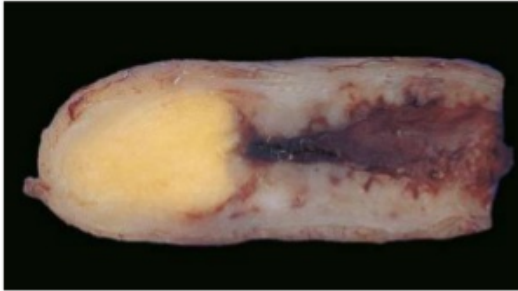
Exophytic adenocarcinoma, colon



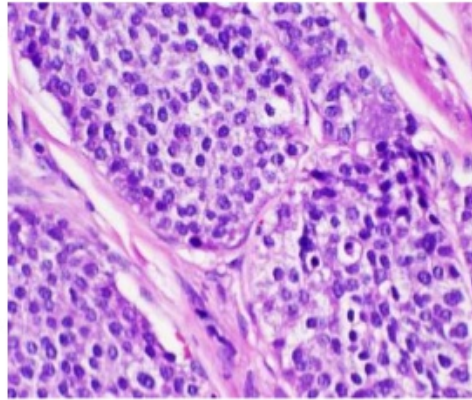


Liver metastasis from colon cancer.

Carcinoid tumor



Gross



Microscopic

- Appendix