

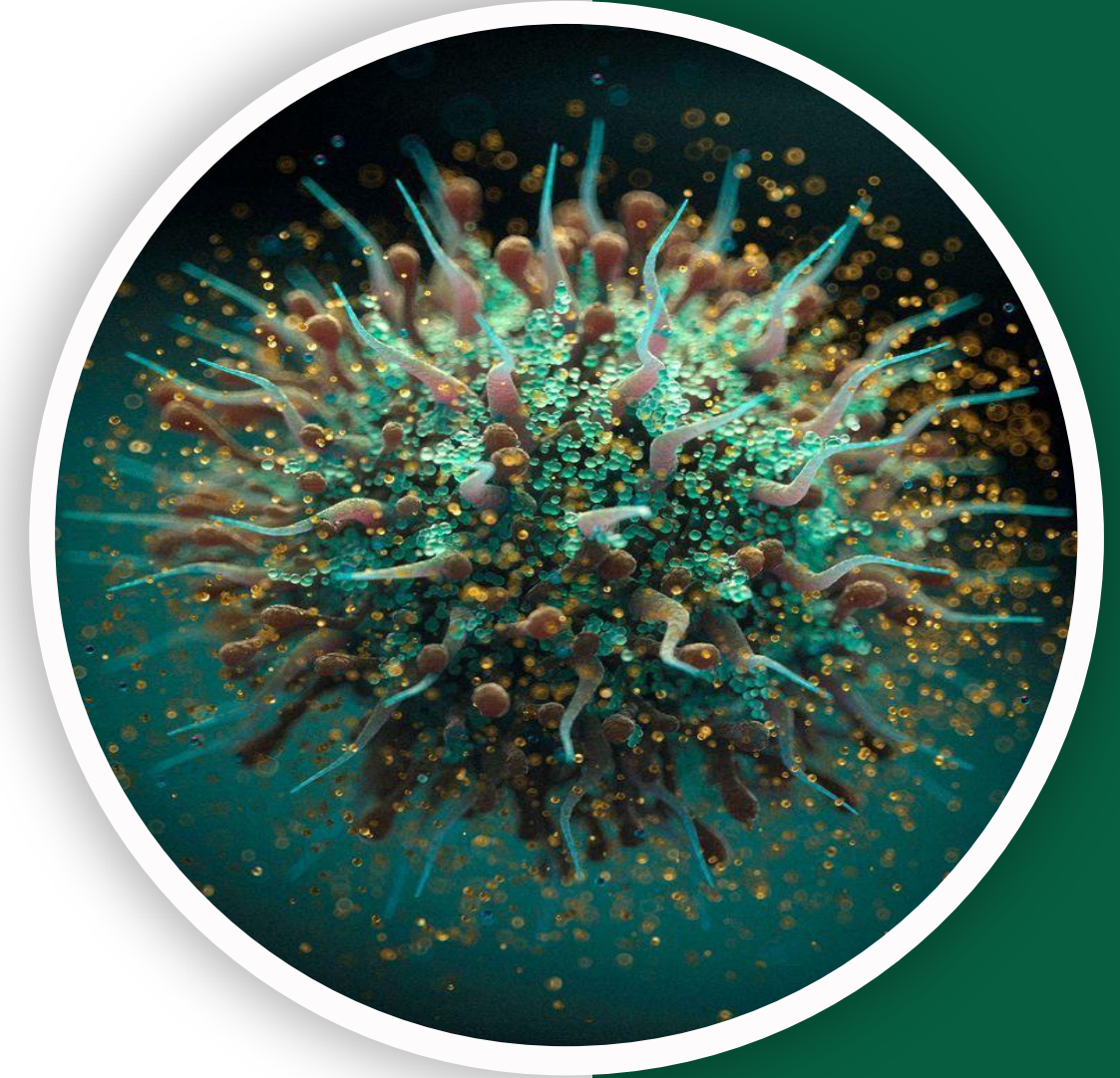
بِسْمِ اللّٰهِ الرَّحْمٰنِ الرَّحِیْمِ
(وَفَوْقَ كُلِّ ذِي عِلْمٍ عَلِيمٌ)



الجین

GIS Pathology | FINAL

Past Papers



Written by : NST

DST

RST

Reviewed by : Nadeen Abdelwahab

Rawan Okour

Maria Baroudi

Pathology 23

All the following are causes of PUD except?

- A. Stress.
- B. H.pylori
- C. Gi bleeding
- D. Smoking
- E. Zollinger ellison syndrome

Ans:C

Which of the following is wrong about PUD?

A-duodenal ulcer is more related to h.pylori more than gastric ulcer

B-stress related ulcer is single antral usually

C-hemebilia is associated with pancreatic tumor

Not related to liver cirrhosis?

A-spider angioma

B-gynecomastia in female

Past Papers

Liver Diseases

Q1. A 55-year-old man with a history of chronic alcoholism diagnosed with early cirrhosis. The development of which of the following conditions is associated with high mortality rate in this patient?

- A. Caput medusa
- B. Upper GIT bleeding
- C. Ascites
- D. Hemorrhoids
- E. Splenomegaly

Answer: B

Q2. All of the following are portosystemic shunts except:

- A. Hemorrhoids
- B. Varices
- C. Retroperitoneum
- D. Caput medusae
- E. Hepatosplenic

Answer: E

Q3. A 65-year-old chronic alcoholic man presented with weight loss and hepatomegaly; his liver function test revealed elevated liver enzymes. What is his lifetime probability of developing liver cirrhosis?

- A. 5-10%
- B. 50-70%
- C. 30-40%
- D. 20-25%
- E. 10-15%

Answer: E

I don't believe that this was mentioned

Q4. Which of the following is not associated with chronic liver disease:

- A. Portal hypertension
- B. Cirrhosis
- C. Testicular hypertrophy

Answer: C

Q5. A pathologic study of hepatic cirrhosis is performed. There is a collapse of reticulin with bridging fibrosis from deposition of collagen in the space of Disse to form fibrous septa. Which of the following cell types is activated under the influence of cytokines to give rise to collagen-producing cells?

- A. Bile duct cell
- B. Endothelial cell
- C. Hepatocyte
- D. Macrophage
- E. Stellate cell

Q6. The most likely complication of cirrhosis that could lead to thrombocytopenia is:

- A. Ascites
- B. Hemorrhoids
- C. Esophageal varices
- D. Splenomegaly
- E. Hepatic Encephalopathy

Not explicitly mentioned . However, in the slide it was stated that splenomegaly causes hypersplenism

Hypersplenism : a condition where the spleen becomes overactive, leading to the premature destruction of blood cells. This overactivity can cause a decrease in the number of red blood cells, white blood cells, or platelets in the blood, known as cytopenia.

Answer: D

Q7. True about alcoholic liver disease:

- A. It is characterized by periportal fibrosis only
- B. Mallory bodies are morphological features of the disease
- C. It never progresses to cirrhosis
- D. It is not associated with inflammation
- E. It is always asymptomatic

Answer: B

Q8. Coma in liver disease is due to increased level of:

A. Urea

B. Bilirubin

C. Glucose

D. Ammonia

E. Ketone bodies

Answer: D

Q9. A woman used to drink alcohol for 4 years then decided to quit. What is the most likely outcome for her liver?

- A. Development of hepatocellular carcinoma despite cessation
- B. Progression to micronodular cirrhosis
- C. Complete histological and functional recovery
- D. Persistent alcoholic steatohepatitis with ongoing fibrosis
- E. Irreversible decompensated liver failure

Answer: C

Q10. Non-alcoholic fatty liver disease is seen in all the following conditions EXCEPT one:

- A. Insulin resistance
- B. Obesity
- C. Diabetes mellitus type 2
- D. Dyslipidemia
- E. Chronic anemia

Answer: E

Q11. One of the following regarding hepcidin is CORRECT:

- A. Spleen is the main source
- B. Reduced hepcidin levels associated with increased iron absorption
- C. It enhances iron efflux from intestine into plasma
- D. Its levels increased in hemochromatosis
- E. It enhances copper deposition

Answer: B
↓ hepcidin → ↑ iron
absorption in
hemochromatosis

Q12. Ceruloplasmin is copper complexed with which of the following:

A. Albumin

B. Alpha globulin

C. Bilirubin

D. Acetaldehyde

Answer: B

Wilson's disease — copper +
α₂-globulin = ceruloplasmin

Q13. One of the followings combinations is FALSE:

- A. Liver adenoma - Acetaminophen
- B. Wilson disease - ATP7B gene mutation
- C. Budd-Chiari syndrome - Oral contraceptive
- D. Sinusoidal obstruction syndrome - Cyclophosphamide
- E. Reye syndrome - Microvesicular fatty change

Q14. All of the following cause fatty changes in the liver EXCEPT:

A. Sinusoidal obstruction

B. Obesity

C. DM

D. Reye's syndrome

E. Viral hepatitis

Q15. One of the following is FALSE regarding Wilson disease:

- A. Decreased serum ceruloplasmin
- B. Decreased urinary copper excretion
- C. Mallory hyaline bodies
- D. Fatty change in liver
- E. Kayser-Fleischer ring

اللَّهُمَّ صَلِّ وَسَلِّمْ عَلَى نَبِيِّنَا مُحَمَّدٍ

Answer : B

Q16. Cholangiocarcinoma arises from which of the following:

- A. Kupffer cells
- B. Hepatocytes
- C. Ito cells
- D. Endothelial cells
- E. Biliary duct epithelium

Answer : E

Q17. One of the following is NOT true about hepatic focal nodular hyperplasia:

- A. Nodular regeneration of hepatocytes
- B. High risk of malignant transformation
- C. Female predominance
- D. Not related to cirrhosis
- E. Can be associated with cavernous hemangioma

Q18. Liver cell adenoma is classically related to the exposure of one of the following:

- A. Oral contraceptives
- B. Halothane
- C. Tetracycline
- D. Antineoplastic agents
- E. Carbon tetrachloride

Answer : A

Q19. The second most common site of copper accumulation in Wilson disease is:

- A. Brain
- B. Skin
- C. Heart
- D. Kidney
- E. Lungs

Answer : A
Basal ganglia

Q20. Mallory-hyaline bodies (damaged intermediate filaments) can be seen in which of the following conditions?

- A. Wilson disease
- B. Primary biliary cirrhosis
- C. Alcoholic hepatitis
- D. HCC
- E. All of the above

Answer : E

Q21. All of the following could lead to a carrier state of hepatitis EXCEPT

A. Vertical transmission

B. Immunodeficiency

C. HCV

D. HBV

E. HAV

Answer : E
It's a micro Q

Q22. A 31-year-old woman... ANA, anti-LKM-1, anti-SMA positive...
diagnosis?

- A. α 1-Antitrypsin deficiency
- B. Autoimmune hepatitis
- C. Chronic alcoholism
- D. HDV infection
- E. Isoniazid ingestion

Answer : B

Q23. Longitudinal study in obese diabetics... which pathology is seen?

A. Apoptosis

B. Cholestasis

C. Cirrhosis

D. Hemosiderosis

E. Steatosis

Answer : E

Q24. Patients with hereditary hemochromatosis have a mutation in:

- A. MHC Class I
- B. ATP7B
- C. HFE
- D. HNF1- α
- E. DMT1

Q25. Girl with tremor, psychosis, Kayser-Fleischer rings — serologic test shows:

- A. Decreased α 1-antitrypsin level
- B. Decreased ceruloplasmin level
- C. Increased α -fetoprotein level
- D. Increased ferritin level
- E. Positive antimitochondrial antibody

Answer : B

Q26. Which of the following is a morphological feature of alcoholic liver disease?

- A. Mallory bodies
- B. Ground-glass hepatocytes
- C. Bile plugs
- D. Steatosis only

Answer : A

Q27. Coma in liver disease is most likely due to increased levels of which substance?

A. Urea

B. Ammonia

C. Creatinine

D. Lactic acid

Answer : B

Q28. Which of the following statements about fibrolamellar carcinoma is FALSE?

- A. It occurs in young adults
- B. It has no relation to HBV
- C. It occurs in elderly
- D. It has a better prognosis

Answer : C

Q30. The presence of PAS-positive, diastase-resistant granules in hepatocytes is characteristic of:

- A. Wilson disease
- B. Hemochromatosis
- C. Alpha-1 antitrypsin deficiency
- D. Autoimmune hepatitis

Answer : C

Q31. Which of the following is FALSE regarding hereditary hemochromatosis?

- A. It is associated with increased hepcidin levels
- B. It can lead to skin pigmentation
- C. It causes iron overload
- D. It may cause cirrhosis

Answer : A

Q32. Which of the following mechanisms underlies Wilson disease?

- A. Decreased hepatic secretion of copper
- B. Increased iron absorption
- C. Autoimmune hepatocyte destruction
- D. Increased ceruloplasmin synthesis

Answer : A

Q33. A patient with Wilson disease is likely to have which laboratory findings?

- A. High alpha-globulin and high albumin
- B. Low alpha-globulin and low albumin
- C. Normal protein profile
- D. High ceruloplasmin

Answer : B

Q34. Oral contraceptive pills are classically associated with which liver lesion?

- A. Hepatocellular carcinoma
- B. Focal nodular hyperplasia
- C. Hepatic adenoma
- D. Cholangiocarcinoma

Answer : C

Q35. Skin pigmentation (bronze skin) is typically seen in:

- A. Wilson disease
- B. Hemochromatosis
- C. Alpha-1 antitrypsin deficiency
- D. Reye syndrome

" اللهم أصلح قلبي وعملي "

Answer : B

Q36. A 65-year-old man presented with malaise and weight loss. On physical examination, he was found to have enlarged abdomen and skin yellowish discoloration. An abdominal CT scan showed uniformly enlarged liver. Liver biopsy microscopically showed abundant Mallory-hyaline bodies, neutrophilic infiltrates, necrosis of hepatocytes, and extensive macro vesicular steatosis. Which of the following is the most likely diagnosis?

- A) Acetaminophen toxicity.
- B) Sclerosing cholangitis.
- C) Chronic hepatitis B infection.
- D) Acute hepatitis.
- E) Alcoholic hepatitis.

Answer: E

Q37. A liver biopsy showed abundant Mallory hyaline bodies and extensive macro vesicular steatosis. Which of the following is the most likely underlying condition?

- A) Sclerosing cholangitis
- B) Chronic alcoholism
- C) Acetaminophen toxicity
- D) Budd-Chiari syndrome
- E) Hemochromatosis

Answer: B

Q38. Is not associated with chronic liver disease:

Repeated 😞

- A) Portal hypertension
- B) Cirrhosis
- C) Testicular hypertrophy

Answer: C

Q39. A mutation in aldehyde dehydrogenase could lead to accumulation of acetaldehyde, which of the following could be an outcome of this toxic accumulation?

- A) Fascial flushing
- B) Hyperventilation
- C) Tachycardia
- D) B+C
- E) All of the above

Answer: E

Q40. what is the most common cause of acute hepatic failure?

- A) Gallstones
- B) Fatty liver
- C) Fulminant viral hepatitis
- D) Autoimmune hepatitis

Answer: C

Q41. Most common malignancy of the liver:

A) Hepatocellular carcinoma

B) Metastatic tumors

C) Adenocarcinoma

D) Fibrolamellar carcinoma

Answer: B

Q42. Ascites with behavior change in child is associated with:

- A) Wilson disease.
- B) Hemochromatosis.
- C) Budd-Chiari.
- D) Hyperalbuminemia.

Q43. Which of the following statements is false?

- A) Hepatic encephalopathy caused by the increased amount of NH_3 in the blood because damaged hepatocytes cannot metabolize ammonia through urea cycle.
- B) High doses of rifampin and isoniazid may lead to acute liver failure.
- C) 50-60% of Fulminant hepatitis cases are caused by viral hepatitis.
- D) Chlorpromazine considers one of the causes of predictable drug induced liver disease.
- E) Acetaminophen is the most common cause of drug induced liver failure.

Q44. Which of the following statements is false?

- A) α -1-Antitrypsin deficiency is an AR disorder that leads to pulmonary emphysema and hepatic damage.
- B) Liver function tests (LFTs) are abnormal in Reye's syndrome.
- C) Budd–Chiari Syndrome characterized by occlusion of the portal veins.
- D) Primary Sclerosing Cholangitis caused by fibrosis and obstruction of both intra-hepatic and extra-hepatic bile ducts.
- E) Anti-mitochondrial antibodies are associated with Primary biliary cirrhosis.

Q45. A 41-year-old, previously healthy woman has noted abdominal discomfort for the past month. Laboratory studies show normal serum total protein, albumin, AST, ALT, and bilirubin, but her alkaline phosphatase level is elevated. Serologic testing for hepatitis A, B, and C viruses is negative. Abdominal CT scan shows a 9-cm right hepatic lobe mass with irregular borders. The lesion is resected, and gross inspection reveals a central stellate scar with radiating fibrous septa that merge into surrounding hepatic parenchyma and there is a local vascular injury. What is the most likely diagnosis?

- A) Metastatic adenocarcinoma
- B) Focal nodular hyperplasia
- C) Hepatic adenoma
- D) Hepatocellular carcinoma
- E) Macronodular cirrhosis

Answer: B

Q46. The most common predisposing factor of HCC is:

- A) HBV infection.
- B) metastasis to the liver.
- C) alcohol abuse.
- D) Drugs.
- E) hereditary hemochromatosis.

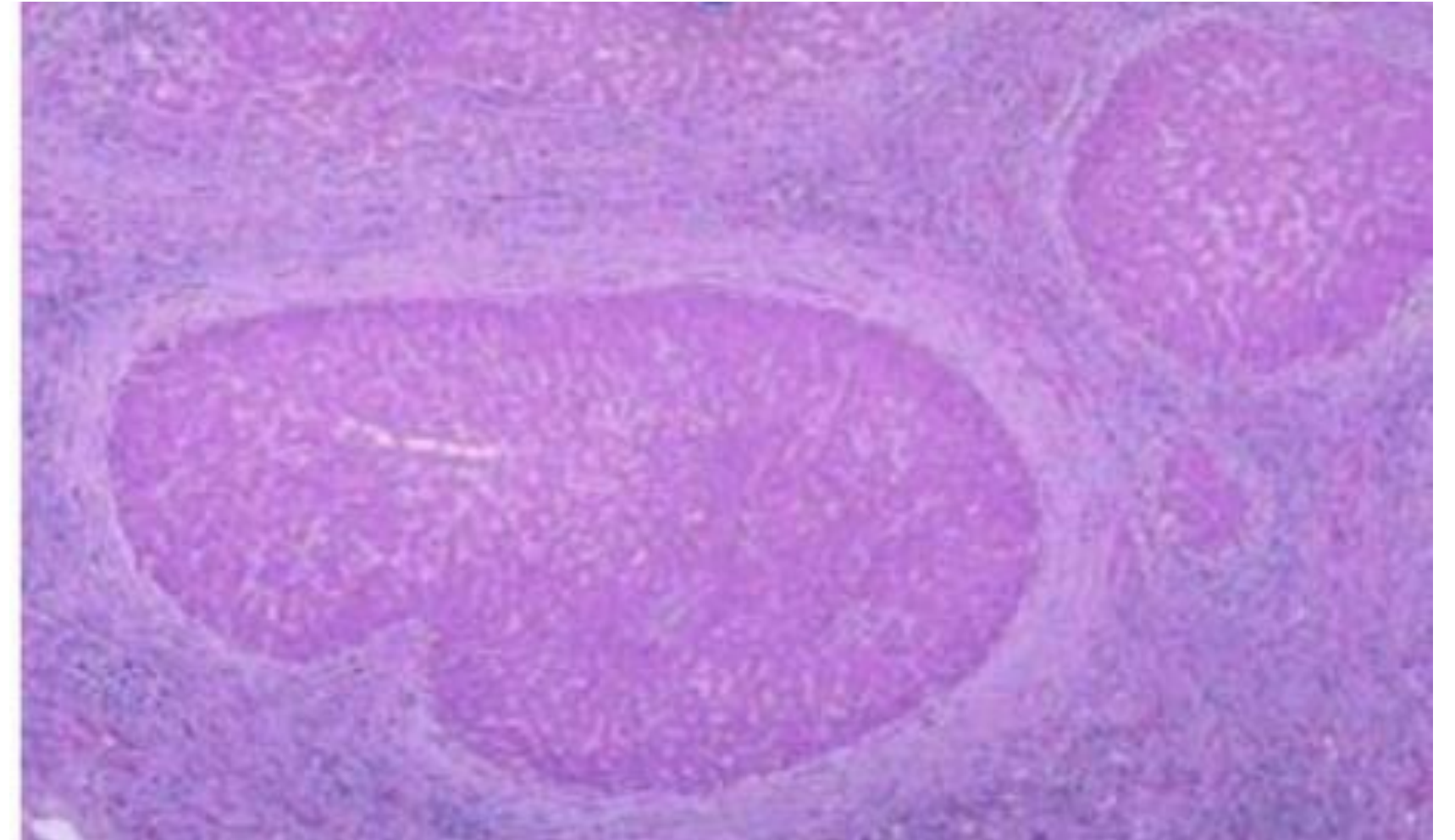
اللَّهُمَّ إِنِّي أَعُوذُ بِكَ
مِنْ زَوَالِ نِعْمَتِكَ وَتَحَوُّلِ عَافِيَتِكَ
وَفَجَاءَةِ نِقْمَتِكَ وَجَمِيعِ سَخَطِكَ

Answer: A

Practical

Q1. This represents a microscopic appearance of a condition that can result of all of the following EXCEPT one:

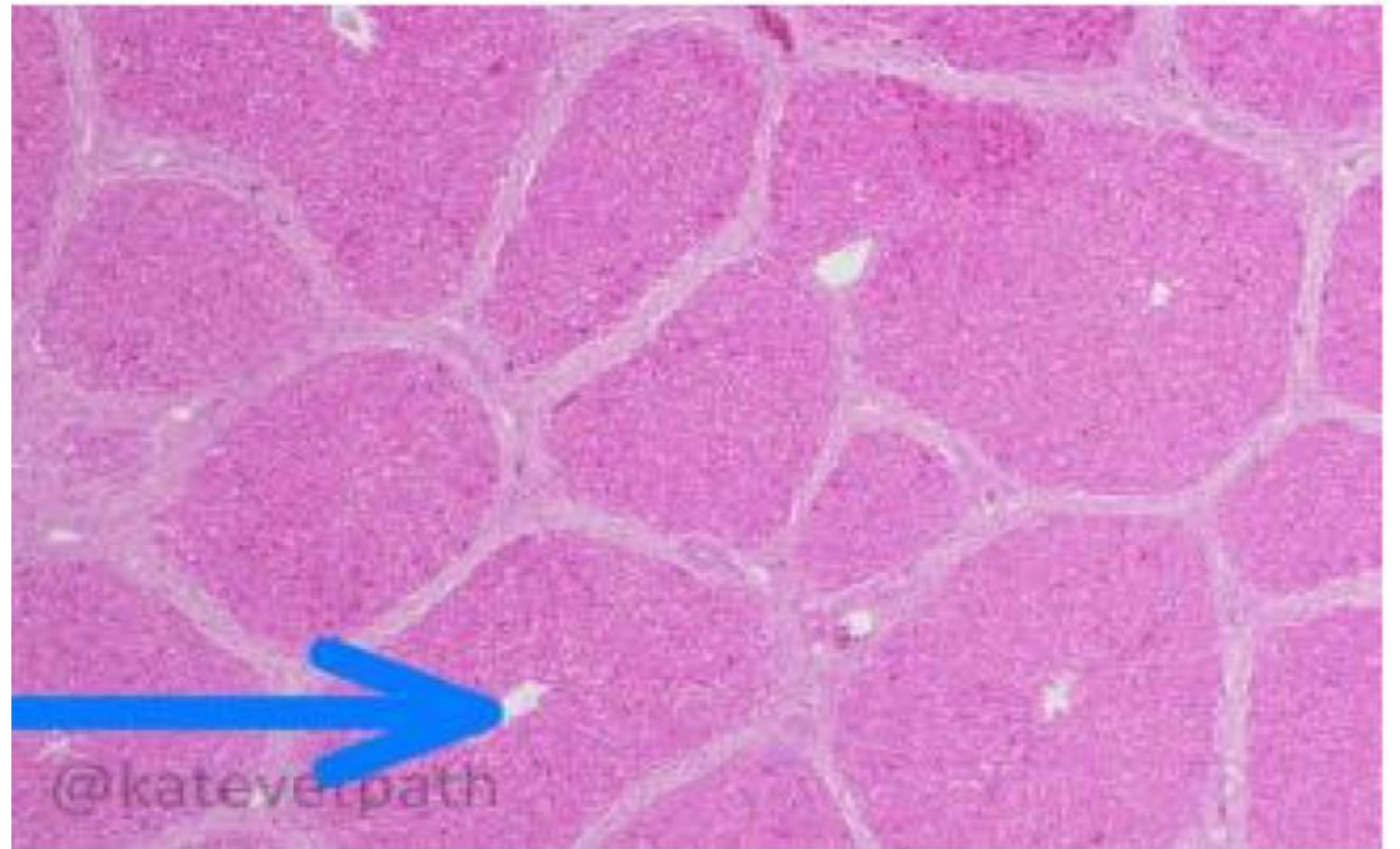
- A. Wilson disease
- B. Viral hepatitis
- C. Hemochromatosis
- D. Reye syndrome
- E. Biliary disease



Answer : D

Q2. Identify the pointed structure in this section:

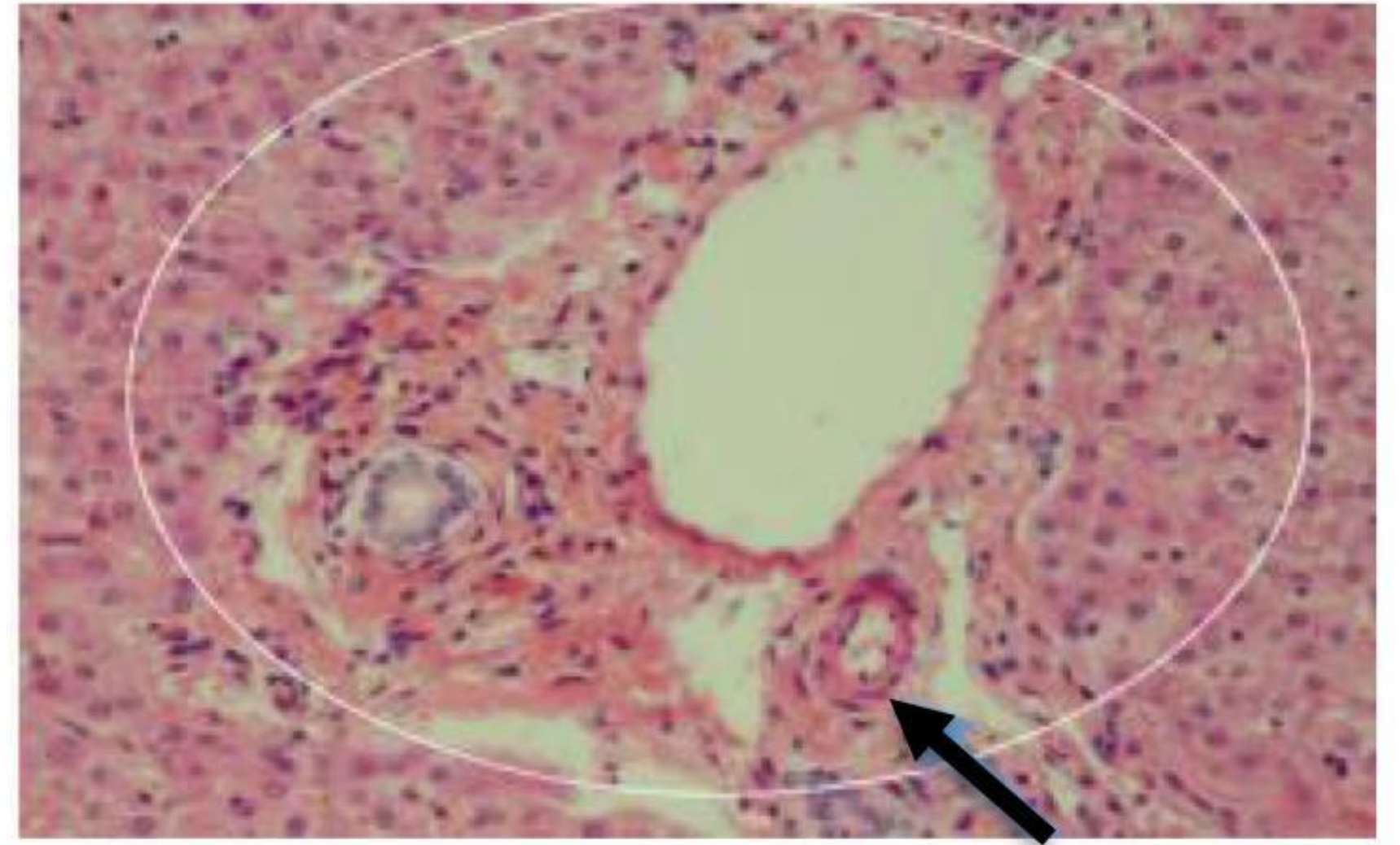
- A) Branch from portal vein
- B) Bile duct
- C) Central vein
- D) Branch from hepatic artery
- E) Blood sinusoids



Answer: C

Q3. The pointed structure represents:

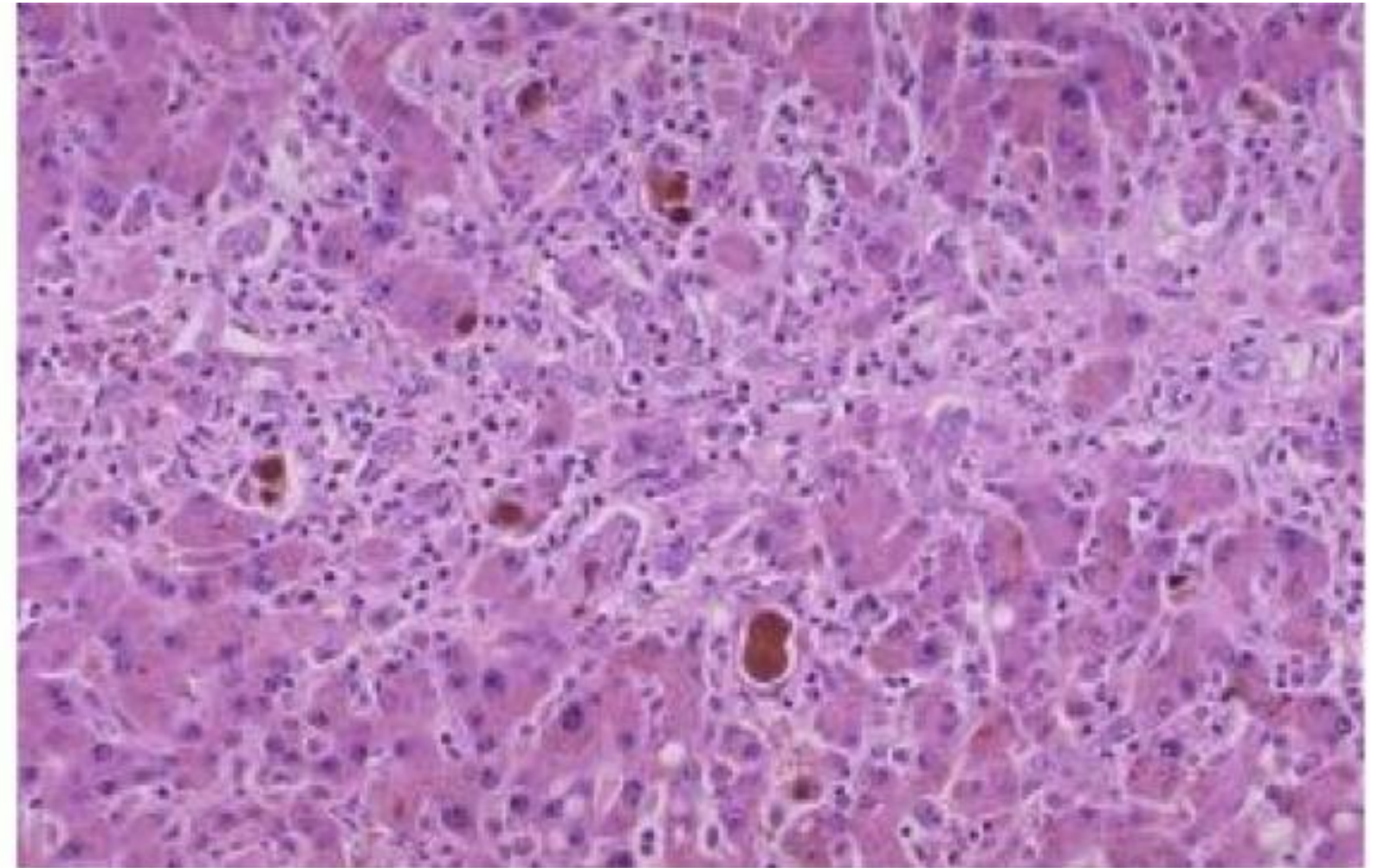
- A) Portal triad
- B) Portal vein
- C) Bile duct
- D) Hepatic artery



Answer: D

Q4. The intra canalicular and intracellular accumulation of this brown pigment in Liver represents:

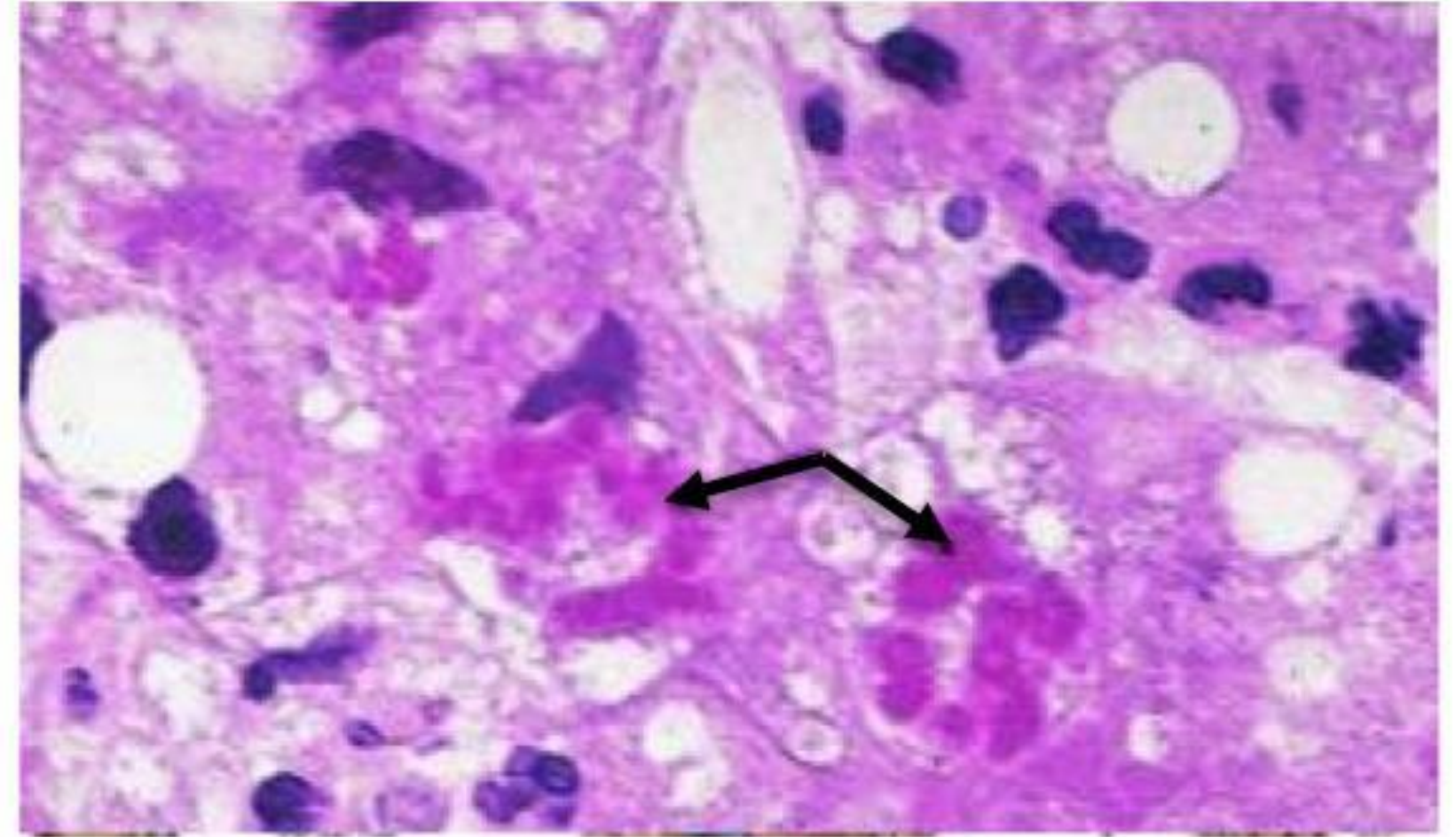
- A) Hemochromatosis
- B) Steatosis
- C) Wilson disease
- D) Cholestasis
- E) Drug toxicity



Answer: D

Q5. The following deposited things are:

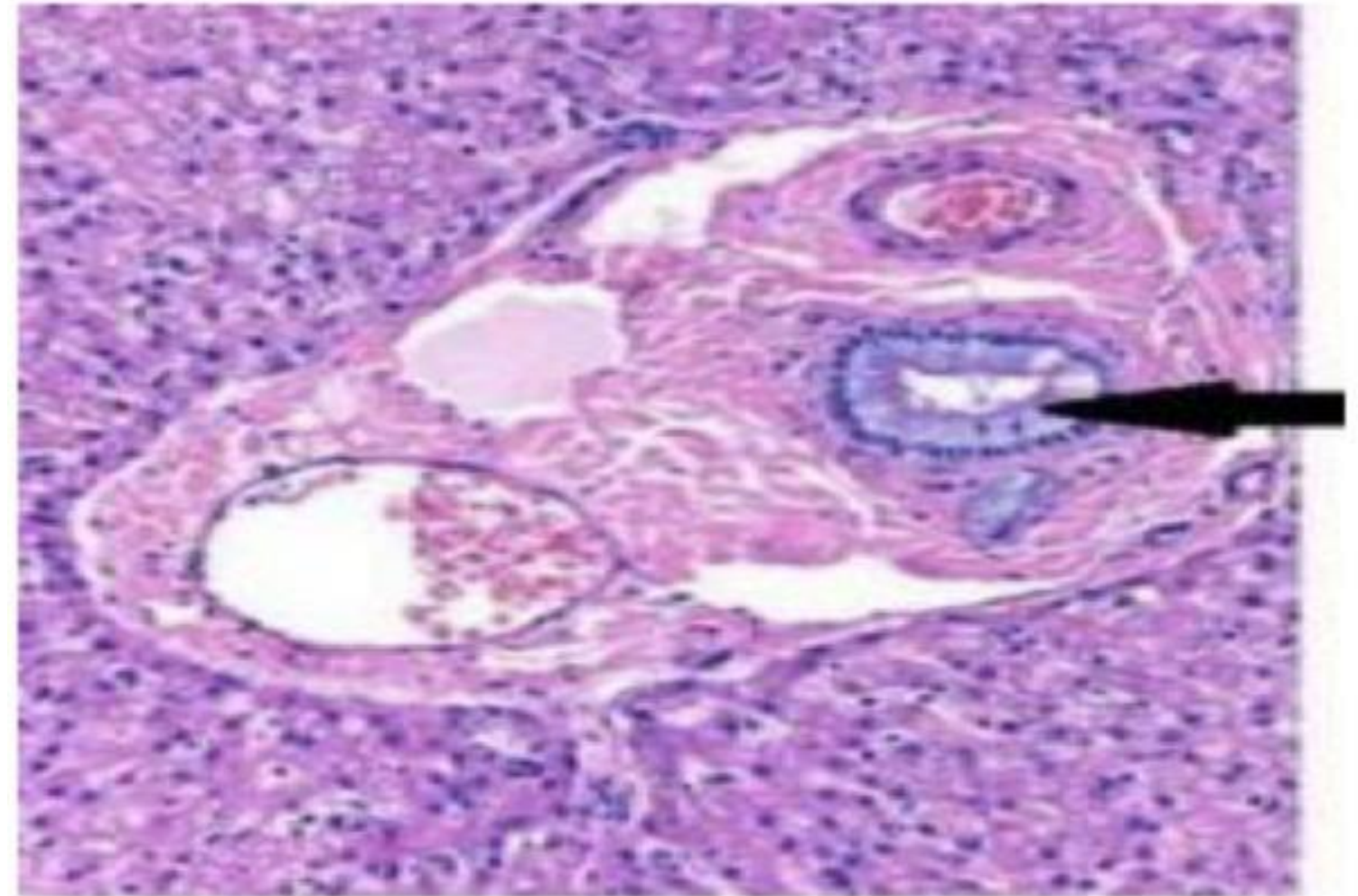
- A) Fat
- B) Cytoskeleton
- C) Iron
- D) Copper



Answer: B

Q6. Identify the pointed structure:

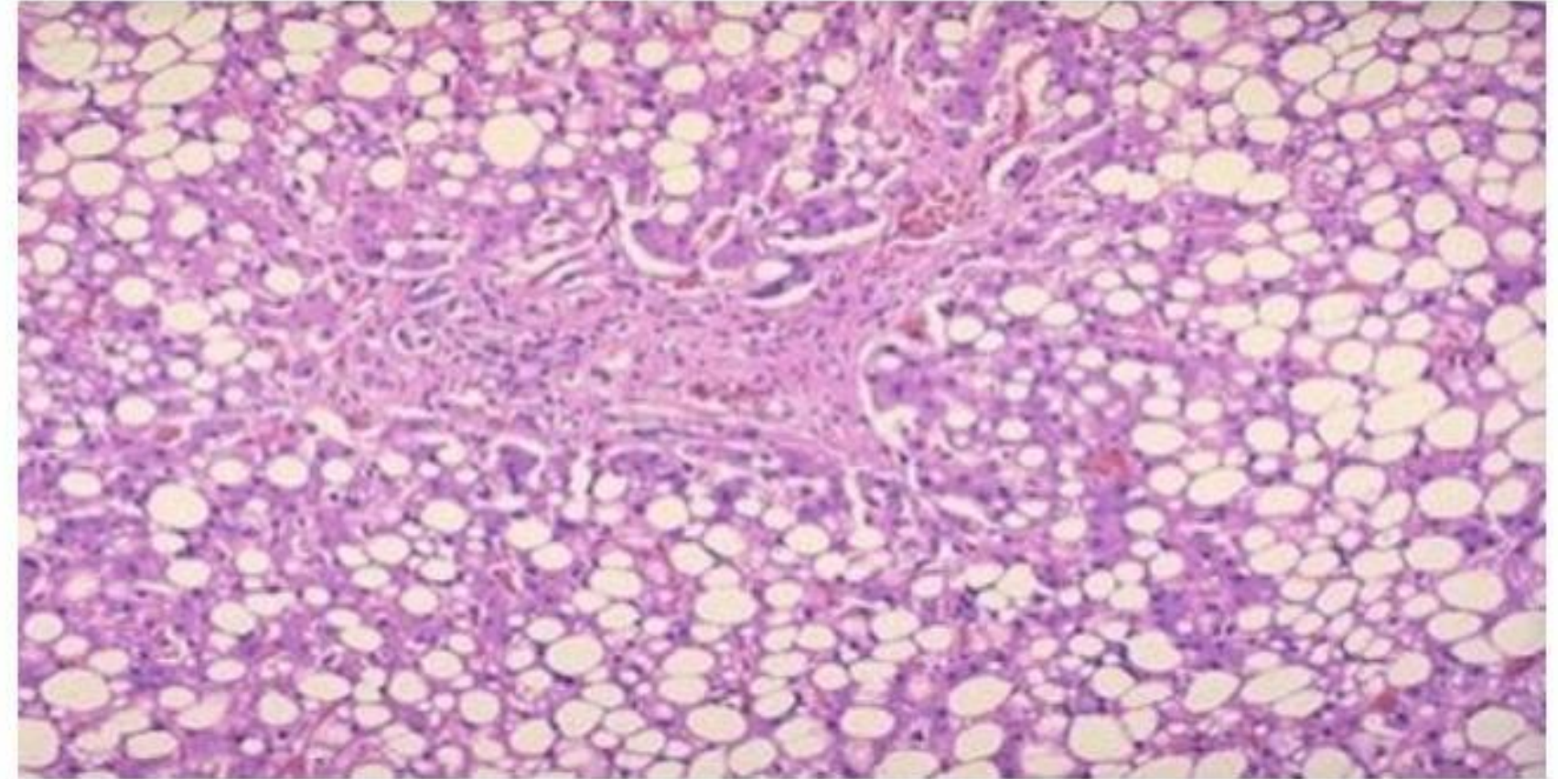
- A) Portal Vein
- B) Hepatic Artery
- C) Porta hepatis
- D) Blood Sinusoids
- E) Bile Duct



Answer: E

Q7. The following pathological condition of the liver most likely represents:

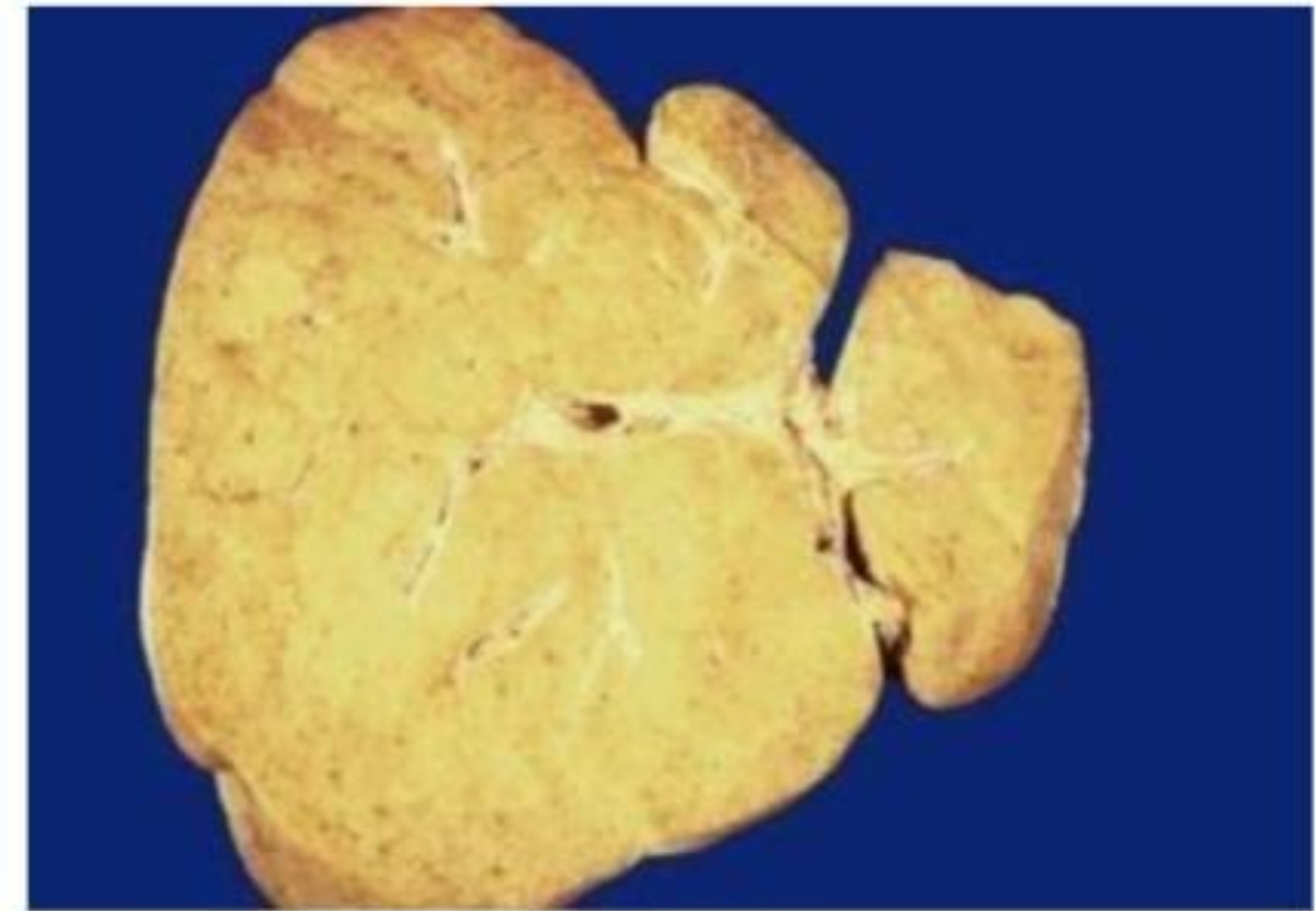
- A) Steatosis.
- B) Steatohepatitis
- C) Liver cancer.
- D) Cirrhosis.



Answer: A

Q8. The following pathological condition of the liver most likely represents:

- A) Fatty liver.
- B) Steatohepatitis.
- C) Liver cancer.
- D) Cirrhosis.



Answer: A

رسالة من الفريق العلمي:



”قد لا تكون النتيجة على

قدر السعي، فعند الله مدخره

@moqbisat

لحين تضعف الإرادة؛

وذاك ما يسمى بفرج الله.”

For any feedback, scan the code or click on it.



Corrections from previous versions:

Versions	Slide # and Place of Error	Before Correction	After Correction
V0 → V1			
V1 → V2			