

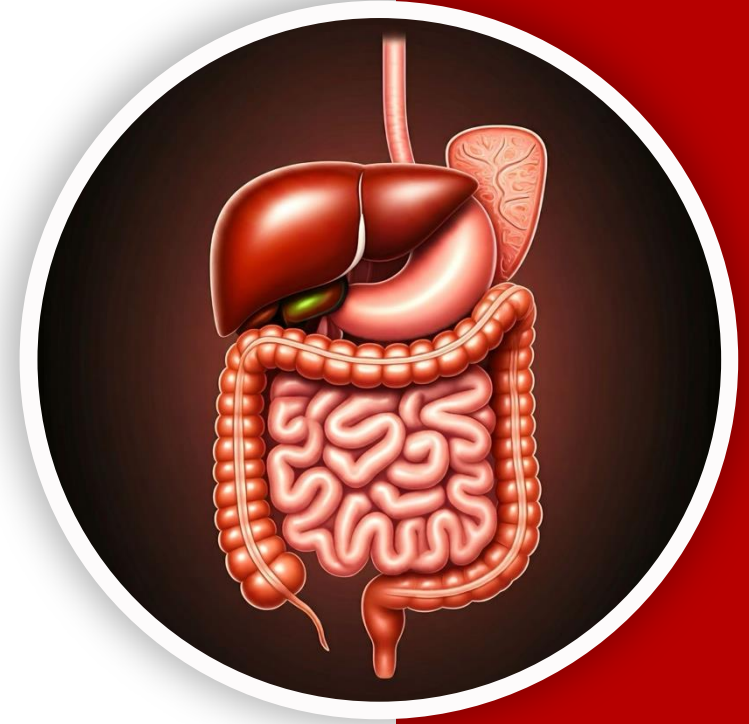
بِسْمِ اللّٰهِ الرَّحْمٰنِ الرَّحِیْمِ  
(وَفَوْقَ كُلِّ ذِي عِلْمٍ عَلِيمٌ)



جِلْدَانِ

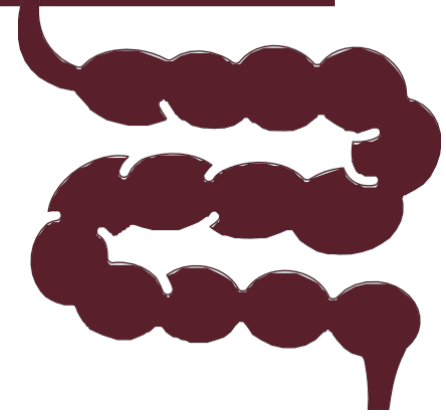
GIS Anatomy | MID

# Past Papers



**Reviewed by :** Rayan Theeb  
Nadeen Abdelwahab

**Special Thank To :** RST  
DST



# *The head & Neck*



Q1:A patient with deviated tongue to the left, what muscle was defected?

- A. Left hyoglossus
- B. Right hyoglossus
- C. Left genioglossus
- D. Right genioglossus

Ans: C

Q2: All of the following structures are found within the substance of the parotid gland except?

- A. Auriculotemporal nerve
- B. Great auricular nerve
- C. Retromandibular vein
- D. External carotid artery
- E. Facial nerve

Ans: B

Q3:One of the following is incorrect about circumvallate papillae?

- A. Taste buds are located medially to the papillae
- B. It is composed of stratified squamous epithelium non keratinized

Ans:A

Q4: Which of the following is wrong about the innervation of the parotid gland?

- A. Sensory innervation is from the facial nerve.
- B. Parasympathetic innervation originates from the inferior salivatory nucleus.
- C. The otic ganglia supply the parotid gland.
- D. Parasympathetic innervation arises from the auriculotemporal nerve.
- E. The sympathetic innervation emerges from the superior cervical sympathetic ganglia.

Ans:A

Q5: All of the following statements are false regarding the mouth, except?

- A. The vermillion (transitional) zone is different from the mucosa, as it has hair follicles and sebaceous glands.
- B. The philtrum is formed by the meeting of the two mandibular prominences.
- C. The vestibule of the mouth has no direct communication with the mouth proper when the teeth are closed.
- D. The glossopharyngeal nerve doesn't carry sensation from the mouth proper.
- E. The substance of the lips is formed by a circular smooth muscle.

Ans: D

Q6:A patient has a tumor arising near the medulla oblongata, the tumor was pressuring the right hypoglossal canal, and the doctors suspected that the right hypoglossal nerve could be damaged.

Which of the following muscles will function normally even if the nerve was damaged??

- A. The right vertical fibers of the intrinsic muscles of the tongue.
- B. Right styloglossus.
- C. Right palatoglossus.
- D. Right genioglossus.
- E. Right hyoglossus.

Ans: C

Q7:All of the following statements are true, except?

- A. The base of the parotid gland is superficial, while its apex is deep.
- B. The submandibular gland's duct opens opposite the lower second molar tooth.
- C. The facial nerve runs superficially in the substance of the parotid gland.
- D. Chorda tympani carries preganglionic parasympathetic fibers for the submandibular and sublingual glands.
- E. E. The lingual nerve first runs lateral to the submandibular duct then inferior then medial to it.

Ans:B

Q8: Which one of the following tongue muscles its action is diagnostic for hypoglossal nerve injury:?

- A. Styloglossal muscle.
- B. Genioglossal muscle.
- C. Intrinsic muscles of the tongue.
- D. Palatoglossal muscle.
- E. Hyoglossal muscle.

Ans: B

Q9:One of the following structures does not lie between the mylohyoid and hyoglossus muscles:?

- A. Submandibular duct.
- B. Submandibular ganglion.
- C. Submandibular gland superficial part.
- D. Hypoglossal nerve.
- E. Lingual nerve.

Ans:C

Q10: Which one of the following nerves is sensory and secretomotor to the parotid gland:?

- A. Lesser petrosal nerve.
- B. Glossopharyngeal nerve.
- C. Facial nerve.
- D. Greater petrosal nerve.
- E. Auriculotemporal nerve.

Ans: E

Q11: Patient who lost taste from the anterior part of his tongue?

- A. loss in facial nerve
- B. loss in hypoglossal nerve
- C. loss in oculomotor nerve

Ans: A

## Q12: Mark the wrong statement regarding the Mouth and Salivary Glands?

- A. general sensation from anterior 2/3 of the tongue carried via lingual nerve
- B. posterior third of the tongue drain its lymph in part to jugulodigastric lymph nodes
- C. Palatoglossal arch contains a muscle supplied by the hypoglossal nerve
- D. parotid gland divided into two parts by the facial nerve
- E. submandibular duct courses between mylohyoid and hyoglossus muscles

Ans: C

Q13: Which of the following is not a test for facial nerve?

- A- ask patient to close his eye
- B- to show his teeth
- C- to whistle
- D- to clench his teeth
- E- to blow

Ans: d

● ● ● ● ● —————



*Palate, pharynx  
& palatine tonsils*



————— ● ● ● ● ●



Q1:All of the following innervate the pharynx except?

- A. Maxillary nerve
- B. Vagus nerve
- C. Pharyngeal plexus
- D. Glossopharyngeal nerve
- E. Mandibular nerve

Ans:E

Q2: Which of the following cranial nerves doesn't carry sensations from the pharynx?

- A. Glossopharyngeal nerve
- B. Vagus nerve
- C. Trigeminal nerve
- D. Facial nerve
- E. At least two of the above

Ans:D

Q3: Which one of the following blood vessels usually causes post-operative bleeding after tonsillectomy?

- A. External palatine vein.
- B. Tonsillar branch of facial artery.
- C. Tonsillar branch of lingual artery.
- D. Tonsillar vein.
- E. Pharyngeal plexus of vein.

Ans: A

Q4:One of the following muscles is forming the palatine aponeurosis:?

- A. Levator veli palatini muscle.
- B. Tensor veli palatini muscle.
- C. Musculus uvula.
- D. Palato-pharyngeus.
- E. Glosso-pharyngeus.

Ans: B

Q5: All the following are correct about the palatine tonsil  
EXCEPT?

- A. It lies in the tonsillar sinus between two folds of mucosa
- B. Has sensory innervation from the lesser palatine nerve
- C. Has lymphatic drainage to the jugulodigastric lymph nodes
- D. The source of bleeding after tonsillectomy is usually the arterial blood supply
- E. Receives blood supply from the facial artery

Ans: D

Q6: About swallowing, all true except?

- A. composed of voluntary and involuntary phases.
- B. primary peristalsis is initiated at the pharynx
- C. secondary peristalsis is initiated in the esophagus by remnant of food in the esophagus.
- D. preceded by relaxation wave to open the lower esophageal sphincter.
- E. closure of epiglottis is voluntary

Ans:E

Q7:All of the following innervate the pharynx except?

- A. external laryngeal
- B. internal laryngeal
- C. glossopharyngeal nerve

Ans:A

Q8: About innervation of the pharynx, choose the wrong statement?

- A. Sensory innervations to the oropharynx is by vagus nerve
- B. Sensory innervations to the laryngopharynx is by nerve passes between middle and inferior constrictor muscle
- C. All the muscles of the pharynx are innervated by pharyngeal plexus except one
- D. The stylopharyngeus innervated by the glossopharyngeal nerve
- E. Sensory innervation to the nasopharynx is by maxillary nerve

Ans:A

Q9: All of the following are related to palatine tonsil except:?

- A. Fibrous capsule
- B. Internal jugular vein
- C. Superior constrictor muscle of the pharynx
- D. Tonsillar artery
- E. External palatine vein

Ans: B

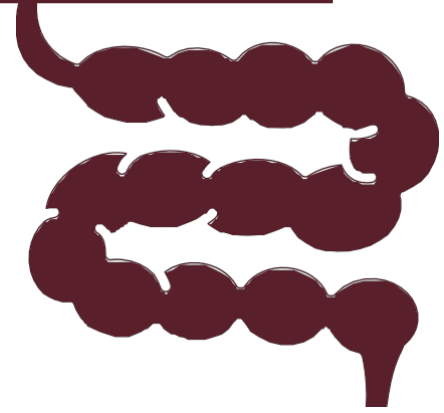
Q10:One of the following nerves pierces the wall of the pharynx between the middle and inferior constrictor muscles:?

- A. Glossopharyngeal nerve.
- B. Internal laryngeal nerve.
- C. External laryngeal nerve.
- D. Recurrent laryngeal nerve.
- E. Superior laryngeal nerve.

Ans: B

Q11: Which of the following muscles prevents the entry of air to the stomach?

Ans: cricopharyngeus



# *Esophagus & stomach*



Q1: Which of these relations in regards to the lesser sac is wrong?

- A. Foramen of Winslow -> right side of the lesser sac
- B. Gastrosplenic ligament -> left side of the lesser sac
- C. Lesser omentum -> posterior to the lesser sac
- D. Greater omentum -> anterior to the lesser sac
- E. Greater omentum -> posterior to the lesser sac

Ans: C

Q2: Which of the following relations is incorrect regarding the lower part of the esophagus?

- A. Left vagus nerve -> anterior to the esophagus
- B. Right pleura -> right to the esophagus
- C. Pericardium -> posterior to the esophagus
- D. Right vagus nerve -> posterior to the esophagus
- E. A+D

Ans: C

Q3: All of the following structures lie in the stomach bed except?

- A. Tail of the pancreas
- B. Splenic artery
- C. Splenic vein
- D. Left suprarenal gland
- E. None of the above

Ans: C

Q4: The lesser omentum contains all the following structures EXCEPT?

- A. The left gastric artery.
- B. The hepatic artery.
- C. Common bile duct.
- D. Branches of the vagus nerves.
- E. The right gastroepiploic artery.

Ans: E

Q5:wrong about greater omentum?

- A. between the layers, it contains the greater sac
- B. it has two layers of visceral peritoneum extending from the greater curvature of the stomach and beginning of the duodenum
- C. the two visceral layers also extend to envelop the transverse colon
- D. it contains two gastroepiploic vessels
- E. it is called the policeman of the abdomen

Ans:A

Q6: All the following are supplied by the celiac trunk except?

- A. stomach
- B. the third part of the duodenum
- C. pancreas

Ans: B

Q7:Innervation of the pylorus?

Anterior & posterior lantarjet nerves

Ans:

Q8: All of the following structures are part of the stomach bed except?

- A. pancreas
- B. spleen.
- C. left kidney
- D. celiac trunk
- E. transverse mesocolon

Ans: D

Q9: Select the wrong statement concerning the Pharynx and Esophagus?

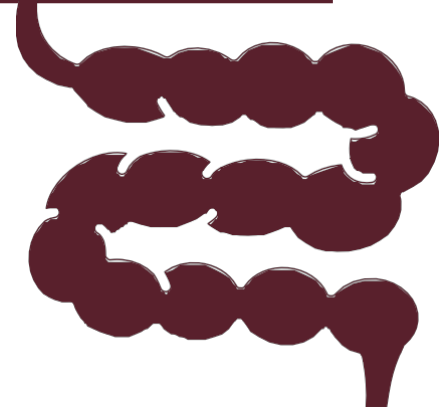
- A. pharynx extends from base of skull to lower border of cricoid cartilage
- B. pharynx supplied mainly by the ascending pharyngeal artery
- C. abdominal esophagus drains its venous blood into inferior vena cava
- D. thoracic esophagus pass through superior and posterior mediastinum
- E. piriform fossa in oropharynx is the common site of foreign body impaction

Ans: E

Q10: All are true about foramen of Winslow except?

- A. Superior: caudate process of caudate lobe of liver
- B. Inferior : 1st part of duodenum
- C. Posterior : portal vein
- D. Anterior: free margin of lesser omentum
- E. For communication between lesser and greater sac

Ans: C



# *Test bank*



Q1:choose the incorrect statement?

- A. The upper lip is formed during embryonic development by the fusion of the maxillary prominence and the medial nasal prominence
- B. Vermilion has modified form of skin, lined by modified keratinized stratified squamous epithelium
- C. palatine tonsil anterior fold is the palatoglossal fold, and posterior fold is the stylopharyngeal fold
- D. Vestibule surrounded by teeth medially
- E. All are correct

Ans: C

Q2:choose the incorrect statement?

- A. Palate roof is innervated by greater palatine and nasopalatine of maxillary
- B. Taste sensation in the posterior third of tongue comes from glossopharyngeal
- C. Sulcus terminalis divides the tongue into posterior and anterior parts
- D. Tongue has stratified squamous parakeratinized epithelium
- E. All are correct

Ans: E

Q3:choose the incorrect statement?

- A. All muscles of the tongue are innervated by hypoglossal nerve
- B. Intrinsic muscles of the tongue moves it forward
- C. Tongue is supplied by lingual, facial which is a branch from internal carotid
- D. Tongue veins drain into external jugular vein
- E. 2 or more are incorrect

Ans: E

Q4:choose the incorrect statement?

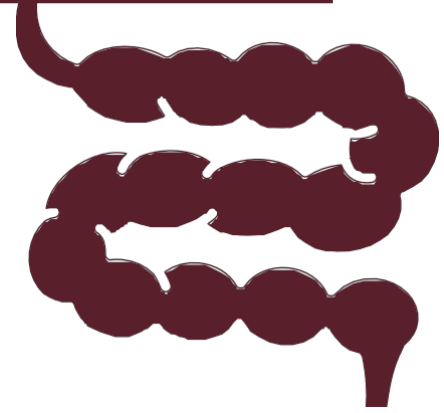
- A. Postganglionic sympathetic of submandibular: fibers originate from the superior cervical ganglion in the neck
- B. Wharton duct is related to parotid gland
- C. Submandibular ducts are ranged from 8-20
- D. Lingual artery is medial to sublingual gland
- E. 2 or more are incorrect

Ans: E

Q5: which nerve provide sensory to oropharynx?

- A. Vagus nerve
- B. Glossopharyngeal nerve
- C. Maxillary nerve
- D. Hypoglossal nerve
- E. Mandibular nerve

Ans: B



# *The small intestine*



Q1: Which part of the duodenum is related to the epiploic foramen?

- A. First part
- B. Second part
- C. Third part
- D. Fourth part
- E. None

Ans: A

Q2: All are intraperitoneal structures EXCEPT:

- A. Jejunum
- B. Ileum
- C. Transverse colon
- D. Second part of the duodenum
- E. Stomach

Ans: D

Q3: Wrong statement about mesentery of small intestine:

- A. Contains jejunal and ileal branches of SMA and SMV
- B. Suspends the small intestine from the posterior abdominal wall
- C. Root of mesentery directed from L1 to right sacroiliac joint
- D. Broad and fan-shaped
- E. Contains branches from inferior mesenteric artery

Ans: E

Q4: Wrong about ligament of Treitz:

- A. Attaches to the right crus of diaphragm
- B. Holds the DJ junction in place
- C. Ends at the ileocecal junction
- D. Located at L2
- E. Related to duodenojejunal flexure

Ans: C

Q5: Which structure is NOT posterior to the 1st part of the duodenum?

- A. Gastroduodenal artery
- B. Common bile duct
- C. Portal vein
- D. Hepatic artery
- E. Neck of pancreas

Ans: E

Q6: Which of the following is NOT a posterior relation of the 3rd part of the duodenum?

- A. Inferior vena cava
- B. Right psoas muscle
- C. Right ureter
- D. Aorta
- E. Superior mesenteric vessels

Ans: E

Q7: Which structure marks the beginning of the root of mesentery?

- A. Cecum
- B. Ascending colon
- C. Duodenojejunal flexure
- D. Transverse colon
- E. Right iliac fossa

Ans: C

Q8: Blood supply to lower duodenum is mainly from:

- A. Left gastric artery
- B. Superior pancreaticoduodenal artery
- C. Inferior pancreaticoduodenal artery
- D. Right gastric artery
- E. Splenic artery

Ans: C

Q9: What distinguishes jejunum from ileum?

- A. Smaller diameter
- B. Short vasa recta
- C. Simple arcades and prominent plicae
- D. Prominent Peyer's patches
- E. Higher fat content

Ans: C

Q10: Plicae circularis are best described as:

- A. Temporary folds of mucosa
- B. Muscular folds in stomach
- C. Longitudinal folds in colon
- D. Permanent folds of mucosa and submucosa
- E. Folds of peritoneum

Ans: D

Q11: Lymph from the jejunum and ileum ultimately drains into:

- A. Inferior mesenteric nodes
- B. Internal iliac nodes
- C. Superior mesenteric nodes
- D. Thoracic duct directly
- E. Para-aortic nodes

Ans: C

Q12: Which structure prevents reflux from cecum into ileum?

- A. Ileocecal valve
- B. Plicae circularis
- C. Peyer's patch
- D. Meckel's diverticulum
- E. Ligament of Treitz

Ans: A

Q13: The ligament of Treitz is attached to:

- A. Left renal vein
- B. Right crus of diaphragm
- C. Left crus of diaphragm
- D. Celiac trunk
- E. Superior mesenteric artery

Ans: B

Q14: Which is true about Meckel's diverticulum?

- A. Remnant of the allantois
- B. Located in jejunum
- C. Contains gastric or pancreatic tissue
- D. Found in cecum
- E. Causes immediate bleeding

Ans: C

Q15: Blood supply to ileum is via:

- A. Middle colic artery
- B. Right colic artery
- C. Ileocolic and SMA branches
- D. Left gastric artery
- E. Splenic artery

Ans: C

Q16: All of the following organs are retroperitoneal, except:

- A. 3rd part of the duodenum
- B. Descending colon
- C. Pancreas
- D. Appendix
- E. Ascending colon

Ans: D

Q17: All of the following statements are true except:

- A. The jejunum has longer vasa recta than the ileum
- B. The ileum has more numerous arcades than the jejunum
- C. All parts of the small intestines are intraperitoneal
- D. The jejunum has larger plicae circularis than the ileum
- E. A+B

Ans: C

Q18: Which of the following anatomical relations regarding the second part of the duodenum is correct?

- A. Fundus of gallbladder → posterior to the second part of duodenum
- B. Ascending colon → anterior to the second part of duodenum
- C. Common bile duct → medial to the second part of duodenum
- D. Right spleen → lateral to the second part of duodenum
- E. None of these relations is correct

Ans: C

Q19:All the following are supplied by the celiac trunk EXCEPT:

- A. Stomach
- B. Third part of duodenum
- C. Pancreas
- D. Liver
- E. Spleen

Ans: B

Q20: Duodenum–jejunum junction is located at the level of which lumbar vertebra?

- A. L1
- B. L2
- C. L3
- D. L4
- E. None of the above

Ans: B

Q21: What nerves are affected with pyloroplasty?

- A) Vagus nerve and its branches
- B) Anterior and posterior nerves of Latarjet
- C) Greater splanchnic nerve
- D) Iliohypogastric and ilioinguinal nerves
- E) Femoral nerve and obturator nerve

Ans:B

Q22: A patient has undergone splenectomy, during which the splenic artery was ligated. Which of the following arteries is not affected by this ligation?

- A. Inferior pancreaticoduodenal artery
- B. Short gastric artery
- C. Left gastroepiploic artery
- D. Pancreatic branches
- E. Splenic branches to the stomach

Ans: A

Q23: Which of the following is posterior to the first part of duodenum?

- A. Right gastroepiploic artery
- B. Kidney
- C. Gall Bladder
- D. Liver
- E. Aorta

Ans: A

Q24: All of the following are posterior to duodenum except?

- A. Portal vein
- B. Hepatic artery
- C. IVC
- D. origin of inferior mesentric artery
- E. Superior mesentric artery

Ans: E

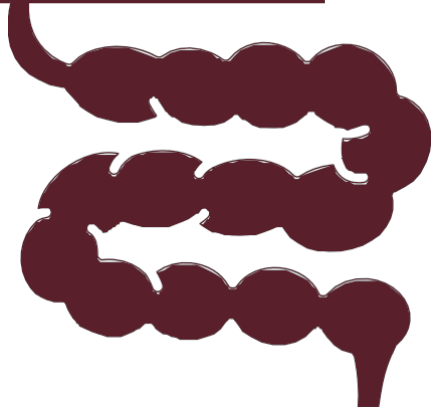
Q25: All of the following are true about jejunum innervation except?

- A. Preganglionic sympathetic comes from thoracic origin
- B. Preganglionic parasympathetic synapse with myentric plexus
- C. Postganglionic parasympathetic control secretion
- D. Preganglionic sympathetic synapse with celiac ganglion


Ans: D

● ● ● ● ●

---



***Anterior abdominal  
wall, inguinal canal &  
peritoneum***



---

● ● ● ● ●

Q1: Concerning the spermatic cord, all the following statements are correct EXCEPT:

- A. The pampiniform plexus of veins which causes varicocele is more common on left side
- B. Covered by three spermatic fascia
- C. The testicular vein formed at superficial inguinal ring
- D. Contains the genital branch of genitofemoral nerve which innervates the cremasteric muscle
- E. Contains three types of nerves

Ans: C

Q2: An injury to the ilioinguinal nerve might be associated with:

- A. Direct inguinal hernia
- B. Indirect inguinal hernia
- C. Lumbar hernia
- D. Internal hernia
- E. Incisional hernia

Why?

In a direct inguinal hernia, the hernia sac pushes through the posterior wall of the inguinal canal (Hesselbach's triangle) → this area is closer to the nerve, so it's more likely to be injured or compressed.

In an indirect inguinal hernia, the sac passes through the deep inguinal ring and travels *within* the spermatic cord → relatively less direct contact with the ilioinguinal nerve.

Ans: A

Q3: During surgery for the inguinal hernia in a 24-year-old male, which statement is wrong?

- A. Division of ilioinguinal nerve causes direct hernia
- B. Division of genital branch of genitofemoral nerve causes loss of cremasteric reflex
- C. Artery to vas deferens is part of the spermatic cord
- D. Deep ring is reinforced by conjoint tendon
- E. External oblique aponeurosis must be divided for access

Ans: D

Q4: Direct inguinal hernia, all are correct EXCEPT:

- A. Sac lies medial to inferior epigastric artery
- B. Common in elderly
- C. Usually bilateral
- D. Sac never reaches scrotum
- E. In superficial ring test, impulse is felt on tip of finger

Ans: E

Q5: Which of the following statements is false?

- A. Direct hernias usually reach scrotum
- B. Indirect hernia neck is lateral to inferior epigastric artery
- C. To reduce direct hernia, press backward
- D. Direct hernia neck is wider than indirect
- E. Direct hernia is common in elderly

Ans: A

Q6: All following statements about direct inguinal hernia are correct  
EXCEPT:

- A. Caused by iliohypogastric nerve injury
- B. Usually bilateral
- C. Lies medial to inferior epigastric vessels
- D. Sac never passes through superficial ring
- E. Common in old age

Ans:D

Q7: Wrong about direct inguinal hernia:

- A. Bulges from superficial inguinal ring
- B. Medial to inferior epigastric artery
- C. Common in elderly
- D. Sac never reaches scrotum
- E. Often bilateral

Ans: A

Q8: Which of the following is wrong about indirect hernias?

- A. Can reach the scrotum
- B. Occurs through the inguinal canal
- C. Caused by the inguinal nerve
- D. Occurs in the young
- E. Pulse is felt at the tip of the finger in superficial inguinal ring test

Ans: C

Q9: All of the following form the roof and posterior wall of the inguinal canal EXCEPT:

- A. Lacunar ligament
- B. Conjoint tendon
- C. Fascia transversalis
- D. Internal oblique
- E. Transversus abdominis

Ans: A

Q10: You examine a man who has a hernia in the deep ring. The correct diagnosis is:

- A. It is a direct hernia
- B. It is located medially superior to the pubic tubercle
- C. Ilioinguinal nerve is affected
- D. It involves the rectus sheath
- E. It is a femoral hernia

Ans: B

**Q11:** All the following statements concerning indirect inguinal hernia are correct EXCEPT:

- A. Injury to the ilioinguinal nerve may cause the hernia
- B. It is usually unilateral in adults
- C. The hernial sac passes through the superficial inguinal ring
- D. Common in young age
- E. It lies lateral to inferior epigastric vessels

Ans: A

Q11: A 32-year-old man undergoes a vasectomy, which of the following statements most applies to the scrotum?

- A. It is innervated by ilioinguinal and genitofemoral nerves
- B. Its dartos tunic is continuous with the perineal membrane
- C. The venous blood drains primarily into the renal vein on the left
- D. Its lymphatic drainage is primarily into lumbar (aortic) nodes
- E. It receives blood primarily from the testicular artery

Ans: A

Q12:A patient who had gallstones in the hepatopancreatic ampulla which led to pancreatic rupture which caused peritonitis, which of the following spaces do the pancreatic contents enter first?

- A. Right paracolic gutter
- B. Lesser sac
- C. Greater sac
- D. Subphrenic space
- E. Pelvic cavity

Ans: B

Q13: You examine a man who has a hernia in the deep inguinal ring.  
Which of the following is most correct?

- A. It is a direct hernia
- B. It is located medially superior to the pubic tubercle
- C. Ilioinguinal nerve is affected
- D. It is a femoral hernia
- E. It is an indirect inguinal hernia

Ans: E

Q14:Urine extravasation due to penile urethra rupture may spread into which structure?

A. Deep perineal pouch

B. Pelvic cavity

C. Ischiorectal fossa

D. Thigh

E. Scrotum

Ans: E

Q15: Which of the following matches is incorrect?

- A. External oblique → superficial inguinal ring
- B. Internal oblique → cremasteric fascia
- C. Transversus abdominis → pectineal ligament
- D. Rectus abdominis → tendinous intersections
- E. All the matches are correct

Ans: C

Q16: The aponeurosis of the external oblique contributes to all the following EXCEPT:

- A. Conjoint tendon
- B. Superficial inguinal ring
- C. Inguinal ligament
- D. Peritoneal ligament
- E. Lacunar ligament

Ans: D

Q17: Superficial inguinal ring is reinforced by which one of the following:

- A. Conjoint tendon
- B. Internal oblique aponeurosis
- C. Transversalis fascia
- D. Inguinal ligament
- E. External oblique aponeurosis

Ans: A

Q18: Which of the following is wrong about indirect hernias?

- A. Can reach the scrotum
- B. Occurs through the inguinal canal
- C. Caused by the inguinal nerve
- D. Occurs in the young
- E. Pulse is felt at the tip of the finger in a superficial inguinal ring test

Ans: c

Q19:One of the following statements is incorrect about the part of rectus sheath below the anterior superior iliac spines:

- A. The posterior part is made of transversus abdominis muscle and fascia transversalis
- B. Below the anterior superior iliac spines, the rectus sheath is incomplete posteriorly
- C. The rectus abdominis muscle is in direct contact with the transversalis fascia below the anterior superior iliac spines

Ans: a

Q20:Urine Spread – Where NOTIn case of ruptured urethra, where does urine NOT spread?

- A. Scrotum
- B. Penis
- C. Anterior abdominal wall
- D. Coccyx region
- E. All of the above can be involved

Ans: D

Q21:At the level of the umbilicus, what is anterior to rectus sheath?

- A. External oblique aponeurosis
- B. . Internal oblique aponeurosis
- C. Transversus abdominis aponeurosis
- D. . A + B
- E. . All of the above

Ans: E

Q22: In stab wound to the right of umbilicus, which structure is unlikely to be injured?

- A. External oblique aponeurosis
- B. Transversus abdominis
- C. Rectus abdominis
- D. Iliohypogastric nerve
- E. Internal oblique muscle

•the nerve's pathway (lower anterior abdominal wall region)

Ans: D

Q23:All of the following form the roof and posterior wall of the inguinal canal EXCEPT:

- A. Lacunar ligament
- B. Conjoint tendon
- C. Fascia transversalis
- D. Internal oblique
- E. Transversus abdominis

Ans: A

Q24: Which of following is not correct about abdominal wall?

A-the thoracic nerves emerge between internal oblique and external oblique

B-below the arcuate line, the transversus fascia is the posterior wall of rectal sheath

C-rectal sheath contains two epigastric vessels and two muscles

Ans:A

Q25:24-old male underwent a direct hernia procedure, which of the following is incorrect?

A-the spermatic cord can be palpated by finger

B-division of genital branch of genitofemoral branch prevent cremasteric reflex

C-division of ilioinguinal nerve leads to direct hernia

D-direct hernia involves deep ring

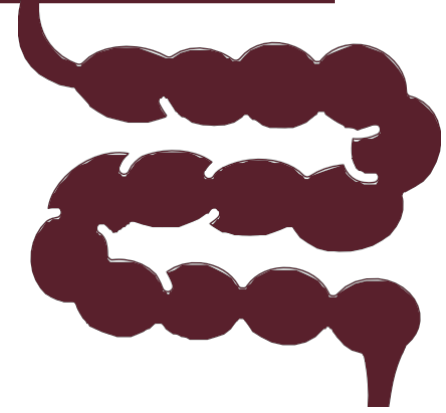
Q26: Choose the wrong statement in the following:

- A. The posterior surface of the pancreas is covered by the peritoneum of the lesser sac.
- B. The inferior surface of the pancreas is covered by peritoneum of the greater omentum.
- C. The anterior surface is covered by peritoneum of post. Wall of lesser sac.
- D. The formation of the portal vein occurs behind the neck of pancreas.

And: A

Q27: As complication of appendicitis the most common site of abscess collection is one of the following:

- a. Left iliac fossa.
- b. Morrison's pouch.
- c. Lesser sac.
- d. Perineum.
- e. Left sub phrenic space.



# *Large intestine*



Q1: Patient has laceration of his superior mesenteric artery immediately distal to the origin of middle colic artery. Which one of the following organs may become ischemic?

- A) Ascending colon.
- B) Duodenum.
- C) Descending colon.
- D) Transverse colon.
- E) Pancreas.

Ans: A

Q2: The preganglionic parasympathetic innervation for the hindgut will be provided by:

- A. Sacral spinal nerves.
- B. Lumbar splanchnic nerves.
- C. Greater splanchnic nerves
- D. Lesser splanchnic nerves.
- E. Vagus nerve.

Ans: A

Q3: Which of the following is wrong about the colon histology?

Answer: Presence of Peyer's patches

Ans:

Q4: During development, the midgut artery appears markedly narrowed at its origin. Which one of the following organs is derived from midgut and may receive inadequate blood supply?

- A) Rectum.
- B) Gallbladder.
- C) Descending colon.
- D) Ascending colon.
- E) Stomach.

Ans: D

Q5: Mucosa of the large intestine is characterized by all the following EXCEPT:

- a. Lymphatic nodules are frequently seen in lamina propria.
- b. Mucosa is thicker than that of the small intestine it contains crypts of Lieberkühn but no villi.
- c. Muscularis mucosa is well developed.
- d. The cells of the crypts of Lieberkühn in lamina propria are the same as those of the small intestine.
- e. Lining epithelium is simple columnar absorbing cells with numerous goblet cells.

Ans: D

# رسالة من الفريق العلمي:

الدنيا عنوانها:

﴿كُلٌّ مِنْ عَلَيْهَا فَإِنْ﴾

والآخرة عنوانها:

﴿خَالِدِينَ فِيهَا حَسَنَتْ مُسْتَقَرًّا وَمُقَامًا﴾

فَاعْمَلْ لِمَا شِئْتَ

سُورَةُ الْأَنْبِيَاءِ

بِسْمِ اللَّهِ الرَّحْمَنِ الرَّحِيمِ

فَنَادَى فِي الظُّلُمَاتِ أَنْ لَا إِلَهَ إِلَّا أَنْتَ سُبْحَانَكَ إِنِّي  
كُنْتُ مِنَ الظَّالِمِينَ ﴿٨٧﴾ فَاسْتَجَبْنَا لَهُ وَوَجَّيْنَاهُ  
مِنَ الْغَمِّ وَكَذَلِكَ نُبَيِّحُ الْمُؤْمِنِينَ ﴿٨٨﴾

قل إن الأمر كله لله

وقل رب زدني علماً

وَلَا تَيْأَسُوا مِنْ رُوحِ اللَّهِ

﴿ وَلَا تَيْأَسُوا مِنْ رُوحِ اللَّهِ ﴾

مهما كنت في هم وغم وضيق

ثق بالله واستبشر خيراً

﴿ وَلَا تَيْأَسُوا مِنْ رُوحِ اللَّهِ ﴾

فإن لطفه عاجل وفرجه قريب وكرمه واسع

فَعَسَى أَنْ تَكْرَهُوا شَيْئًا

وَيَجْعَلَ اللَّهُ فِيهِ خَيْرًا كَثِيرًا.

﴿٣٨﴾ وَأَنْ لَيْسَ لِلْإِنْسَانِ إِلَّا مَا سَعَى ﴿٣٩﴾ وَأَنْ سَعِيَهُ سَوْفَ يُرَى

﴿٤٠﴾ ثُمَّ يُجْزَاهُ الْجَزَاءَ الْأَوْفَى ﴿٤١﴾ وَأَنْ إِلَى رَبِّكَ الْمُنْتَهَى ﴿٤٢﴾

﴿٤٣﴾ وَأَنْهُ هُوَ أَضْحَكَ وَأَبْكَى ﴿٤٤﴾ وَأَنْهُ هُوَ آمَاتَ وَأَحْيَا ﴿٤٤﴾



وقل رب زدني علماً

For any feedback, scan the code or click on it.



Corrections from previous versions:

Versions	Slide # and Place of Error	Before Correction	After Correction
V0 → V1			
V1 → V2			