

Neoplasia 2023/24

lecture 5

Dr Heyam Awad

MD, FRCPath

ILOS

- To understand the concept of the hallmarks of cancer and that they are phenotypic changes needed in all cancer cells.
- To list the tumor enablers
- To understand the role of host cells in carcinogenesis
- In depth understanding of the first hallmark: self sufficiency in growth signals.

Intro

- Cancer occurs due to successful breach of anticancer mechanisms, i.e. of regulatory mechanisms in our cells and tissues that prevent uncontrolled proliferation.
- Each cancer cell needs to acquire certain phenotypic characteristics to become malignant.
- Of course these phenotypic characteristics reflect genetic mutations (or alterations)
- The phenotypic characteristics needed for cancer cells to survive are called : **the hallmarks of cancer.**

Hallmarks of Cancer

- Hallmarks of cancer: changes in cell physiology resulting from genetic changes that result in cancer.

- FOR CANCER TO DEVELOP: we need 8 characteristics (hallmarks) plus 2 enabling characteristics and the correct microenvironment.
- All the above are acquired as mutations or epigenetic alterations accumulating overtime
- So: **no** single mutation is enough to cause cancer.

- Carcinogenesis is a **multistep** process.
- Each step results from a genetic change
- Each genetic change results in acquiring a certain phenotype (one of the hallmarks)
- There is no specific sequence of acquiring these phenotypes... the main issue is to acquire them all

Hallmarks of cancer

- Eight hallmarks
- 1. self sufficiency in growth signals
- 2. insensitivity to growth inhibitory signals
- 3. evasion of cell death
- 4. limitless replicative potential
- 5. sustained angiogenesis
- 6. ability to invade and metastasize
- 7. reprogramming of metabolism
- 8. evasion of the immune system

Two enablers

- **Enablers** (help in the tumorigenesis process and set the right conditions for genetic changes to develop)
- 1. genomic instability
- 2. inflammation

- **Tumor microenvironment**

- Tumors need a suitable environment to flourish.
- This is obtained from the host cells: Stromal cells, mainly fibroblasts and pericytes

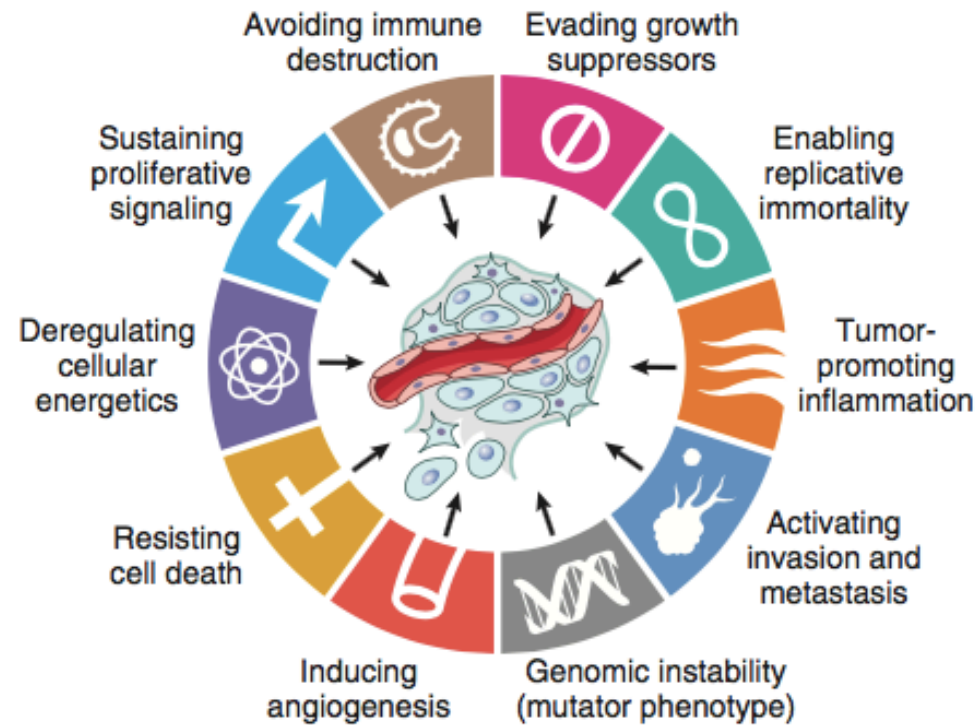


Fig. 6.17 Eight cancer hallmarks and two enabling factors (genomic instability and tumor-promoting inflammation). Most cancer cells acquire these properties during their development, typically due to mutations in critical genes. (From Hanahan D, Weinberg RA: *Hallmarks of cancer: the next generation*. Cell 144:646, 2011.)

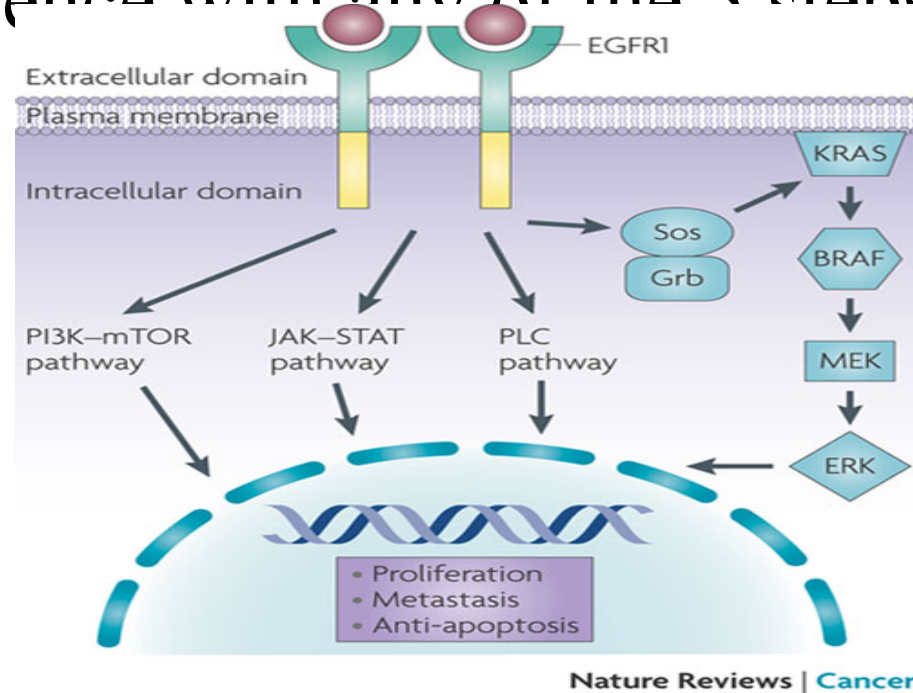
1. Self sufficiency in growth signals

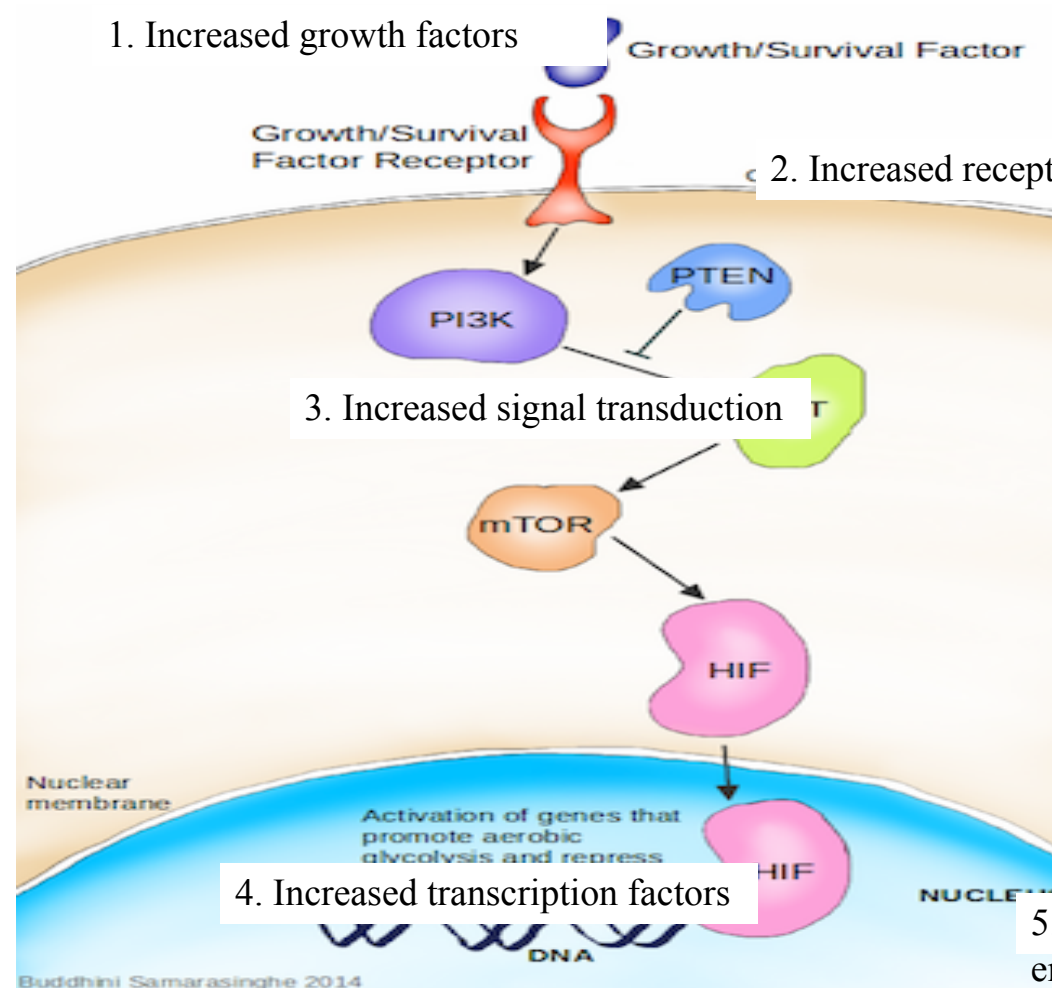
- Tumors proliferate regardless of the normal regulatory mechanisms.
- This is achieved by mutations in proto-oncogenes
- Oncogenes cause increased growth by increasing oncoproteins which act as growth factors, growth factor receptors, transcription factors..etc

Physiologic cell proliferation

- 1. growth factor binds to its receptor
- 2. this causes transient limited activation of the receptor
- 3. the activated receptor activates signal transducing proteins on the inner leaflet of the plasma membrane and the transduced signal is transmitted through the cytosol to the nucleus
- 4. activation of nuclear regulatory factors that regulate DNA transcription
- 5. entry into cell cycle

Increased growth can happen if there is interference with any of the 5 steps, in the previous slide.





Growth factors

- Some tumors produce their own growth factors, ie factors they respond to.
- This creates an autocrine loop
- Eg glioblastomas produce PDGF and express its receptor

Growth factors

- Tumor cells can interact with their stroma to produce growth factors.
- This is an example of how microenvironment (interaction with host cells including stromal cells) can help tumors to grow.

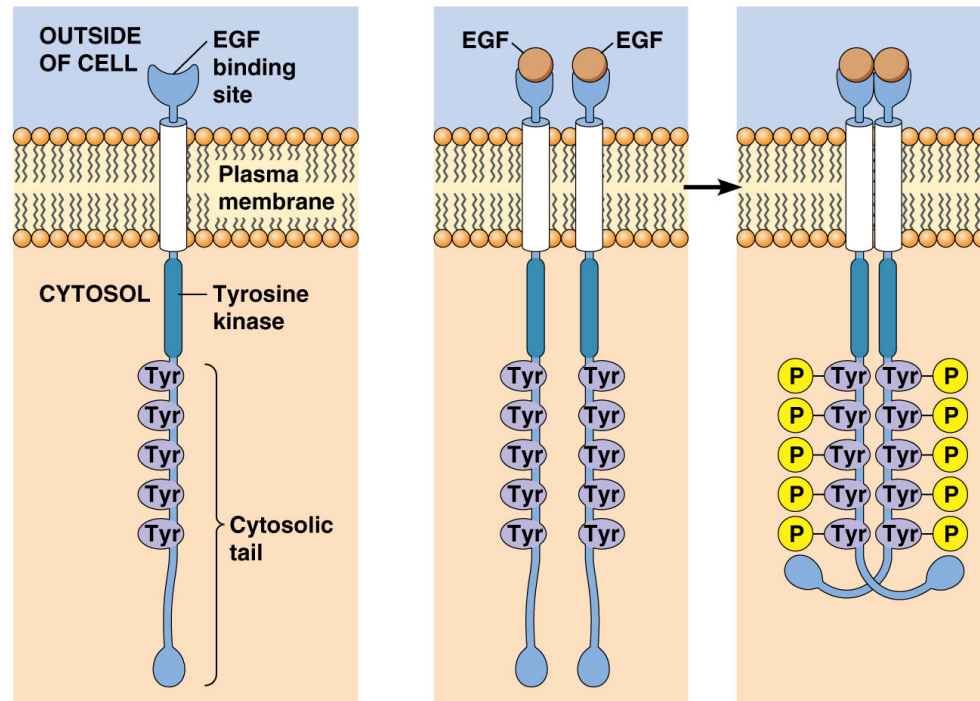
GF receptors

- GF receptors can increase cell proliferation in two situations:
- 1. **Overexpression** of the receptor .. So, Receptor is hyper responsive to GF even in levels that don't normally trigger proliferation.
- 2. **Mutant receptor proteins**. So the receptor itself is mutated and acquires a configuration that is always stimulated. This causes continuous mitogenic signal even in the absence of GF.

Remember that when a GF (or indeed any ligand) binds to its receptor, this causes conformational changes in the receptor proteins, so its shape changes and this change is what activates the receptor.

If there is a mutation that causes conformational change resulting in the receptor's shape being in the active state, then we don't need any stimulator for the receptor to function! It's in the alert. functioning state

Notice the shape change and dimerization of this receptor when attached to its ligand.



(a) Structure of the epidermal growth factor (EGF) receptor

(b) Activation of the EGF receptor

Amplification of GF receptor/ example

- Gene encoding Her2/neu is amplified in 25-30% of breast cancers and adenocarcinoma of lung, ovary and salivary gland
- High level of HER2/Neu protein in breast cancer worsens prognosis (results in more proliferation)
- Anti Her2 antibodies are used as a treatment in breast cancer in patients whose tumours are positive for Her2 (i:e those who have the Her 2 amplification)

Signal transducing proteins

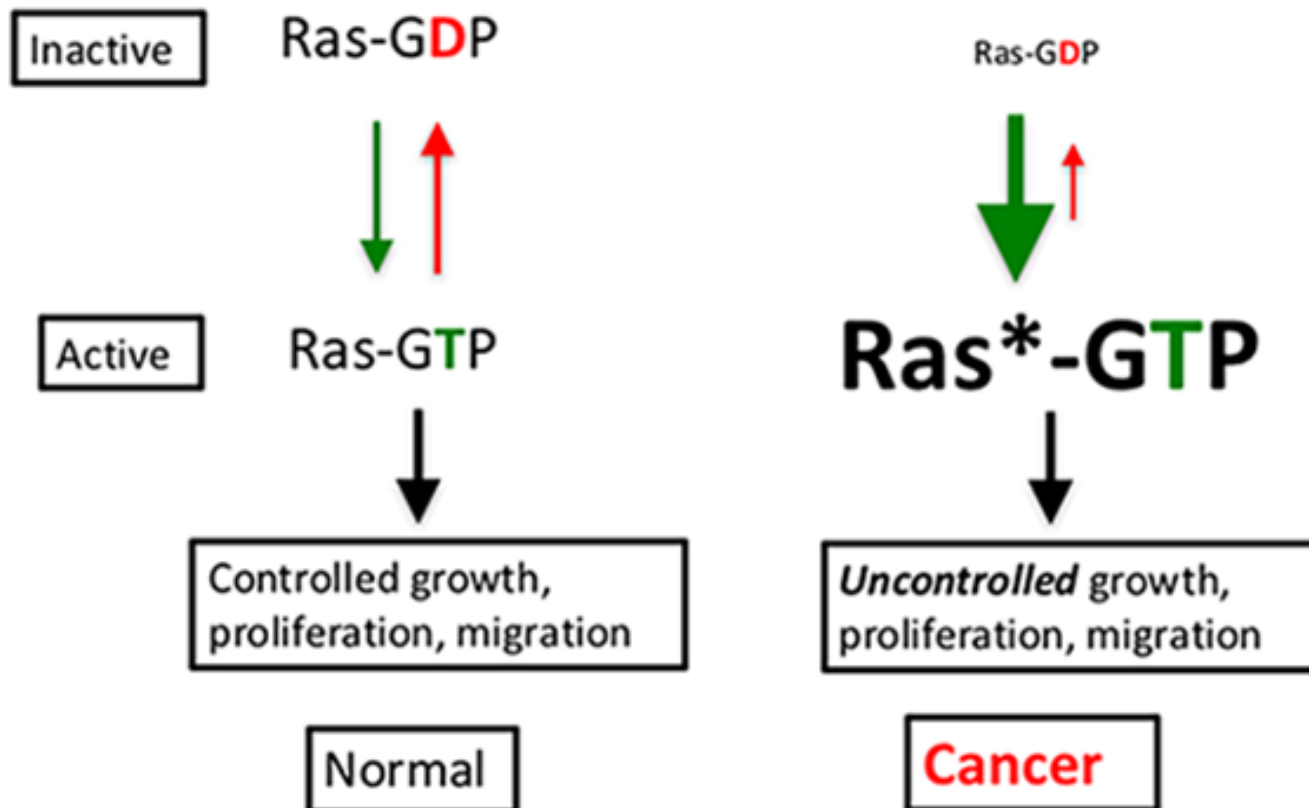
- Main signal transducing proteins involved: RAS and ABL

RAS

- *RAS* is the most commonly mutated oncogene in humans
- 30% of human cancers contain *RAS* mutation
- Even higher incidence in colon and pancreatic carcinomas

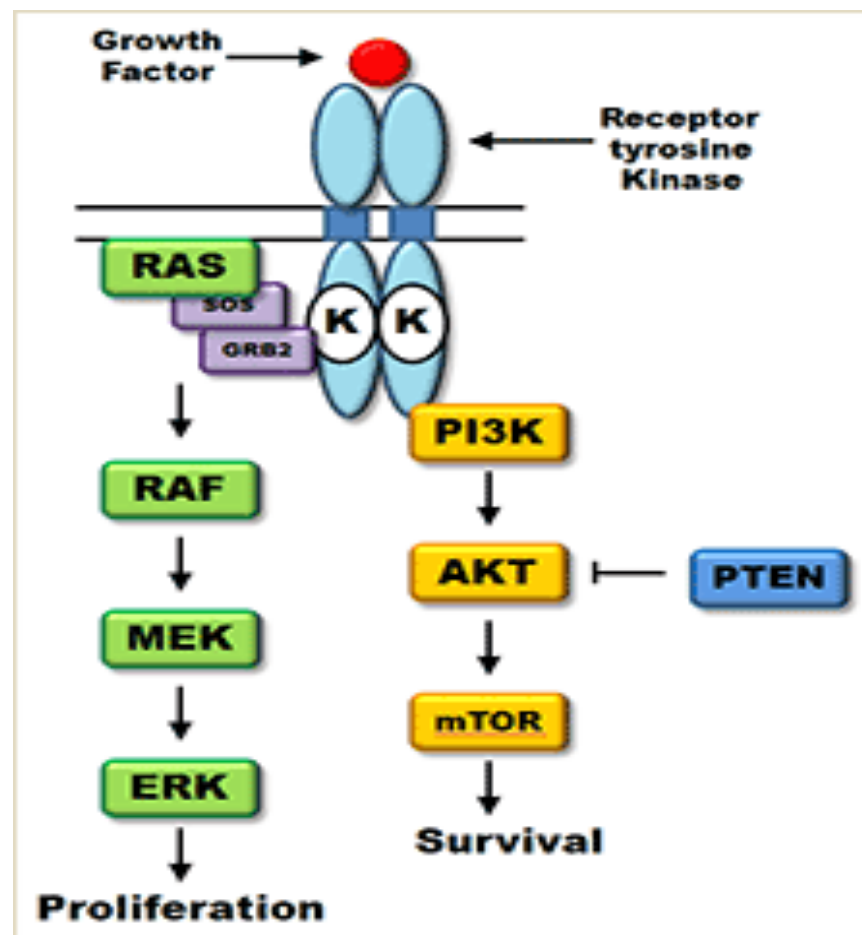
How does RAS function normally?

- RAS is a small protein that binds GDP and GTP (it's a G protein)
- It is inactive with GDP binding.
- If a growth factor binds to a receptor.. GDP is phosphorylated to GTP..
- This Activates RAS
- Activation is short lived as GTPase hydrolyses GTP to GDP
- GTPase activating proteins (GAPs) prevent over activation of RAS, so they act as brakes of RAS activation.



- Activated RAS.. Sends messengers to the nucleus by two pathways (see next slide)
- 1. RAF.. MAPK
- 2. PI3K..AKT..mTOR

- If 1 or 2 mutated.. Can mimic RAS effect
- Eg RAF mutated in 60% of melanomas



RAS

RAS is stimulated when a growth factor binds to its receptor.

This binding causes phosphorylation of GDP to GTP.

GTP activates RAS

Activated RAS acts via two pathways to send signals to the nucleus

1. mTOR pathway.
2. RAF- MAPK pathway

These two pathways send messages to the nucleus to express transcription factors that allow cells to enter cell cycle and proliferate.

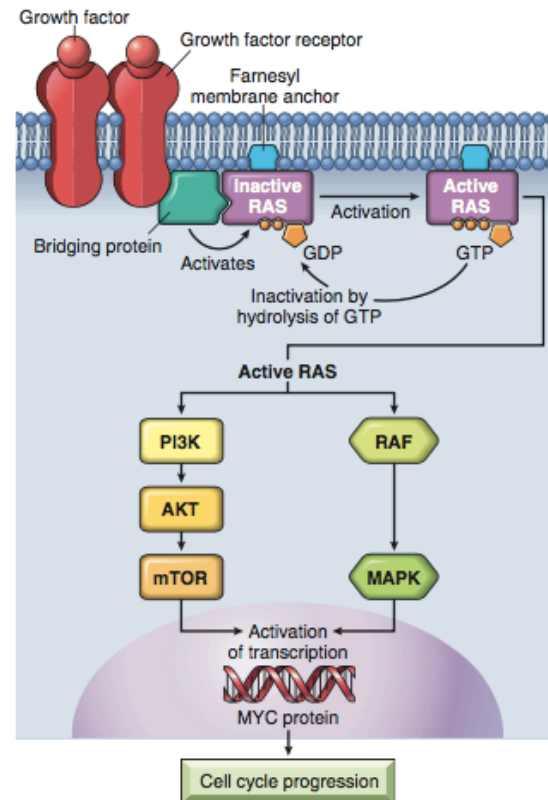


Fig. 6.18 Model for action of RAS. When a normal cell is stimulated through a growth factor receptor, inactive (GDP-bound) RAS is activated to a GTP-bound state. Activated RAS transduces proliferative signals to the nucleus along two pathways: the so-called "RAF/ERK/MAP kinase pathway" and the PI3 kinase/AKT pathway. GDP, Guanosine diphosphate; GTP, guanosine triphosphate; MAP, mitogen-activated protein; PI3, phosphatidylinositol-3.

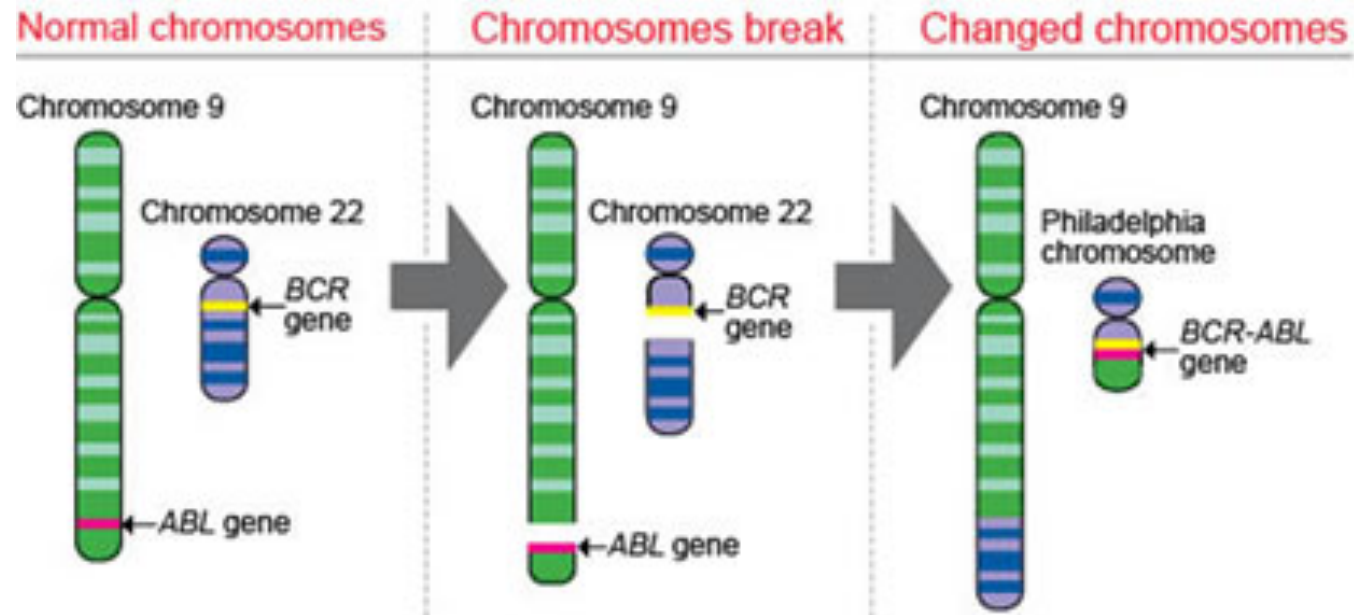
How RAS is activated (mutated)

- **Point mutation in an amino acid residues within the GTP binding pocket **or** in the enzymatic region of GTP hydrolysis**
- **Both result in defective hydrolysis.. Leading to trapped RAS in active phosphorylated GTP bound RAS**

ABL

- Proto-oncogene with tyrosine kinase activity regulated by internal negative regulatory domain
- ABL-BCR translocation.. Results in a hybrid gene
- The hybrid gene produces novel tyrosine kinase which is always active and stimulating proliferation...This is the Philadelphia chromosome we talked about previously.
- ABL-BCR pathway activates all the downstream signals of ras

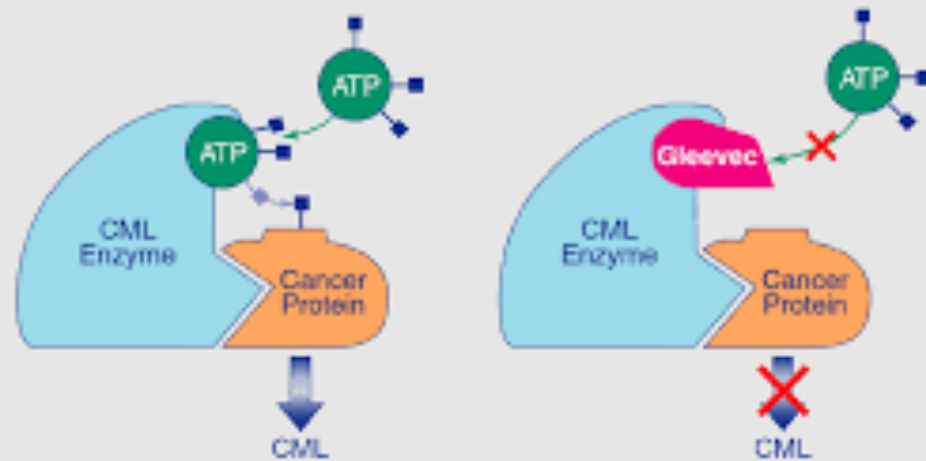
Philadelphia chromosome



- CML = chronic myelogenous leukemia : t(9;22)= Philadelphia chromosome. ABL-BCR fusion gene....tyrosine kinase which is always turned on.
- Kinase inhibitors can be used to treat CML
- Imatinab/gleevec .. Inhibits the kinase and treats the leukemia
- = targeted therapy



Gleevec: HOW IT WORKS



Nuclear transcription factors

- Most commonly involved in human cancers: MYC

myc

- Can activate or repress expression of other genes
- Activates cyclins and cyclin dependent kinases CDK (so cells enter cell cycle and divide)
- Myc also inhibits cyclin dependent kinase inhibitors (CDKI)
- These cyclins, CDK, CDKI play a role in entry to cell cycle, which we will discuss in detail in this lecture.

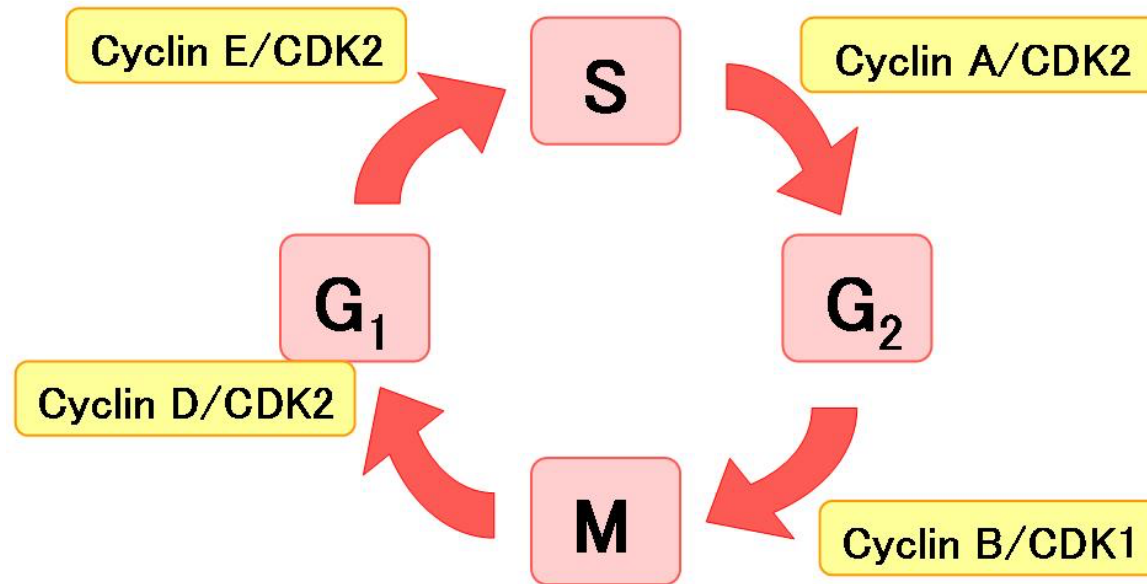
Entry into cell cycle

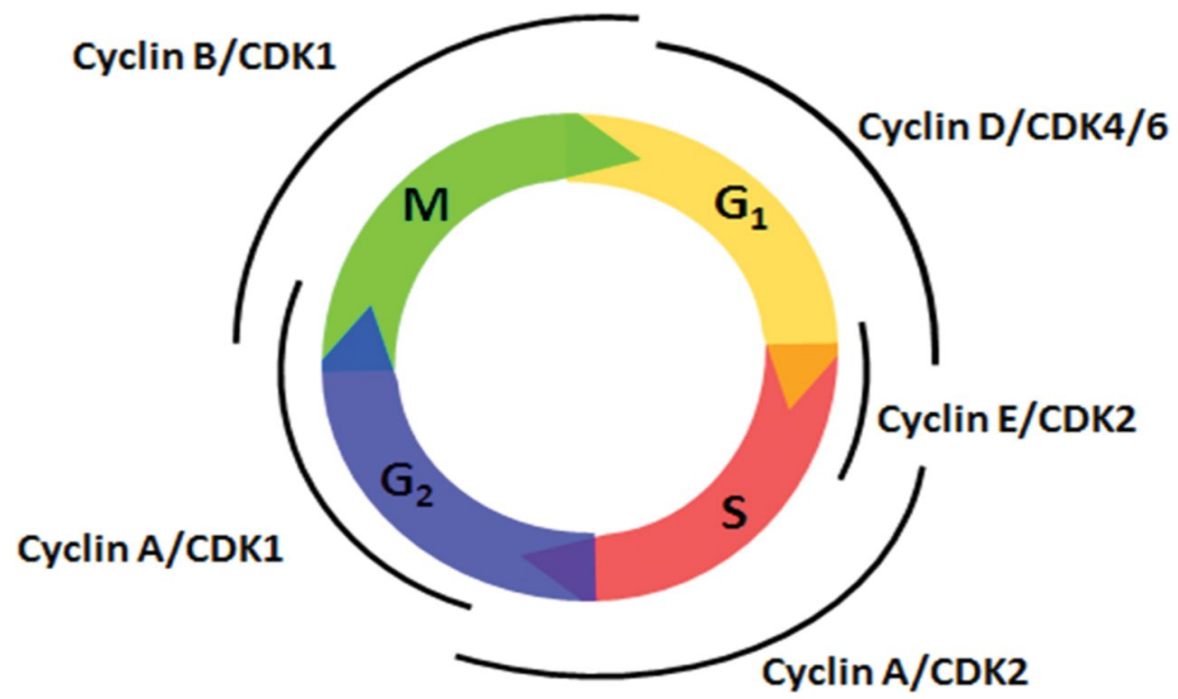
- All the stimuli mentioned till now aim for quiescent cells to enter the cell cycle .
- Each phase in the cell cycle depends on successful completion of the previous one
- Cycle stops when essential gene function is lost

cyclins

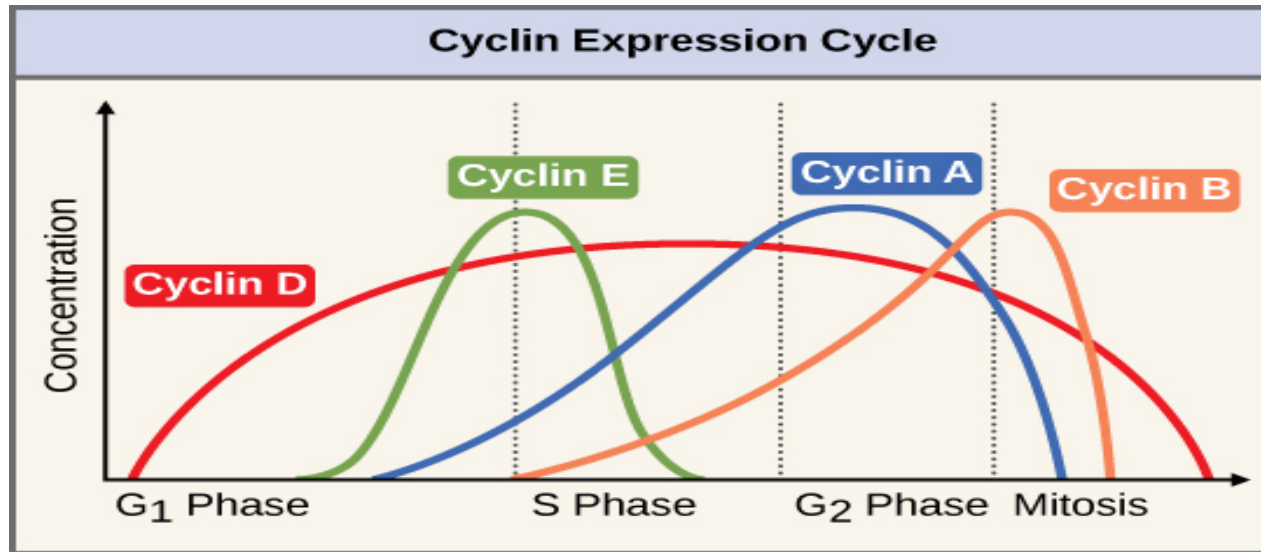
- Progression through cell cycle, especially G1-S is regulated by proteins called **cyclins**
- Cyclins activate kinases CDK (cyclin dependent kinases)
- Cyclin and CDK **form complexes** that phosphorylate target proteins that drive the cell through the cell cycle.
- Cyclins : D, E, A , B (they appear in this sequence)

Cell Cycle and Cyclin-CDK complex





The DEAB sequence of cyclins !



- SO: cyclin/CDK complexes cause proliferation.
- These are inhibited by cyclin dependent kinase inhibitors (CDKI)
- CDKI important for enforcing the checkpoints and delaying cell cycle.

- Mutations causing increased cyclins or CDK cause self sufficiency in growth signals.
- Mutations inhibiting CDKI will cause increased growth.
- Examples: cyclin D is activated in several tumors mainly lymphomas.

Summary 1/3

- Transformed cells acquire several mutations resulting in several phenotypes.
- There are 8 phenotypes needed in each transformed cell and these are called the hallmarks of cancer.
- All these hallmarks must be gained through mutations, but there is no specific sequence for acquiring them.
- We don't need 8 mutations for the 8 phenotypes as one mutation might cause more than phenotype.
- these 8 are: self sufficiency of growth factors, insensitivity to growth inhibitory signals, evasion of cell death and the immune system, changes in metabolism, immortality , sustained angiogenesis and ability to invade and metastasize.

Summary 2/3

- Self sufficiency in growth signals can occur through increased growth factors, growth factor receptors, signal transduction proteins, transcription factors or cell cycle stimulators.
- GF can be synthesized by tumor cells or host stromal cells.
- GF receptors can be activated via overexpression or changes in their architecture that makes them active even without binding to GF.
- Signal transduction can increase via increase in any protein involved in second messengers that convey growth signals to the nucleus. These include RAS and ABL plus their downstream protein pathways (BRAF- MAP kinase and MTOR pathways)
- RAS is the most commonly mutated oncogene in humans.
- RAS is a G protein that is stimulated upon phosphorylation of GTP to

Summary 3/3

- ABL is a protooncogene that can be stimulated via translocation (9;22) with formation of ABL-BCR fusion gene that encodes a kinase which is active and causes cell proliferation. This causes a leukemia that can be treated by blocking the kinase.
- Cell cycle is stimulated by cyclins/ Cyclin dependent kinase(CDK) complexes. Increase in Cyclins or CDK can transform cells.
- Cyclin/CDK complexes are normally regulated by CDK inhibitors.. A decrease in the inhibitors can also transform cells.

Test yourself

- The questions to follow are from webpath website, it's a very good source of pathology MCQ questions:

<https://library.med.utah.edu/WebPath/EXAM/EXAMIDX.html>

- My aim here is to show you how long, seemingly difficult questions are actually very easy. Just know your concepts and practice how to deal with these questions: let's try..

- A 73-year-old man has an episode of hematemesis. Upper GI endoscopy reveals an irregular 4 cm gastric antral ulceration. Biopsies are performed and microscopically reveal adenocarcinoma. Molecular analysis shows DNA hypermethylation of the CDKN2 complex. Through which of the following mechanisms has this abnormal gene expression most likely occurred?
- A Amplification
- B Epigenetic alteration
- C Growth factor binding
- D Point mutation
- E Reduced miRNA expression

answer

- A 73-year-old man has an episode of hematemesis. Upper GI endoscopy reveals an irregular 4 cm gastric antral ulceration. Biopsies are performed and microscopically reveal adenocarcinoma. Molecular analysis shows DNA hypermethylation of the CDKN2 complex (this is the only relevant piece of information. If you know that hypermethylation is an epigenetic change then you solved the whole issue.. Through which of the following mechanisms has this abnormal gene expression most likely occurred?
- A Amplification
- **B Epigenetic alteration**
- C Growth factor binding
- D Point mutation

- Columnar epithelial cells from the colonic mucosa are studied to identify abnormalities in cell signaling pathways. Abnormal epithelial cells from colonic adenocarcinoma are shown to have a mutation that blocks hydrolysis of GTP-bound active RAS. Normal columnar cells have active RAS protein that undergoes hydrolysis to the inactive GDP-bound form. Which of the following signaling pathways is most likely abnormally stimulated in the carcinoma cells?
- A ADP
- B BCR-ABL
- C Cyclic AMP
- D Cyclin D1
- E MAP kinase

- Columnar epithelial cells from the colonic mucosa are studied to identify abnormalities in cell signaling pathways. Abnormal epithelial cells from colonic adenocarcinoma are shown to have a mutation that blocks hydrolysis of GTP-bound active RAS. Normal columnar cells have active RAS protein that undergoes hydrolysis to the inactive GDP-bound form. Which of the following signaling pathways is most likely abnormally stimulated in the carcinoma cells?
 - A ADP
 - B BCR-ABL
 - C Cyclic AMP
 - D Cyclin D1
 - E MAP kinase
- All what you need to know here is the signaling

- A 50-year-old woman notes a lump in her breast. Her physician's assistant palpates a 2 cm firm mass in her left breast. A fine needle aspiration biopsy is performed, and on microscopic examination a carcinoma is present. Molecular analysis shows HER2 positivity but estrogen receptor negativity in these malignant cells. Through which of the following mechanisms has this abnormal expression most likely occurred?
- A Amplification
- B Epigenetic alteration
- C Growth factor binding
- D Point mutation
- E Reduced miRNA expression

- A 50-year-old woman notes a lump in her breast. Her physician's assistant palpates a 2 cm firm mass in her left breast. A fine needle aspiration biopsy is performed, and on microscopic examination a carcinoma is present. Molecular analysis shows HER2 positivity but estrogen receptor negativity in these malignant cells. Through which of the following mechanisms has this abnormal expression most likely occurred?
- **A Amplification** .. All the information is irrelevant.. They are just asking about how HER 2 is activated, and you should know by now it's through amplification. HER2= EGFR
- B Epigenetic alteration
- C Growth factor binding

- A 66-year-old man has noted darker urine for the past 2 weeks. A urine analysis shows hematuria. Cystoscopy is performed and there is a 3 cm mass in the dome of the bladder. Biopsies of the mass are taken and on microscopic examination show a urothelial carcinoma. Cells of this neoplasm demonstrate a single mutation causing cellular inability to hydrolyze GTP, thus resulting in cellular transformation. Which of the following oncogenes is most likely implicated in this case?
- A ABL
- B ERBB2
- C SIS
- D RAS
- E NMYC

- A 66-year-old man has noted darker urine for the past 2 weeks. A urine analysis shows hematuria. Cystoscopy is performed and there is a 3 cm mass in the dome of the bladder. Biopsies of the mass are taken and on microscopic examination show a urothelial carcinoma. Cells of this neoplasm demonstrate a single mutation causing cellular inability to hydrolyze GTP, thus resulting in cellular transformation. Which of the following oncogenes is most likely implicated in this case?
- A ABL
- B ERBB2
- C SIS
- D RAS **You only need to know that RAS is a G protein and its function is related to GDP/GTP. You should be able to answer the**

- A 52-year-old man has had increasing fatigue for the past 6 months. On physical examination he has a palpable spleen tip. Laboratory studies show a WBC count of 189,000/microliter. The peripheral blood smear shows many mature and immature myeloid cells present. Cytogenetic analysis of cells obtained via bone marrow aspiration reveals a t(9:22) translocation. This translocation leads to formation of a hybrid gene that greatly increases tyrosine kinase activity. Which of the following genes is most likely translocated to cause these findings?
- A p53
- B RB
- C ABL
- D NF-1

- A 52-year-old man has had increasing fatigue for the past 6 months. On physical examination he has a palpable spleen tip. Laboratory studies show a WBC count of 189,000/microliter. The peripheral blood smear shows many mature and immature myeloid cells present. Cytogenetic analysis of cells obtained via bone marrow aspiration reveals a t(9:22) translocation. This translocation leads to formation of a hybrid gene that greatly increases tyrosine kinase activity. Which of the following genes is most likely translocated to cause these findings?
- A p53
- B RB
- C **ABL .. This is very easy, you only need to practice to pick the relevant information in these questions**

