

**The University Of Jordan
Faculty Of Medicine**



General Embryology

DR. AHMED SALMAN

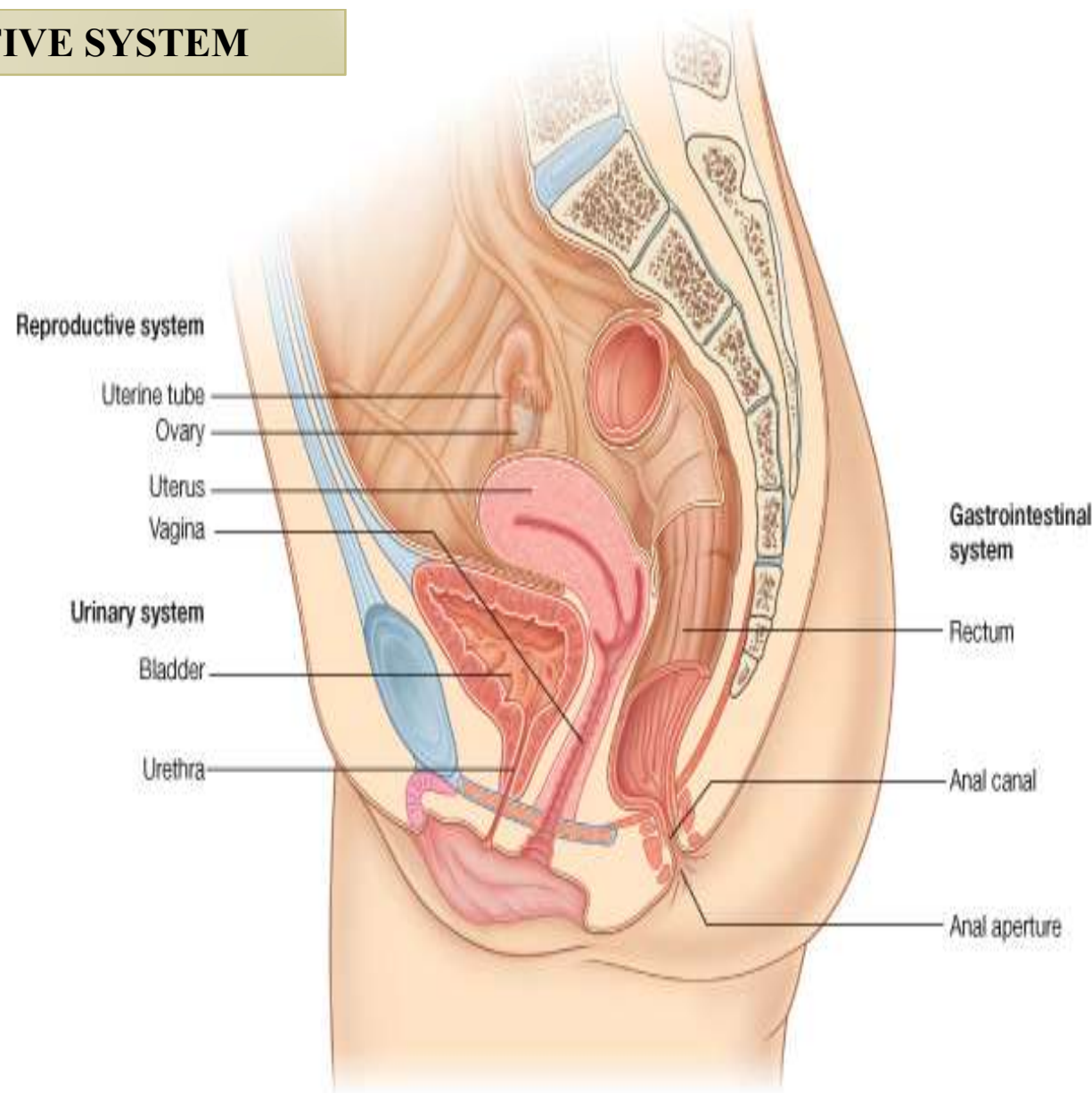
ASSOCIATE PROFESSOR OF ANATOMY AND HISTOLOGY

Female reproductive system

FEMALE REPRODUCTIVE SYSTEM

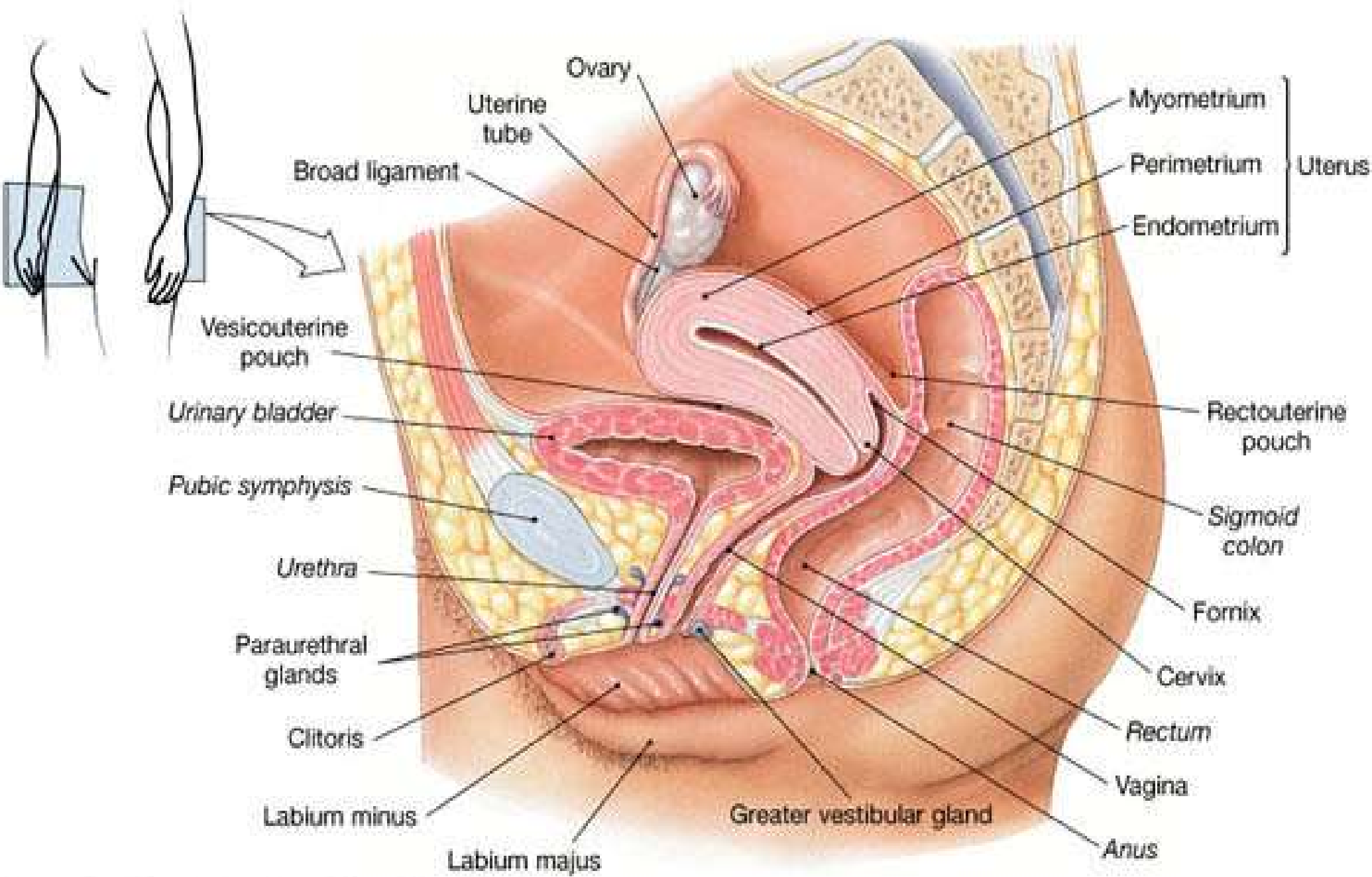
Organs of the female reproductive system

- 1-The ovaries (female gonads)
- 2-The uterine (fallopian) tubes or Oviducts
- 3-The uterus
- 4-The vagina
- 5- External organs, which are collectively called the vulva
- 6-The mammary glands



© Elsevier. Drake et al: Gray's Anatomy for Students - www.studentconsult.com

[Add to My Slides](#) [Go to My Slides](#)



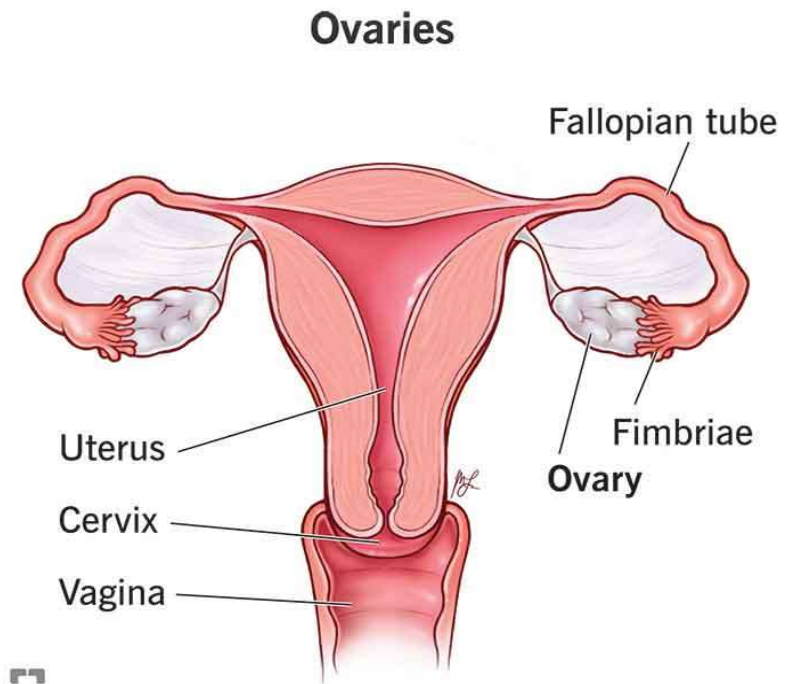
Ovaries

Are paired glands that resemble unshelled almonds in size and shape

Site of the Ovary: In the ovarian fossa in the lateral wall of the pelvis

Function : The ovaries produce

- A. Gametes, secondary oocytes
- B. Female sex hormones including progesterone and estrogens



Uterine tubes

Females have two uterine (fallopian) tubes, that extend laterally from the uterus

Functions : They provide a route for sperm to reach an ovum and transport secondary oocytes and fertilized ova from the ovaries to the uterus.

Parts of the Tube:

From lateral to medial, it has four parts;

1. Infundibulum :

- It is the lateral part of the tube which is closely related to the ovary.
- Its bottom presents the abdominal ostium which have fimbriae which spread over the surface of the ovary.
- During ovulation, the fimbriae trap the oocyte into the uterine tube.

2. Ampulla :

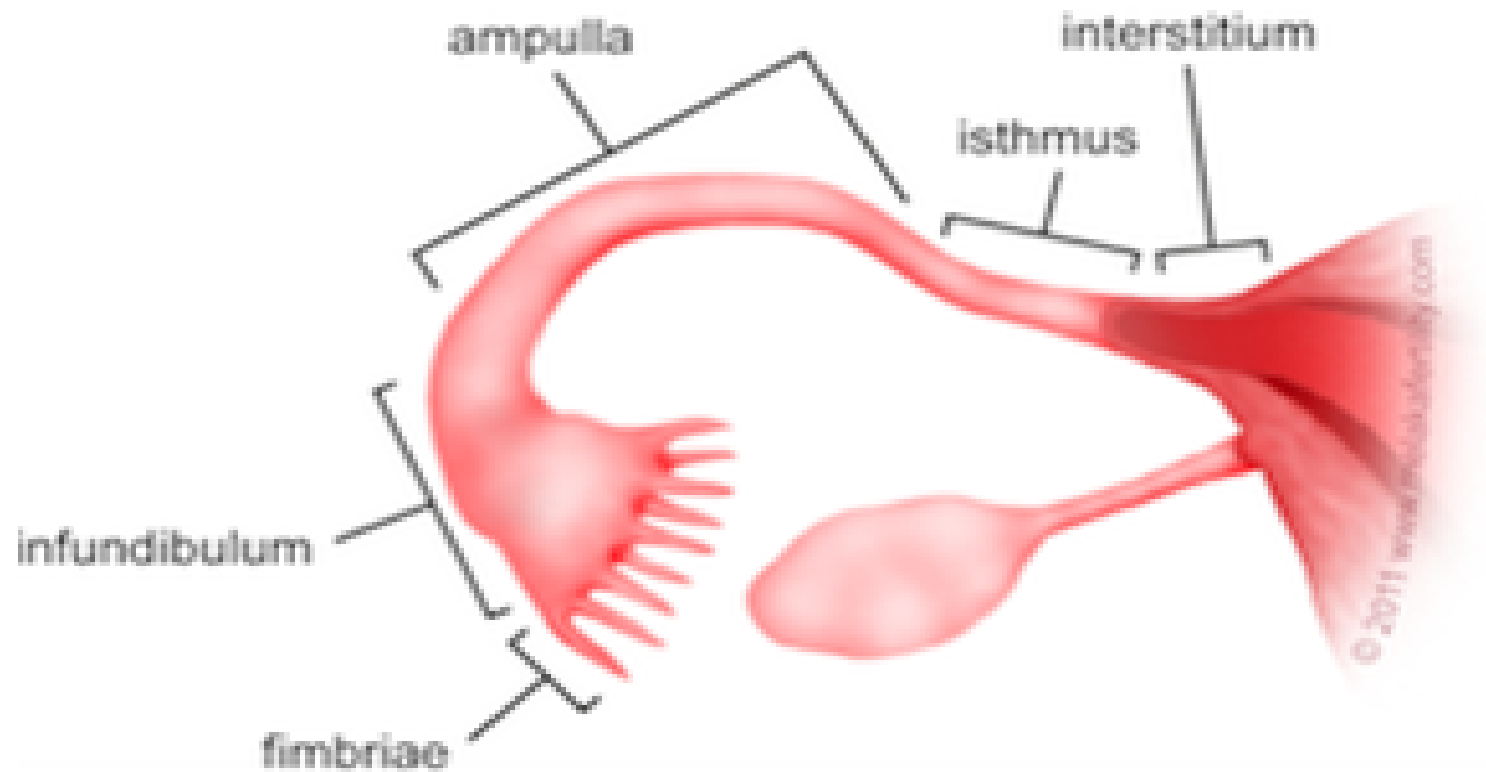
- ✓ It is the **widest** and longest part of the tube
- ✓ It is the site of fertilization.

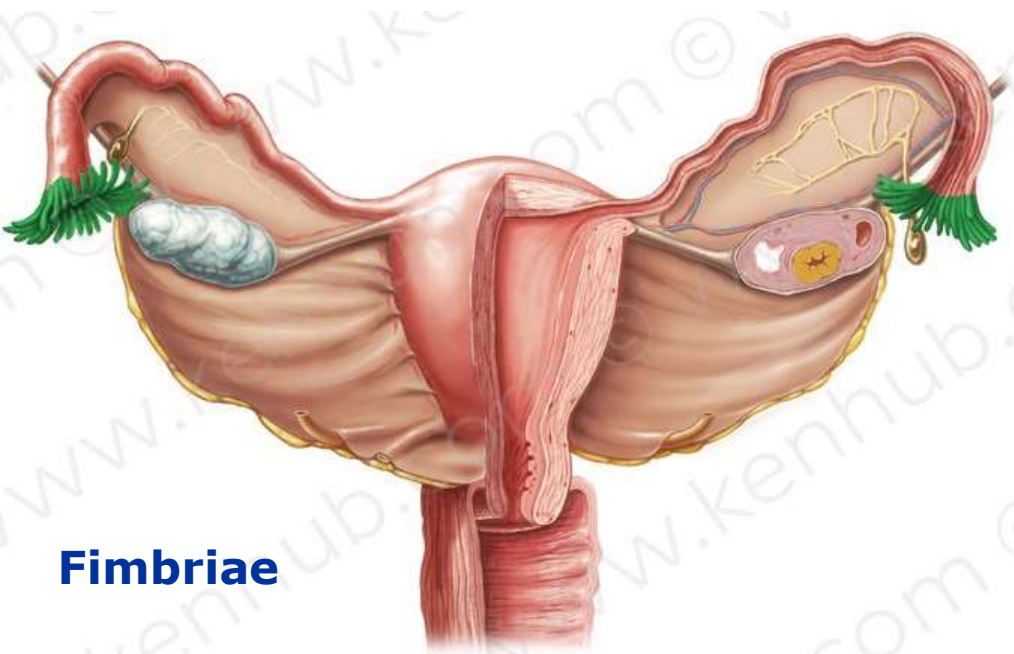
3. Isthmus:

It is **narrow**

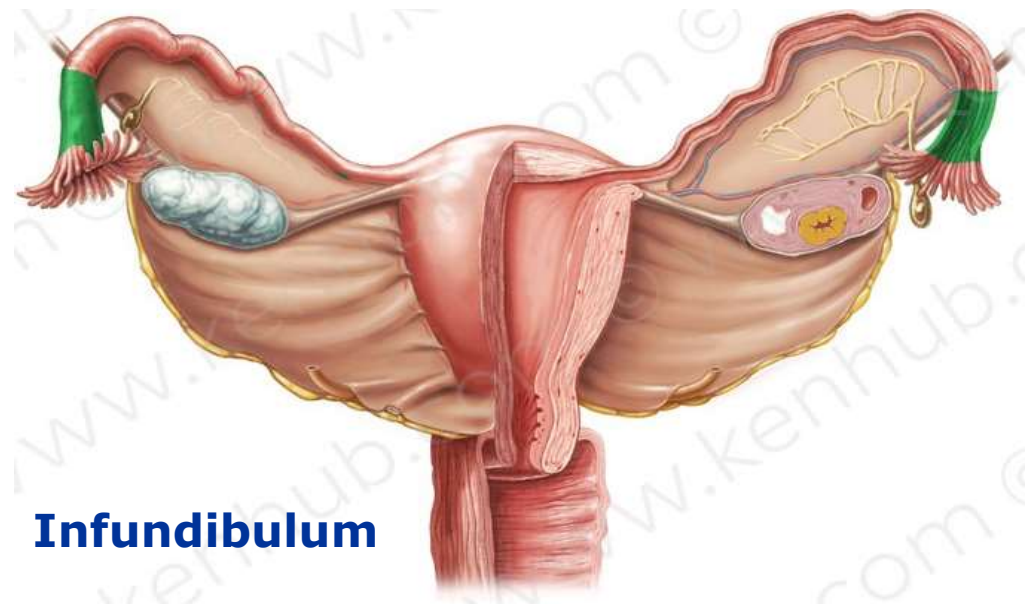
4. Uterine (intramural) part :

- It is the **short and narrowest** segment
- It opens in the uterine cavity through the uterine ostium

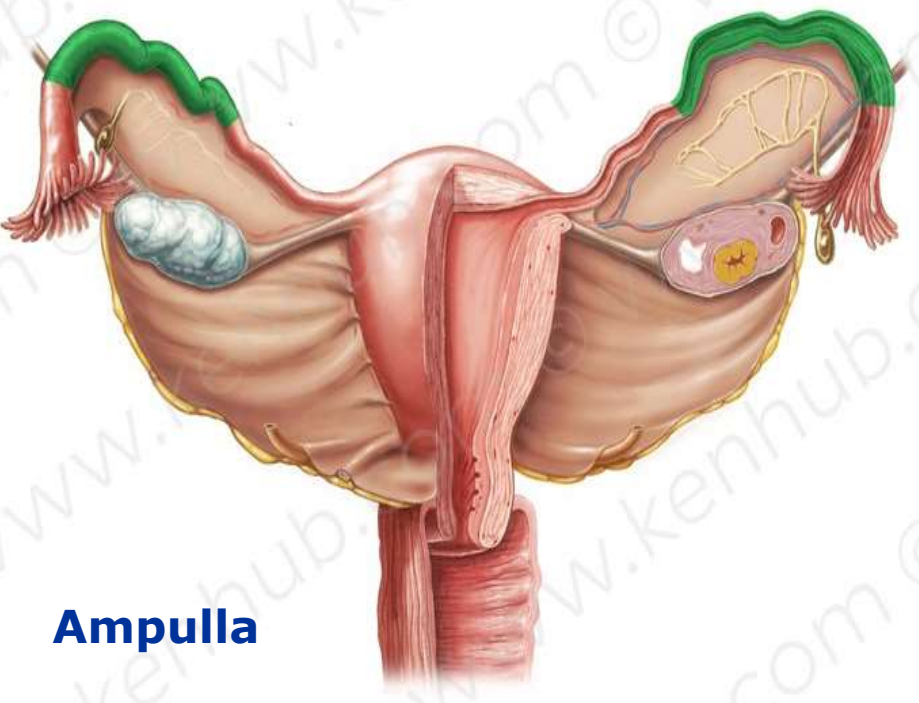




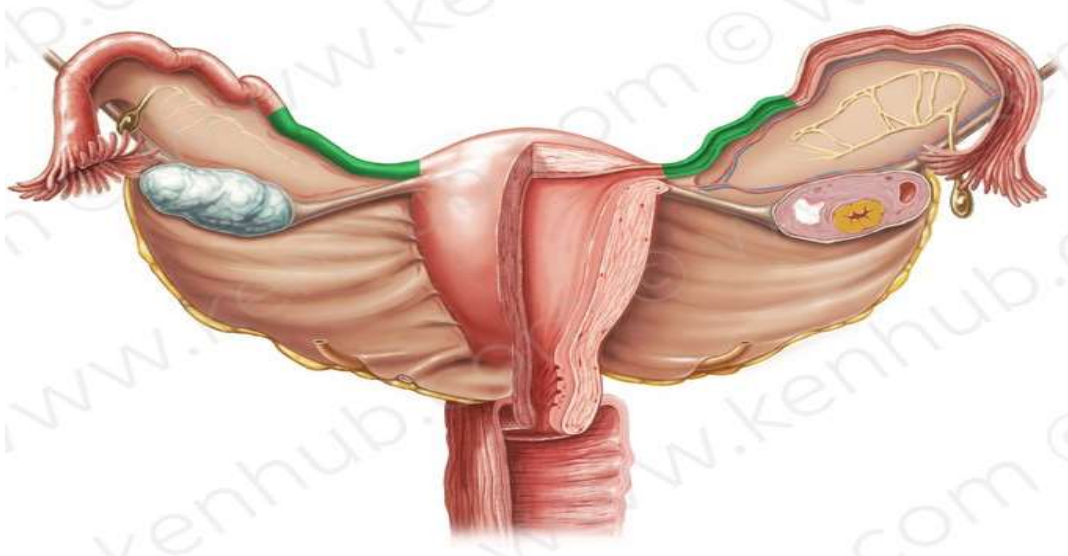
Fimbriae



Infundibulum



Ampulla

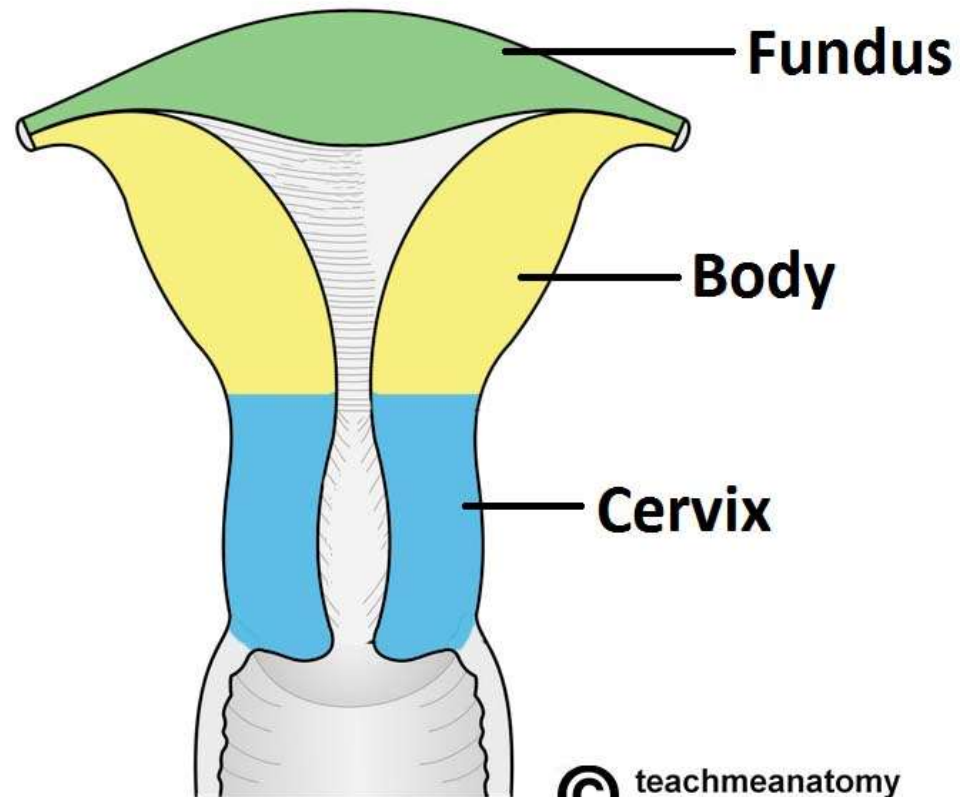


Isthmus

UTERUS

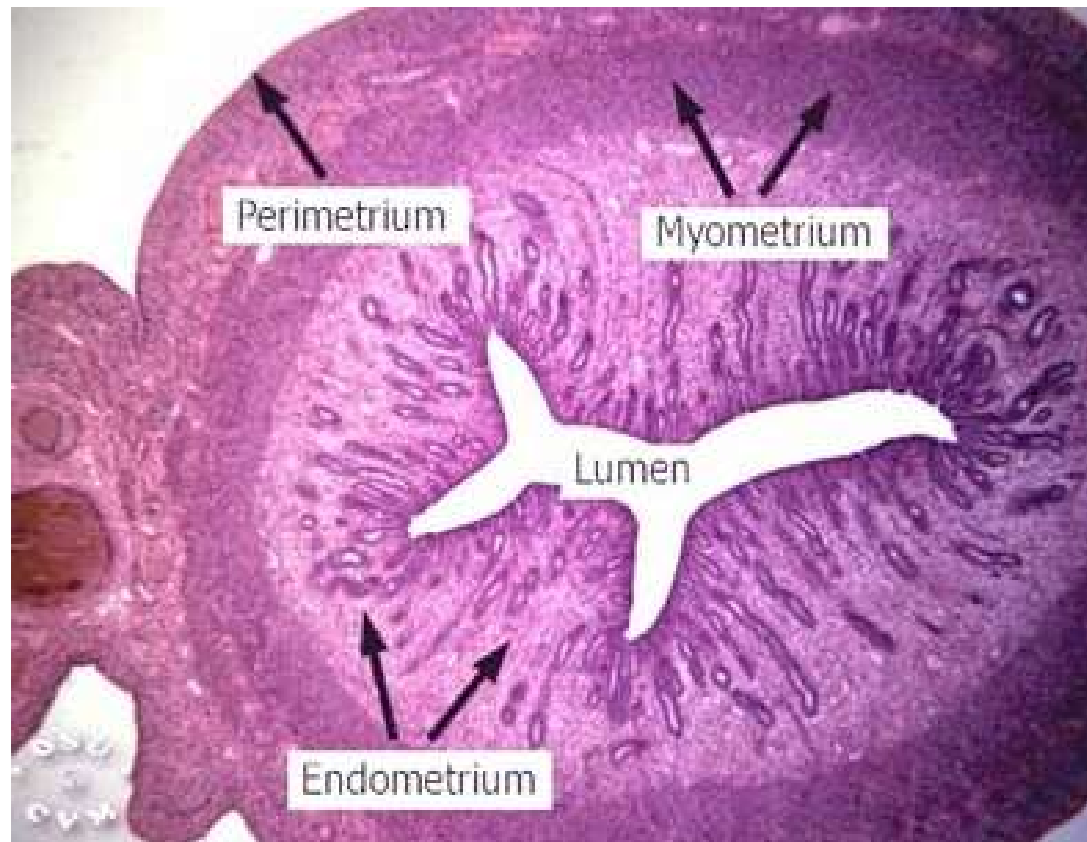
The uterus is a hollow thick-walled, pear-shaped muscular organ situated in the pelvis

It composed of fundus ,body and cervix.



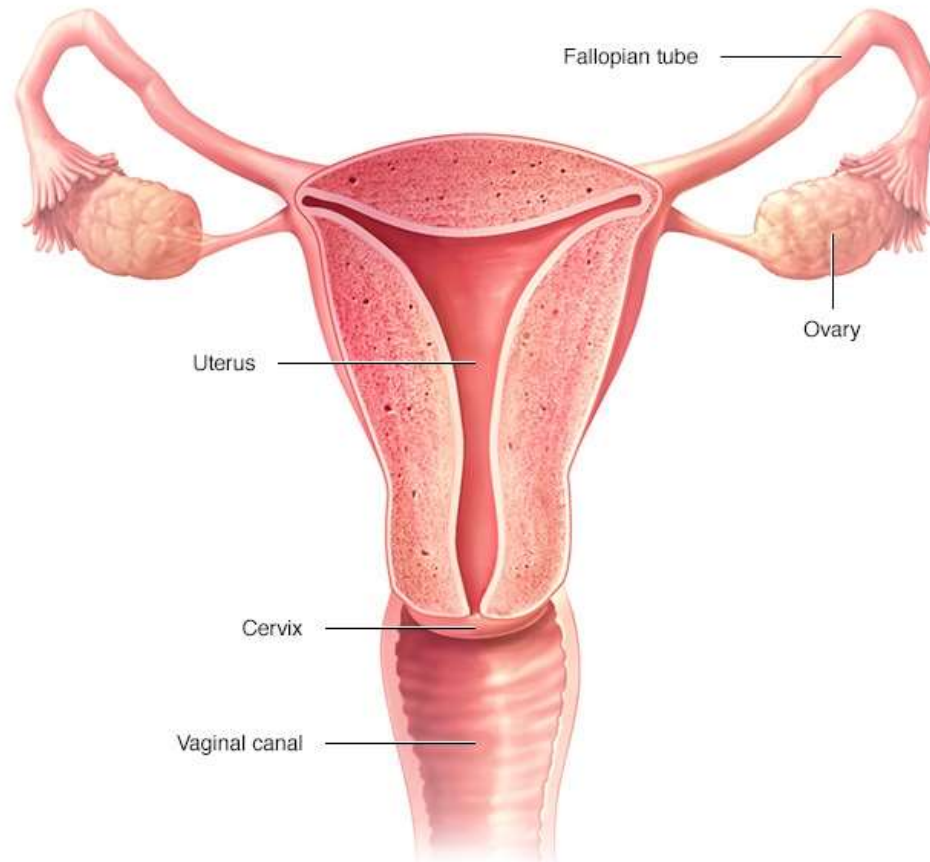
Wall of **body and fundus** has 3 layers

- The lining mucosa is called Endometrium
- The muscular layer called Myometrium
- The external layer Perimetrium



Vagina

- ❑ It is a fibromuscular tube
- ❑ It extends from the uterus down to the vestibule



Male Genital system

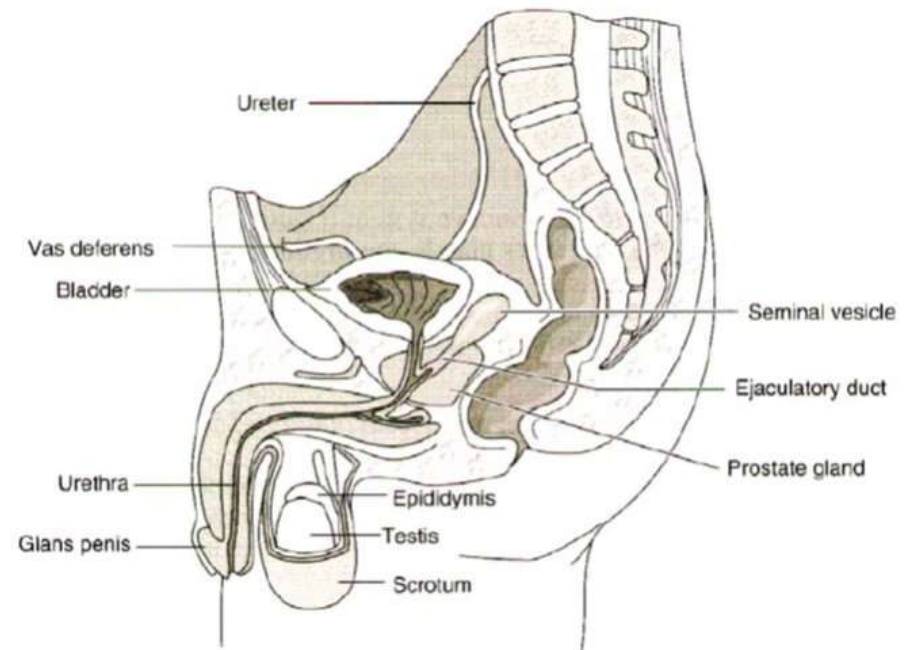
Components of the male reproductive system

Primary sex organ:

- Paired testis

Secondary sex organs:

- **Genital ducts** (Epididymis ,Vas Deference and Ejaculatory duct)
- **Accessory glands** (the paired seminal vesicles, the single prostate gland and two bulbourethral glands)
- The penis



Male reproductive system

Primary sex organ

Testis

Function :

1. Produce Spermatozoa
2. Synthesis of male sex hormone

Accessory Glands

Two Seminal Vesicles
One Prostate
Two Bulbourethral

Manufacture and secrete the seminal fluid

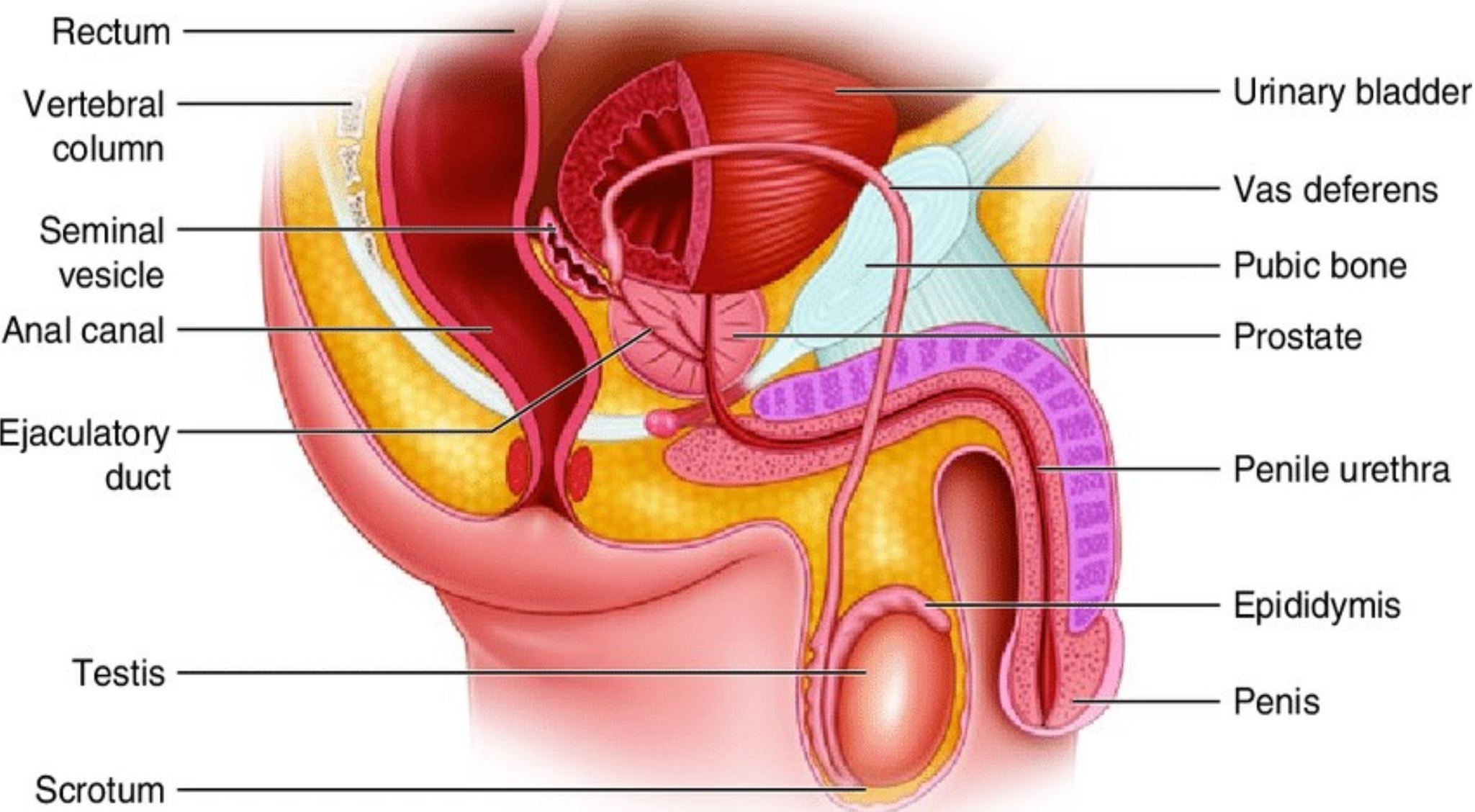
Accessory Ducts

Epididymis
Vas Deference
Ejaculatory duct

Passage of sperm and seminal fluid

Copulatory Organ

Penis



Rectum

Vertebral
column

Seminal
vesicle

Anal canal

Ejaculatory
duct

Testis

Scrotum

Urinary bladder

Vas deferens

Pubic bone

Prostate

Penile urethra

Epididymis

Penis

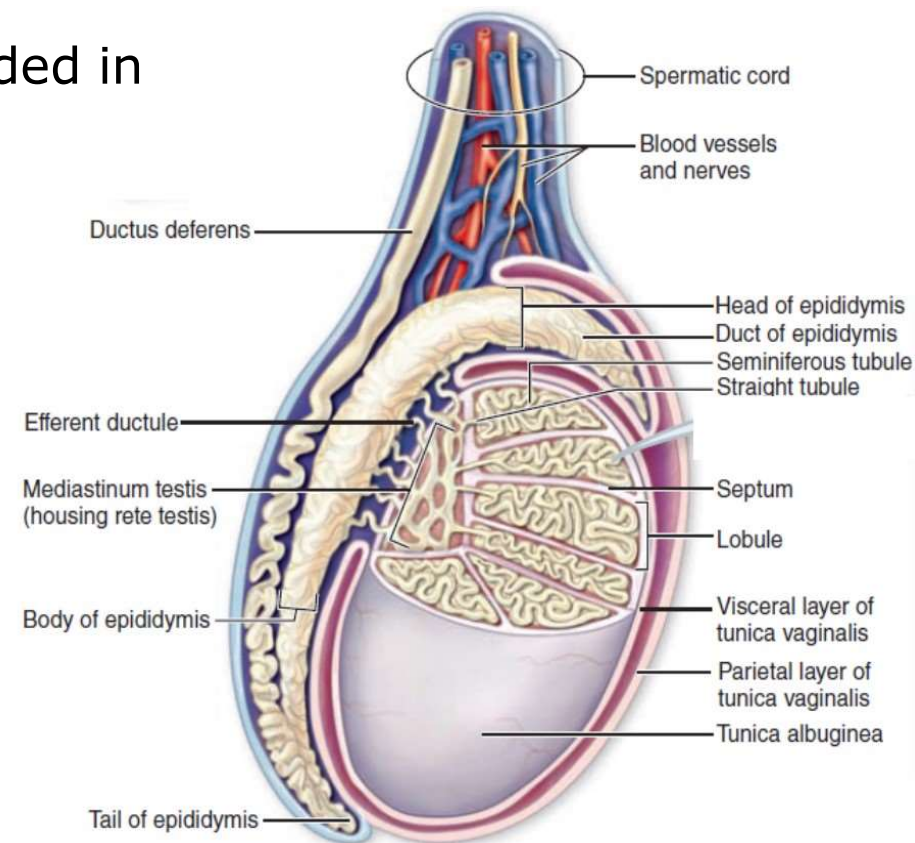
Testis

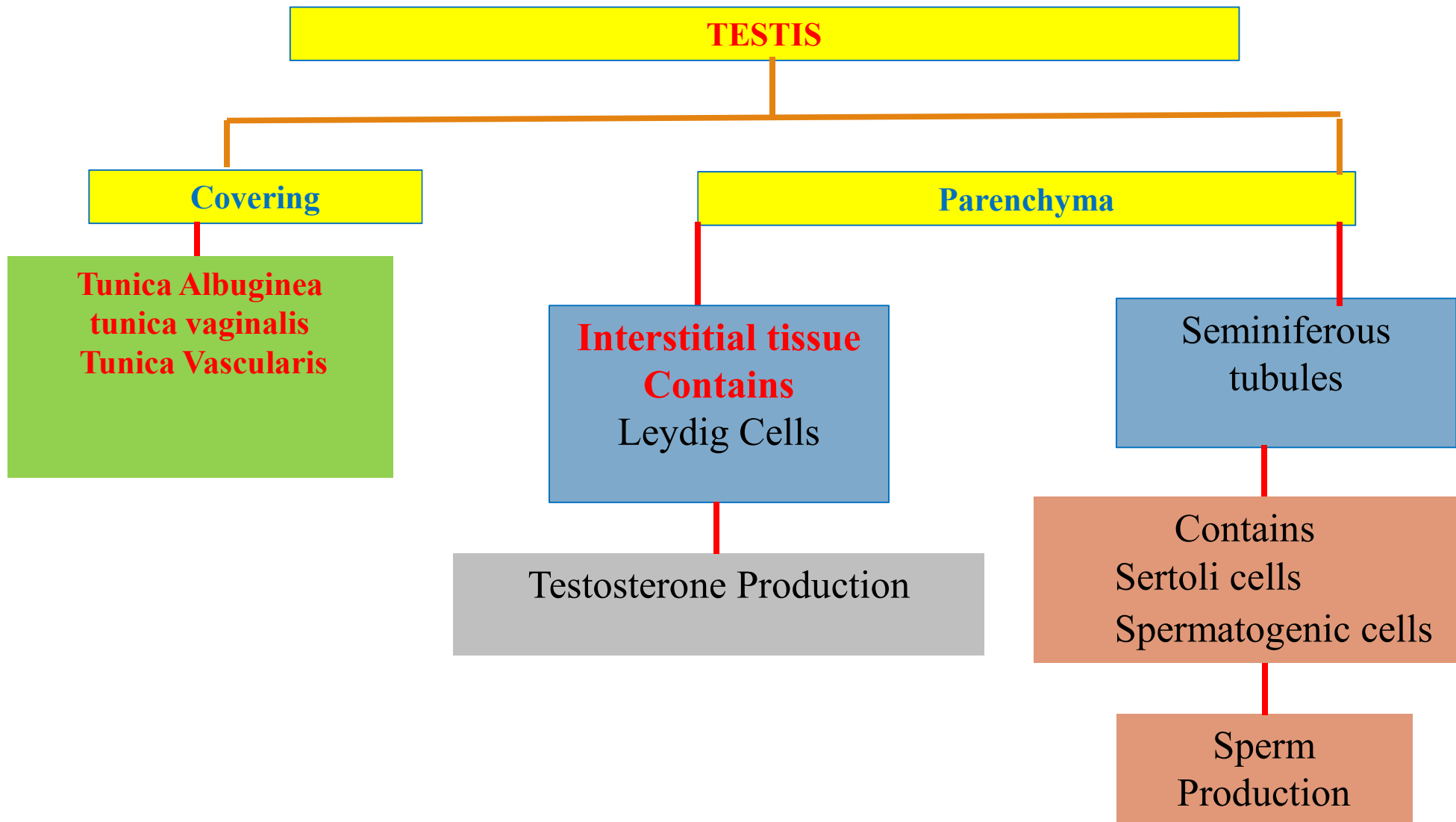
Testis is the male primary sex organ, suspended in the scrotum

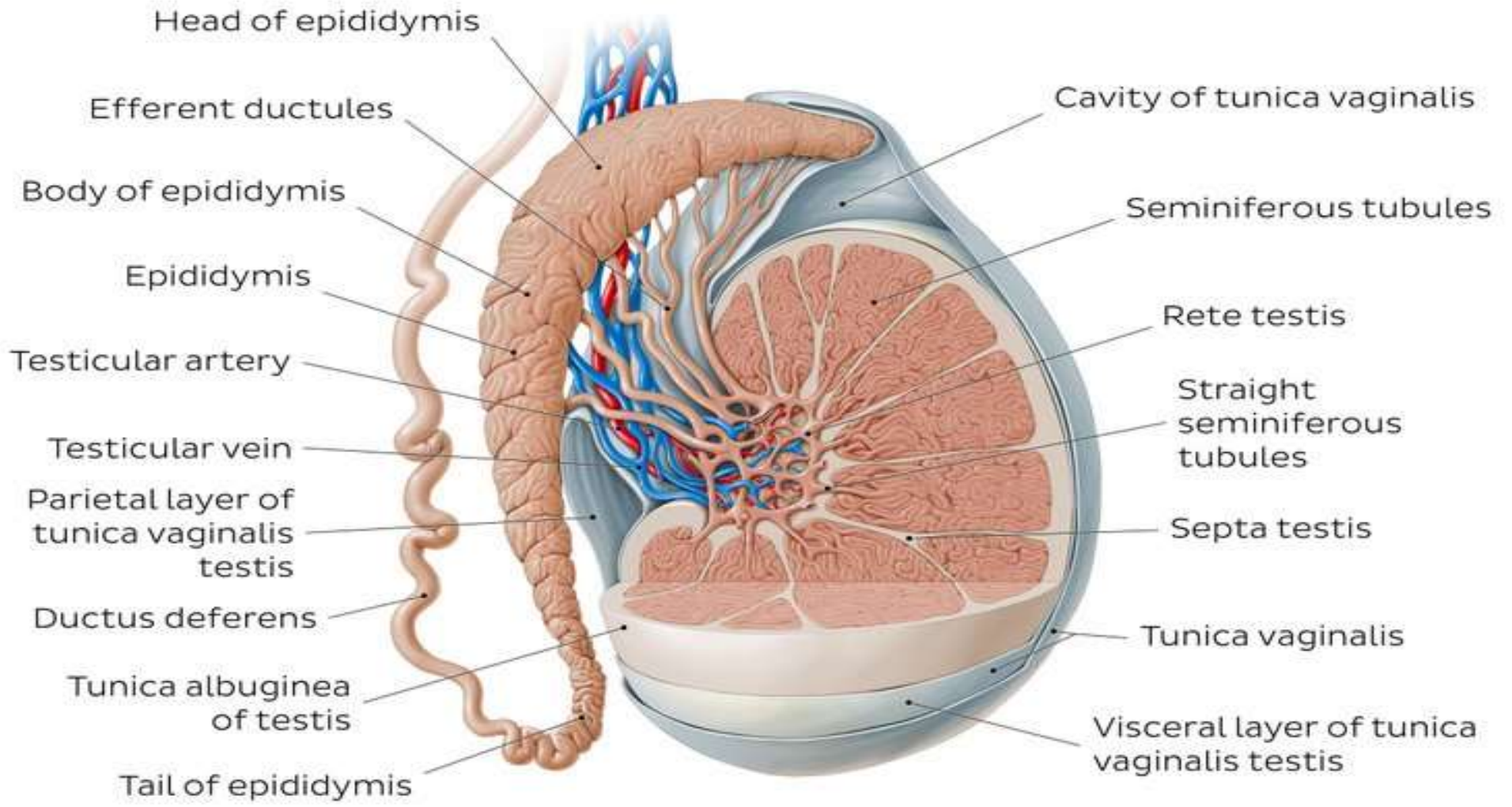
It produce

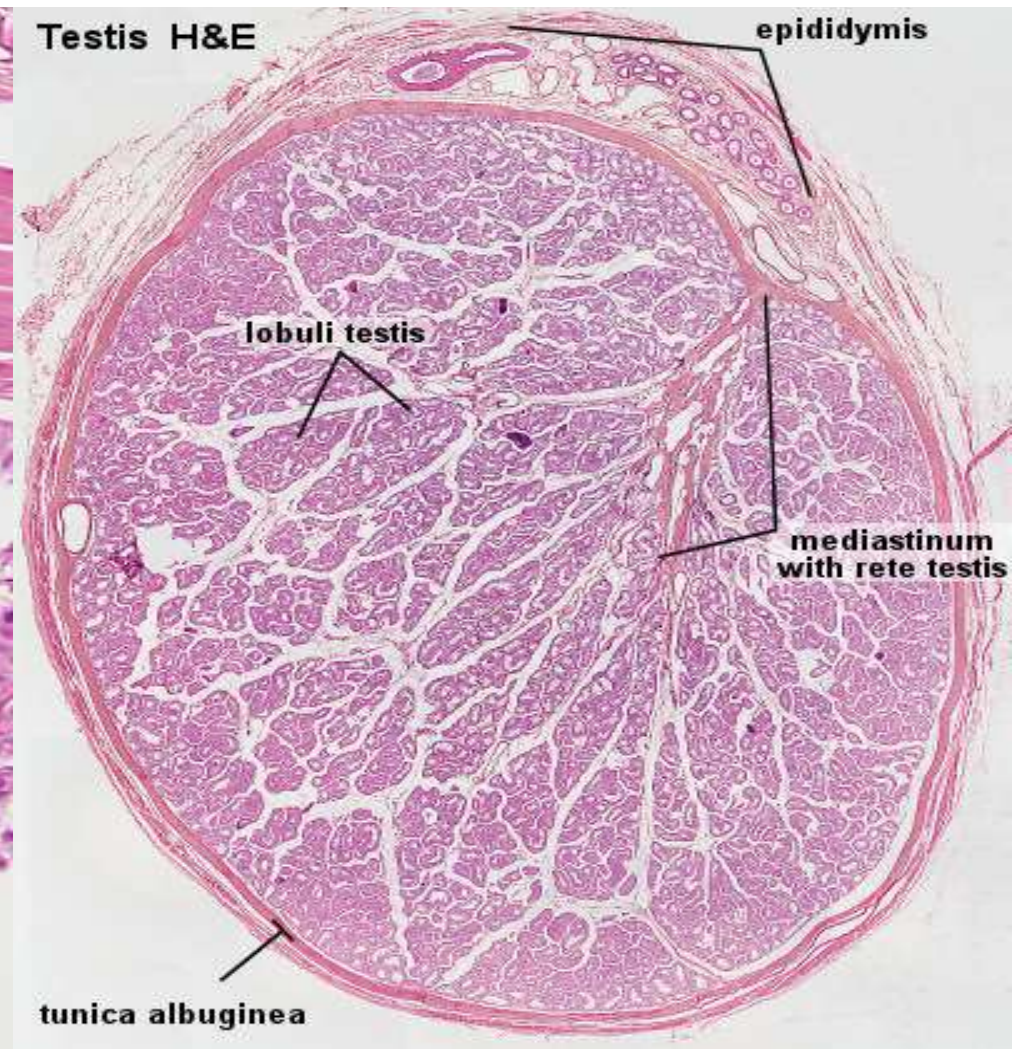
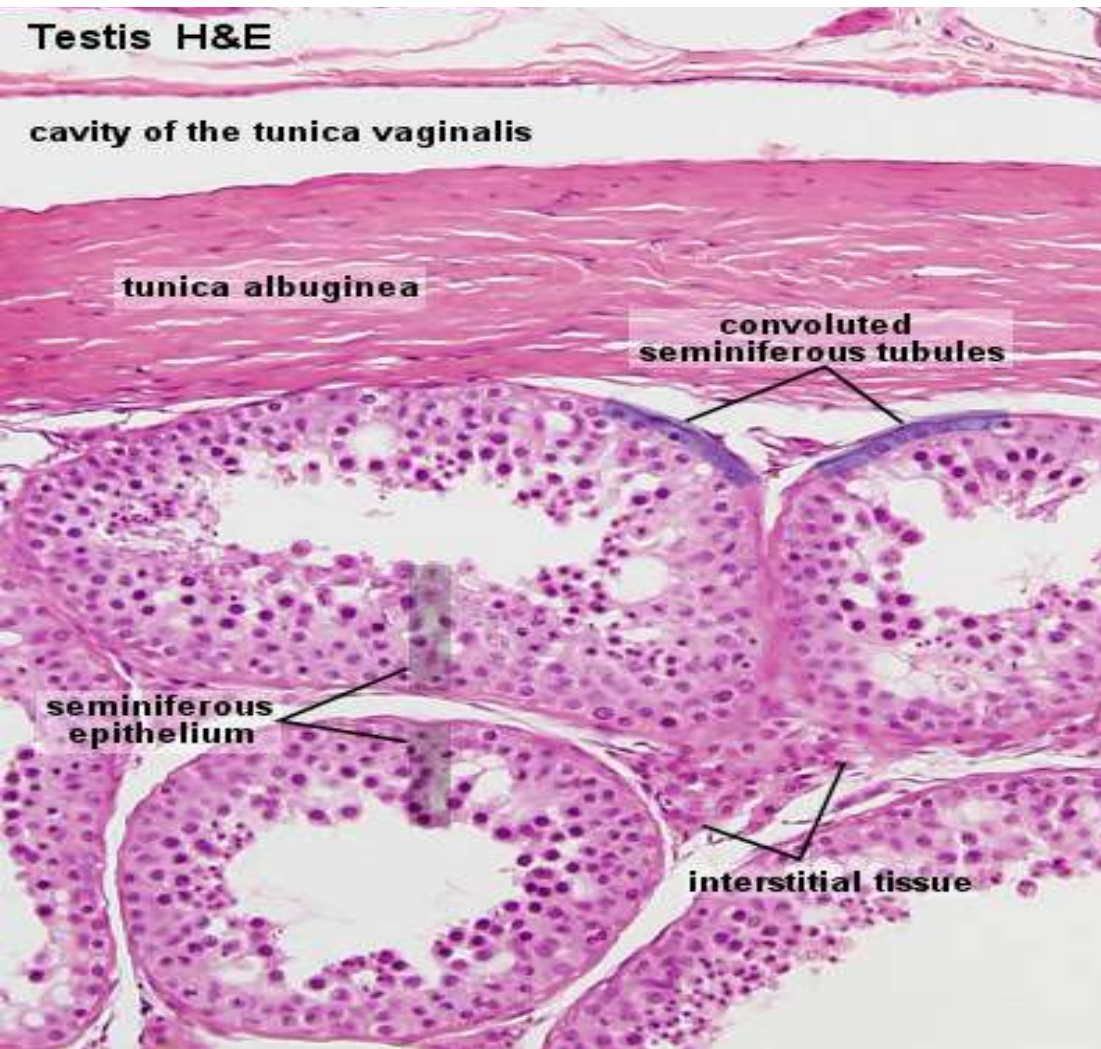
1- Gametes (sperms)

2- Male sex hormone (testosterone)



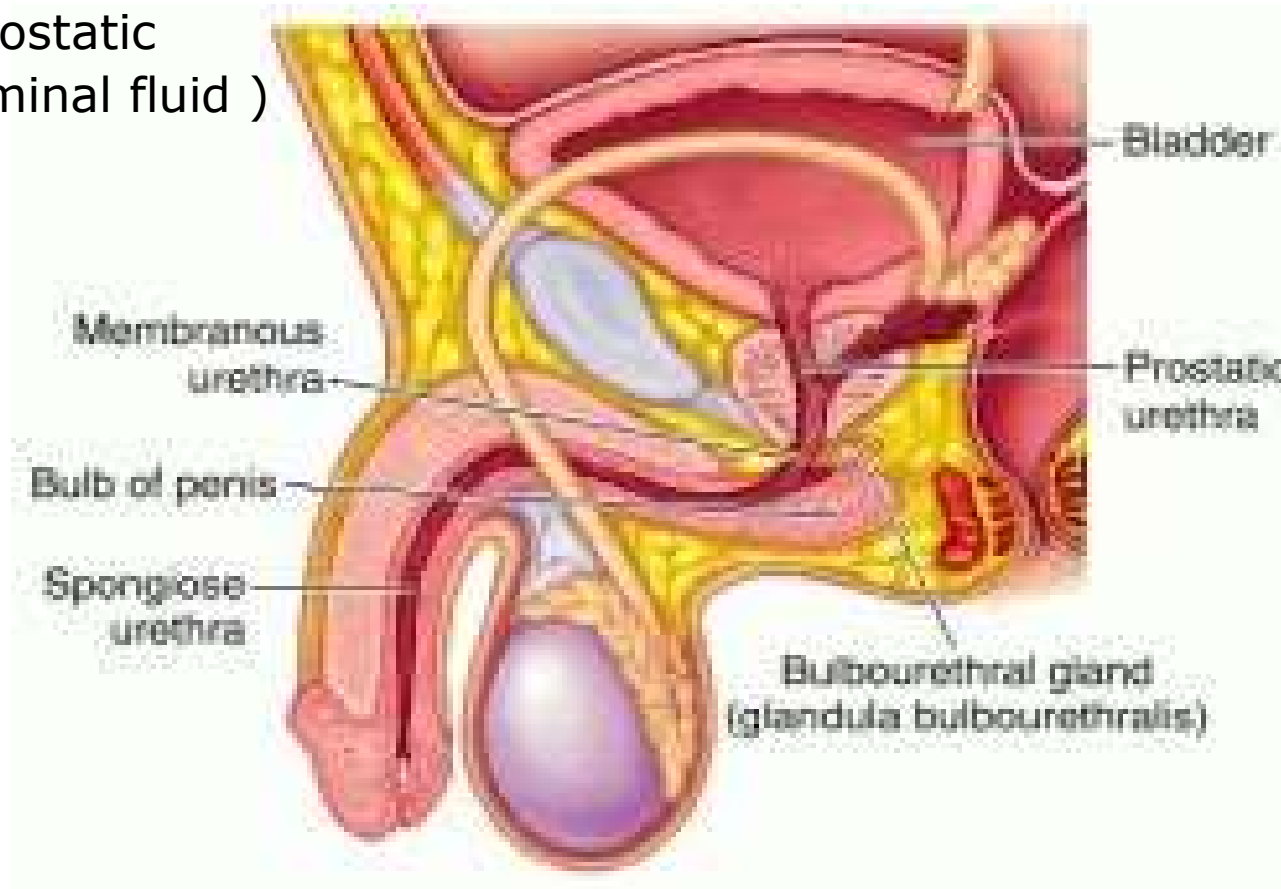






Male Genital Organs

1. **Scrotum** (protection and suitable temperature)
 2. **Testis** (production of sperms and testosterone)
 3. **Epididymis** (transport and maturation of sperm)
 4. **Vas deference** (transport of sperm)
 5. **Seminal vesicles** (produces an alkaline secretion rich in fructose and mucus)
 6. **Ejaculatory ducts**
 7. **Prostate gland** (Secretes prostatic fluid which compose 70% of seminal fluid)
1. **Penis**



A close-up photograph of a baby's face, looking upwards with its mouth slightly open. The baby's skin is a warm, reddish-pink color. The background is a soft, out-of-focus light. The text "THANK YOU" is overlaid in a large, white, serif font across the upper part of the image.

THANK YOU